

兔抗 CHST11 多克隆抗体

中文名称：兔抗 CHST11 多克隆抗体

英文名称：Anti-CHST11 rabbit polyclonal antibody

别名：carbohydrate sulfotransferase 11; C4ST; C4ST1; C4ST-1; HSA269537

相关类别：一抗

储存：冷冻（-20℃）

宿主：Rabbit

抗原：CHST11

反应种属：Human, Mouse, Rat

标记物：Unconjugate

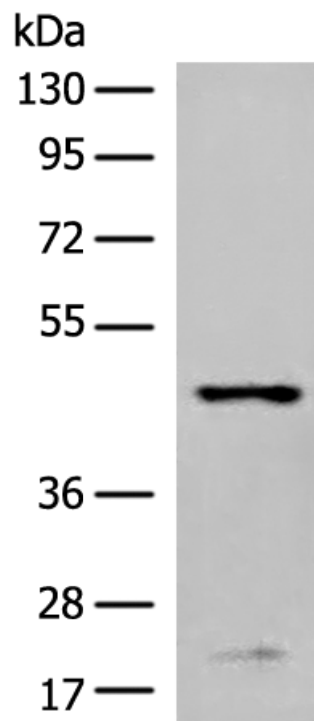
克隆类型：rabbit polyclonal

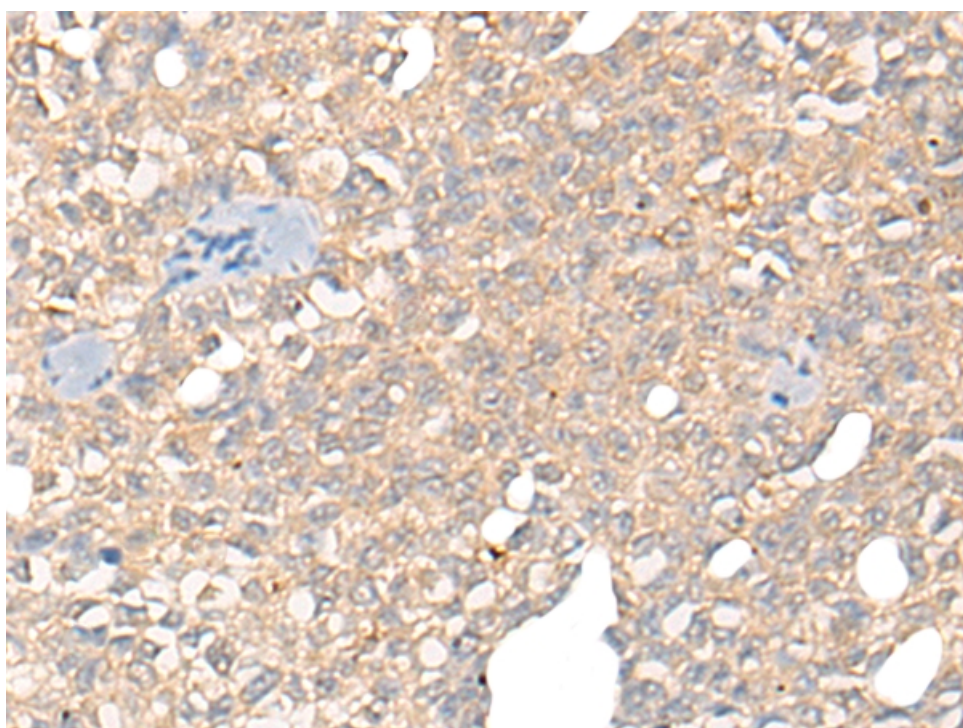
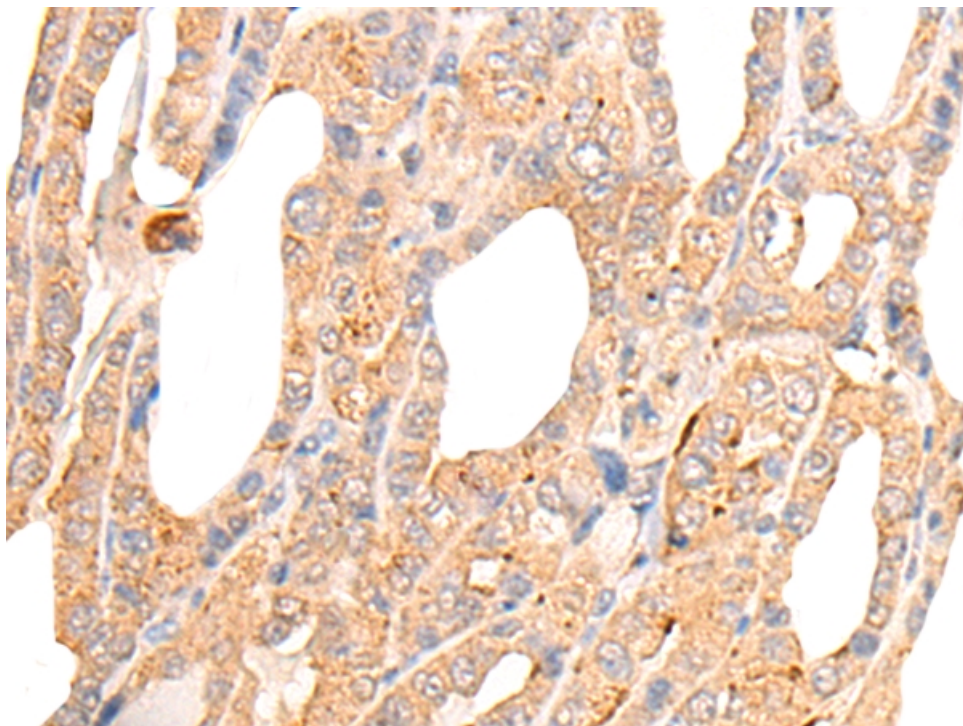
技术规格

Background:

The protein encoded by this gene belongs to the sulfotransferase 2 family. It is localized to the golgi membrane, and catalyzes the transfer of sulfate to position 4 of the N-acetylgalactosamine (GalNAc) residue of chondroitin. Chondroitin sulfate constitutes the predominant proteoglycan present in cartilage, and is distributed on the surfaces of many cells and extracellular matrices. A chromosomal translocation involving this gene and IgH, t(12;14)(q23;q32), has been reported in a patient with B-cell chronic lymphocytic leukemia. Alternatively spliced transcript variants encoding different isoforms have been found for this gene.

	e.
Applications:	ELISA, WB, IHC
Name of antibody:	CHST11
Immunogen:	Fusion protein of human CHST11
Full name:	carbohydrate sulfotransferase 11
Synonyms:	C4ST; C4ST1; C4ST-1; HSA269537
SwissProt:	Q9NPF2
ELISA Recommended dilution:	5000-10000
IHC positive control:	Human thyroid cancer and Human ovarian cancer
IHC Recommend dilution:	25-100
WB Predicted band size:	42 kDa
WB Positive control:	K562 cell lysate
WB Recommended dilution:	200-1000





mlbio 梅联生物
Good elisakit producers