

兔抗 CIR1 多克隆抗体

中文名称：兔抗 CIR1 多克隆抗体

英文名称：Anti-CIR1 rabbit polyclonal antibody

别名：corepressor interacting with RBPJ, 1; CIR

相关类别：一抗

储存：冷冻（-20℃）

宿主：Rabbit

抗原：CIR1

反应种属：Human

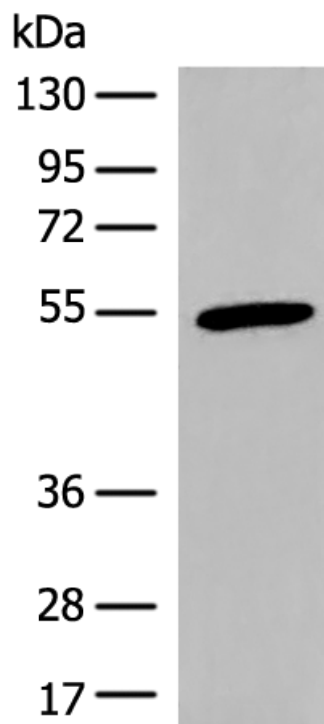
标记物：Unconjugate

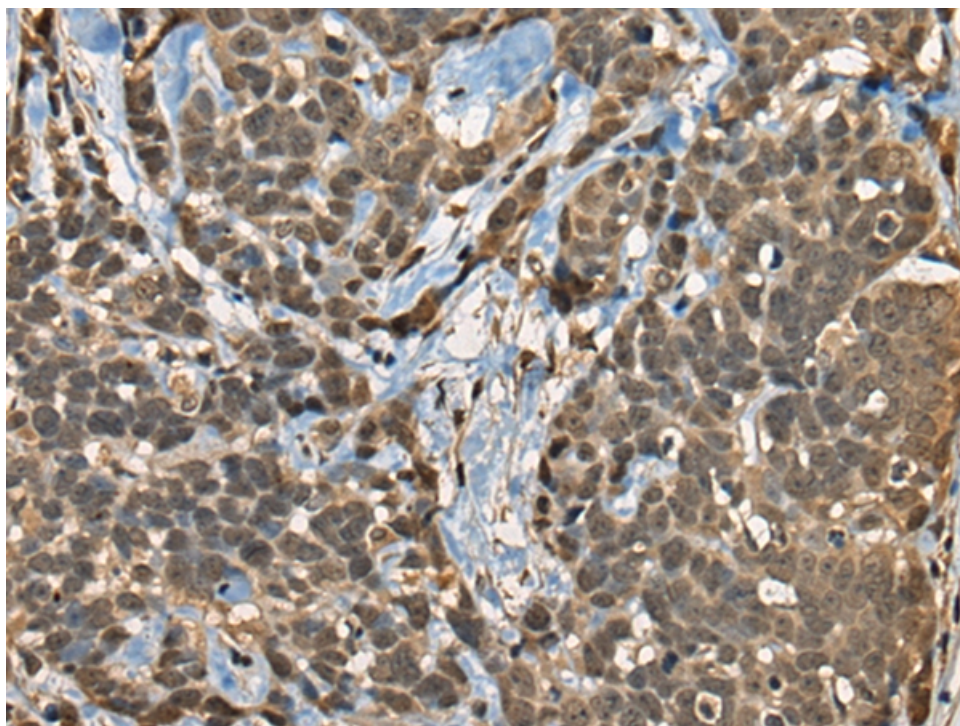
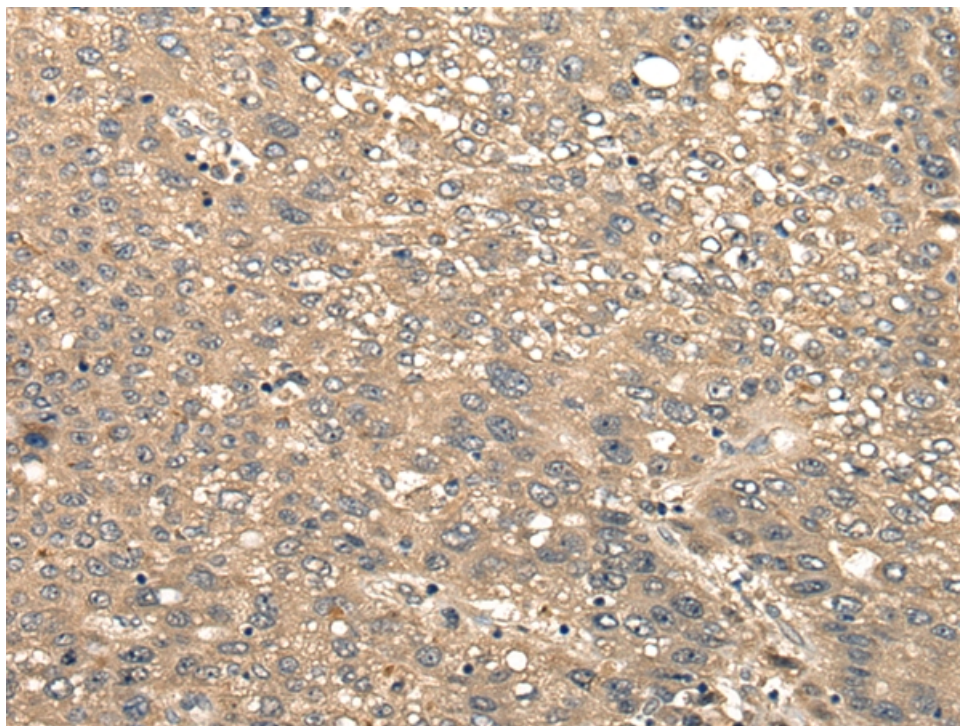
克隆类型：rabbit polyclonal

技术规格

Background:	May modulate splice site selection during alternative splicing of pre-mRNAs (By similarity). Regulates transcription and acts as corepressor for RBPJ. Recruits RBPJ to the Sin3-histone deacetylase complex (HDAC). Required for RBPJ-mediated repression of transcription.
Applications:	ELISA, WB, IHC
Name of antibody:	CIR1
Immunogen:	Synthetic peptide of human CIR1
Full name:	corepressor interacting with RBPJ, 1
Synonyms:	CIR
SwissProt:	Q86X95

ELISA Recommended dilution:	5000-10000
IHC positive control:	Human liver cancer; Human thyroid cancer
IHC Recommend dilution:	30-150
WB Predicted band size:	52 kDa
WB Positive control:	Human heart tissue lysate
WB Recommended dilution:	500-2000





mlbio 梅联生物
Good elisakit producers