

兔抗 CLIC1 多克隆抗体

中文名称：兔抗 CLIC1 多克隆抗体

英文名称：Anti-CLIC1 rabbit polyclonal antibody

别名：G6; NCC27

相关类别：一抗

储存：冷冻（-20℃）

宿主：Rabbit

抗原：CLIC1

反应种属：Human, Mouse, Rat

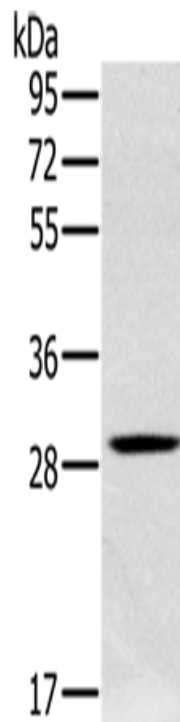
标记物：Unconjugate

克隆类型：rabbit polyclonal

技术规格

Background:	Chloride channels are a diverse group of proteins that regulate fundamental cellular processes including stabilization of cell membrane potential, transepithelial transport, maintenance of intracellular pH, and regulation of cell volume. Chloride intracellular channel 1 is a member of the p64 family; the protein localizes principally to the cell nucleus and exhibits both nuclear and plasma membrane chloride ion channel activity.
Applications:	ELISA, WB, IHC
Name of antibody:	CLIC1

Immunogen:	Fusion protein of human CLIC1
Full name:	chloride intracellular channel 1
Synonyms :	G6; NCC27
SwissProt:	O00299
ELISA Recommended dilution:	1000-2000
IHC positive control:	Human tonsil and Human breast cancer
IHC Recommend dilution:	50-200
WB Predicted band size:	27 kDa
WB Positive control:	Human testis tissue
WB Recommended dilution:	200-1000



mlbio 梅联生物
Good elisakit producers

