

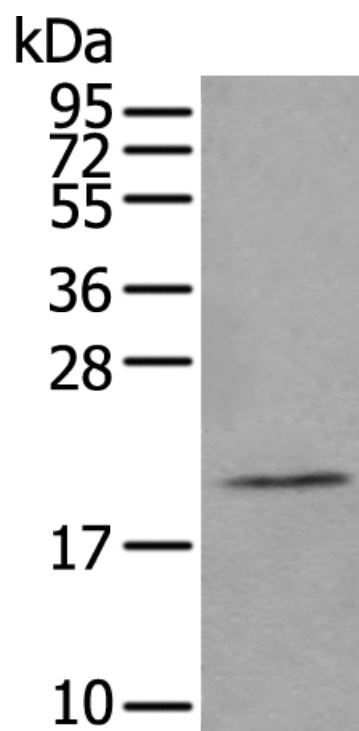
兔抗 ARL8A 多克隆抗体

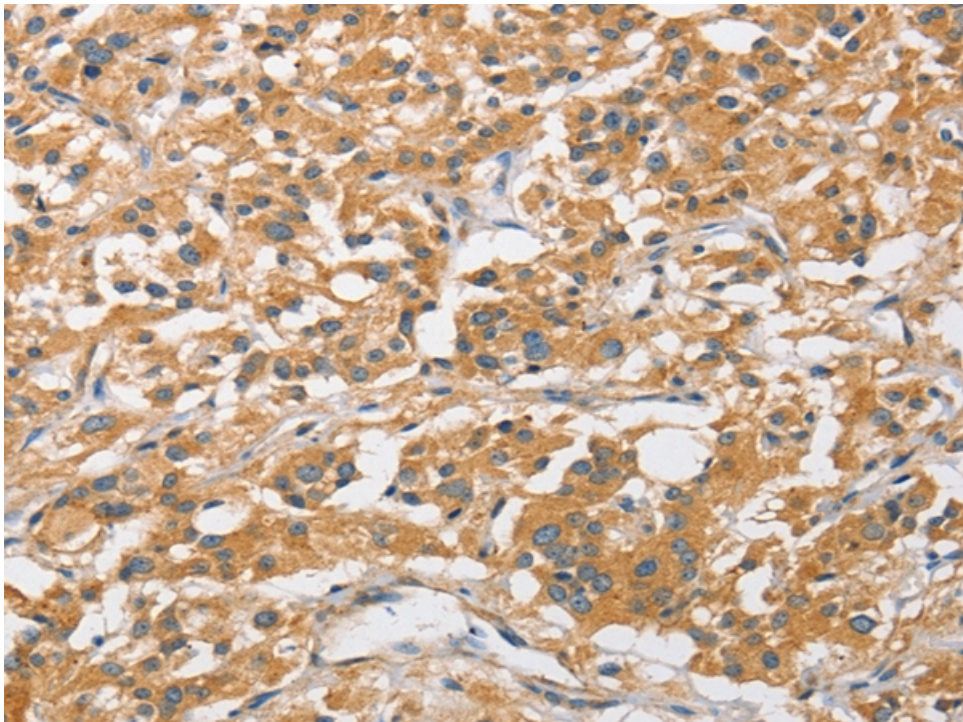
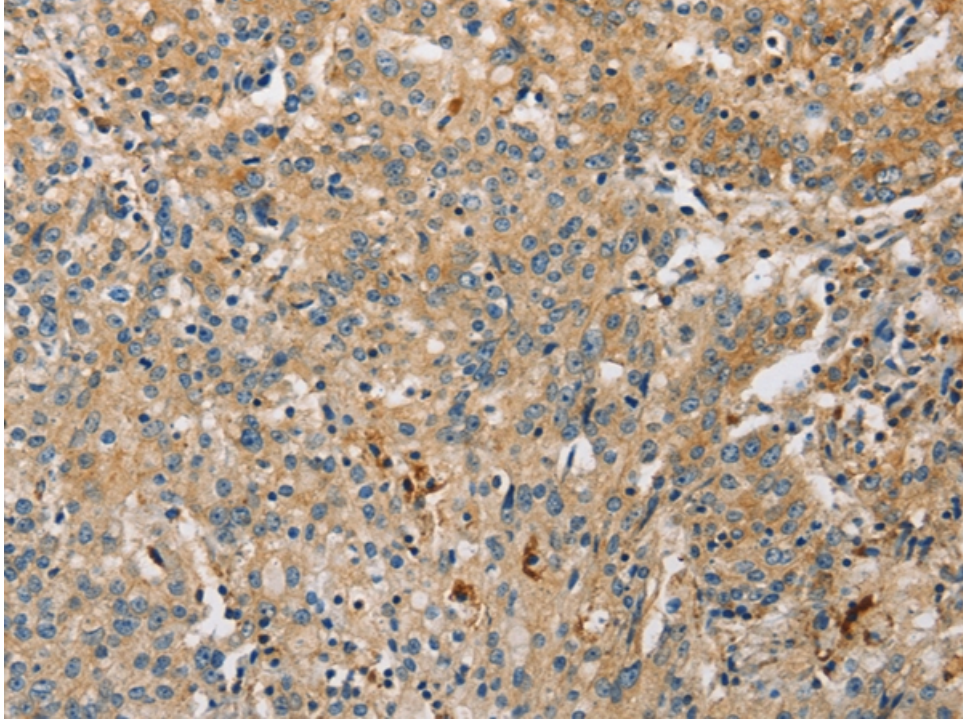
- 中文名称： 兔抗 ARL8A 多克隆抗体
- 英文名称： Anti-ARL8A rabbit polyclonal antibody
- 别名： GIE2; ARL10B
- 相关类别： 一抗
- 抗原： ARL8A
- 储存： 冷冻（-20℃）
- 宿主： Rabbit
- 反应种属： Human, Mouse
- 标记物： Unconjugate
- 克隆类型： rabbit polyclonal

技术规格

Background:	May play a role in lysosomes motility. Alternatively, may play a role in chromosome segregation.
Applications:	ELISA, WB, IHC
Name of antibody:	ARL8A
Immunogen:	Full length fusion protein
Full name:	ADP ribosylation factor like GTPase 8A
Synonyms :	GIE2; ARL10B
SwissProt:	Q96BM9
ELISA Recommended dilution:	2000-5000
IHC positive control:	Human thyroid cancer and human gastric cancer
IHC Recommend dilution:	25-100

WB Predicted band size:	21 kDa
WB Positive control:	Human bladder transitional cell carcinoma grade 2-3 tissue lysate
WB Recommended dilution:	200-1000





mlbio 梅联生物
Good elisakit producers