

## 兔抗 ATF6B 多克隆抗体

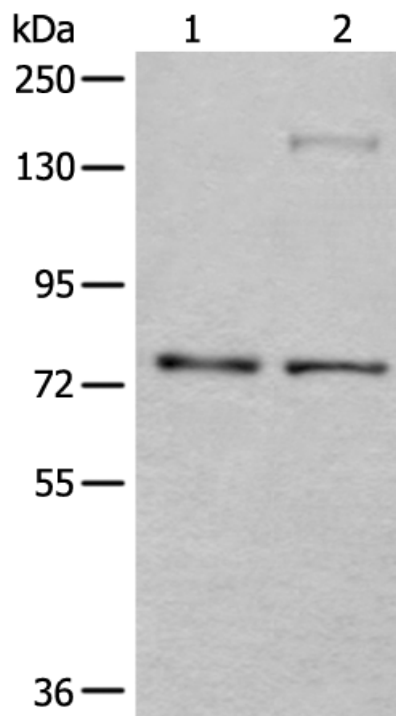
- 中文名称： 兔抗 ATF6B 多克隆抗体
- 英文名称： Anti-ATF6B rabbit polyclonal antibody
- 别名： G13; CREBL1; CREB-RP
- 储存： 冷冻 (-20℃)
- 抗原： ATF6B
- 宿主： Rabbit
- 相关类别： 一抗
- 反应种属： Human, Mouse
- 标记物： Unconjugate
- 克隆类型： rabbit polyclonal

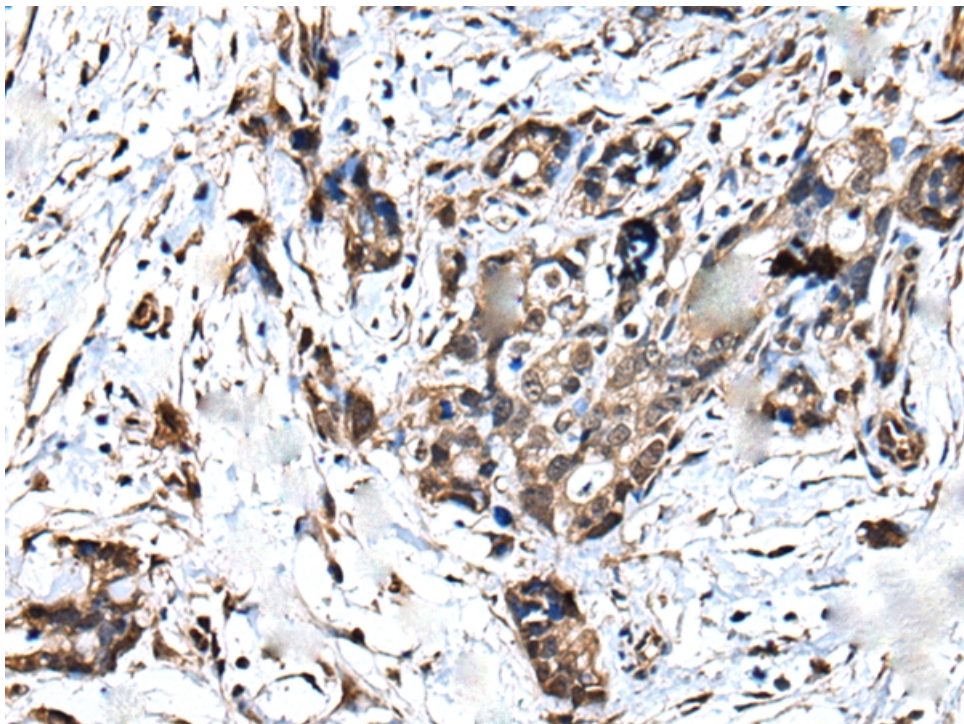
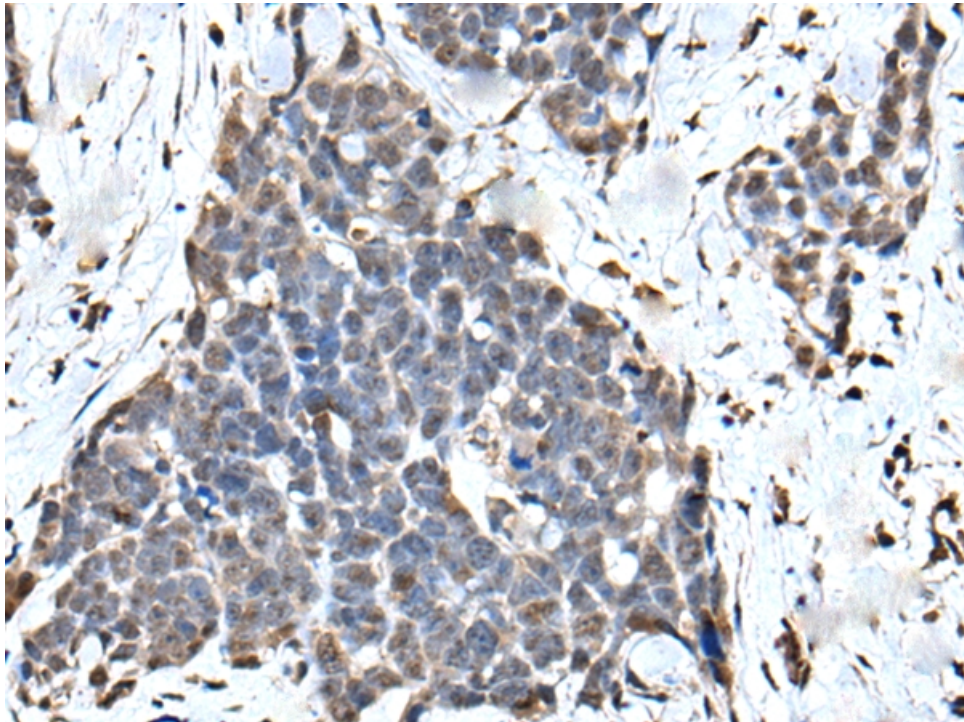
### 技术规格

**Background:**

The protein encoded by this gene is a transcription factor in the unfolded protein response (UPR) pathway during ER stress. Either as a homodimer or as a heterodimer with ATF6-alpha, the encoded protein binds to the ER stress response element, interacting with nuclear transcription factor Y to activate UPR target genes. The protein is normally found in the membrane of the endoplasmic reticulum; however, under ER stress, the N-terminal cytoplasmic domain is cleaved from the rest of the protein and translocates to the nucleus. Two transcript variants encoding different isoforms have been found for this gene.

	ne.
<b>Applications:</b>	ELISA, WB, IHC
<b>Name of antibody:</b>	ATF6B
<b>Immunogen:</b>	Fusion protein of human ATF6B
<b>Full name:</b>	activating transcription factor 6 beta
<b>Synonyms:</b>	G13; CREBL1; CREB-RP
<b>SwissProt:</b>	Q99941
<b>ELISA Recommended dilution:</b>	5000-10000
<b>IHC positive control:</b>	Human thyroid cancer and human gastric cancer
<b>IHC Recommend dilution:</b>	25-100
<b>WB Predicted band size:</b>	77 kDa
<b>WB Positive control:</b>	Jurkat and Hela cell lysates
<b>WB Recommended dilution:</b>	200-1000





**mlbio** 梅联生物  
Good elisakit producers