

兔抗 CRYM 多克隆抗体

中文名称：兔抗 CRYM 多克隆抗体

英文名称： Anti-CRYM rabbit polyclonal antibody

别名： crystallin mu; THBP; DFNA40

相关类别： 一抗

储存： 冷冻（-20℃）

宿主： Rabbit

抗原： CRYM

反应种属： Human, Mouse, Rat

标记物： Unconjugate

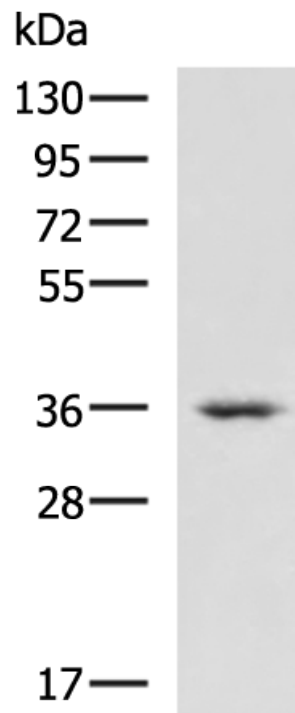
克隆类型： rabbit polyclonal

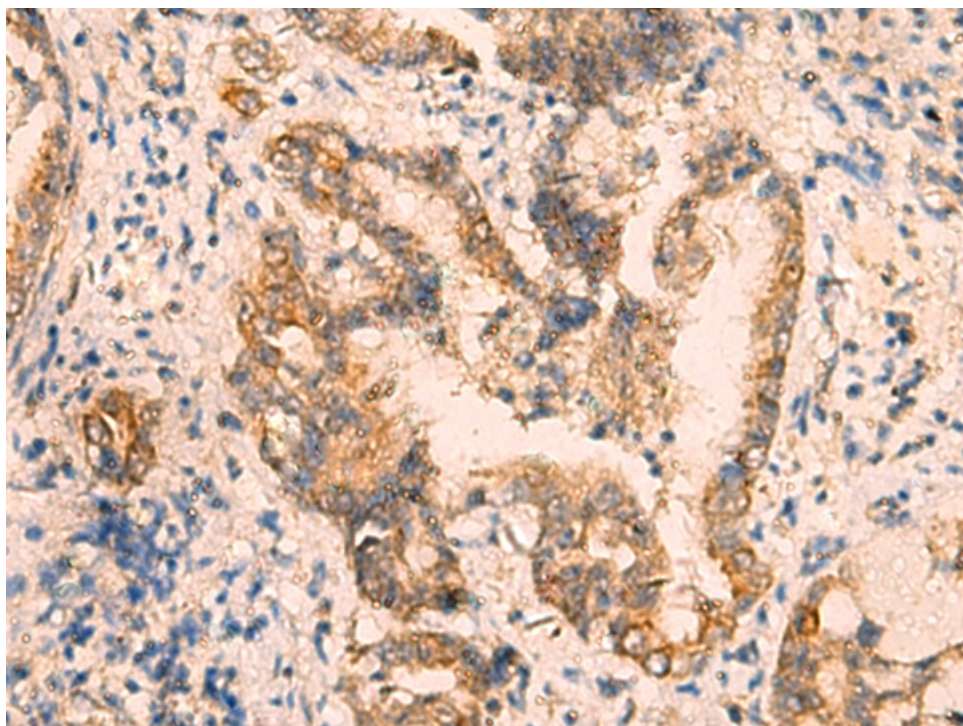
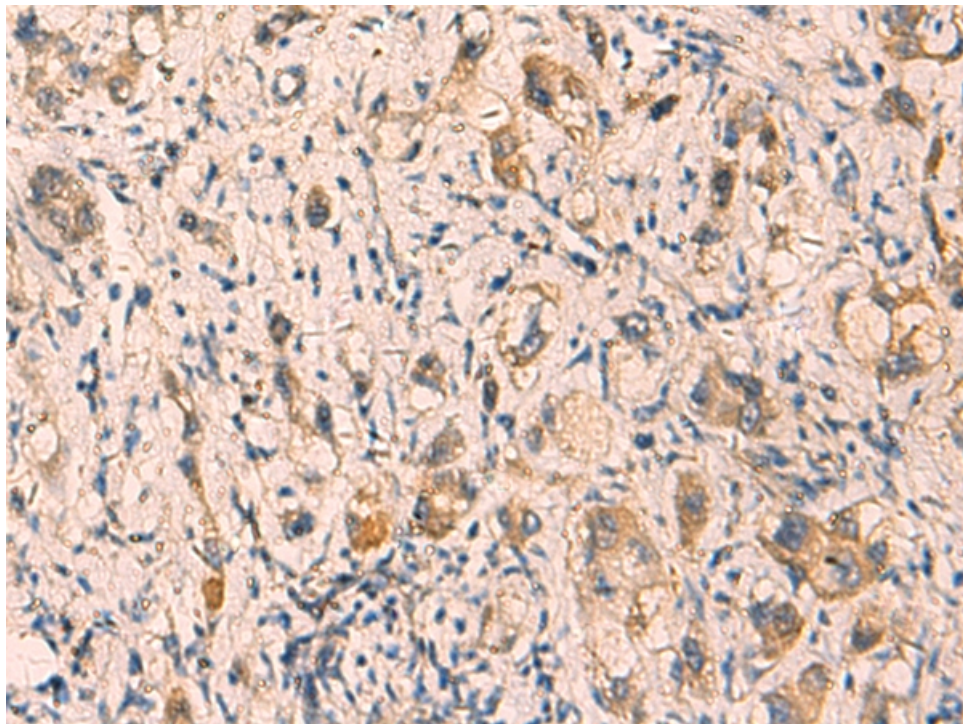
技术规格

Background:

Crystallins are separated into two classes: taxon-specific and ubiquitous. The former class is also called phylogenetically-restricted crystallins. The latter class constitutes the major proteins of vertebrate eye lens and maintains the transparency and refractive index of the lens. This gene encodes a taxon-specific crystallin protein that binds NADPH and has sequence similarity to bacterial ornithine cyclodeaminases. The encoded protein does not perform a structural role in lens tissue, and instead it binds thyroid hormone for possible regulatory or developmental roles. Mutations in this gene have been associated with autosomal dom

	inant non-syndromic deafness.
Applications:	ELISA, WB, IHC
Name of antibody:	CRYM
Immunogen:	Fusion protein of human CRYM
Full name:	crystallin mu
Synonyms:	THBP; DFNA40
SwissProt:	Q14894
ELISA Recommended dilution:	5000-10000
IHC positive control:	Human cervical cancer and Human liver cancer
IHC Recommend dilution:	50-200
WB Predicted band size:	34 kDa
WB Positive control:	Human heart tissue lysate
WB Recommended dilution:	500-2000





mlbio 梅联生物
Good elisakit producers