

兔抗 CALCRL 多克隆抗体

中文名称：兔抗 CALCRL 多克隆抗体

英文名称：Anti-CALCRL rabbit polyclonal antibody

别名：CRLR; CGRPR

相关类别：一抗

储存：冷冻（-20℃）

宿主：Rabbit

抗原：CALCRL

反应种属：Human

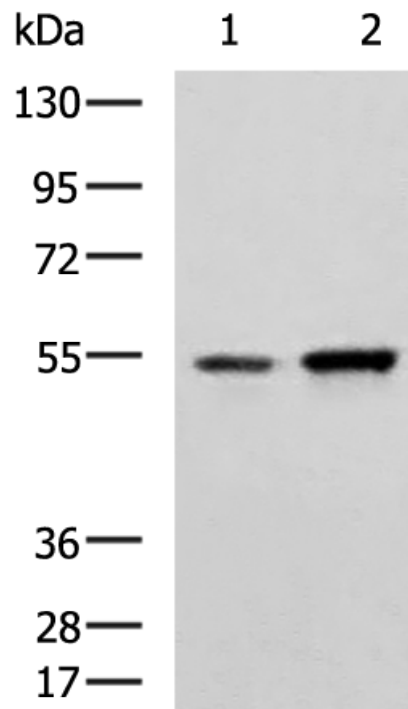
标记物：Unconjugate

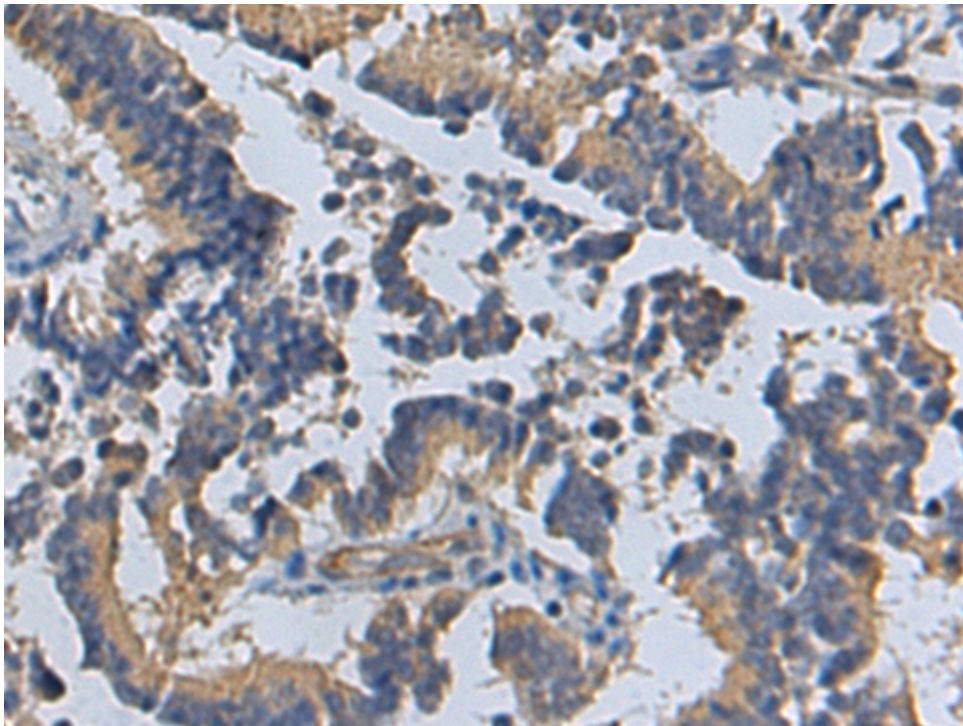
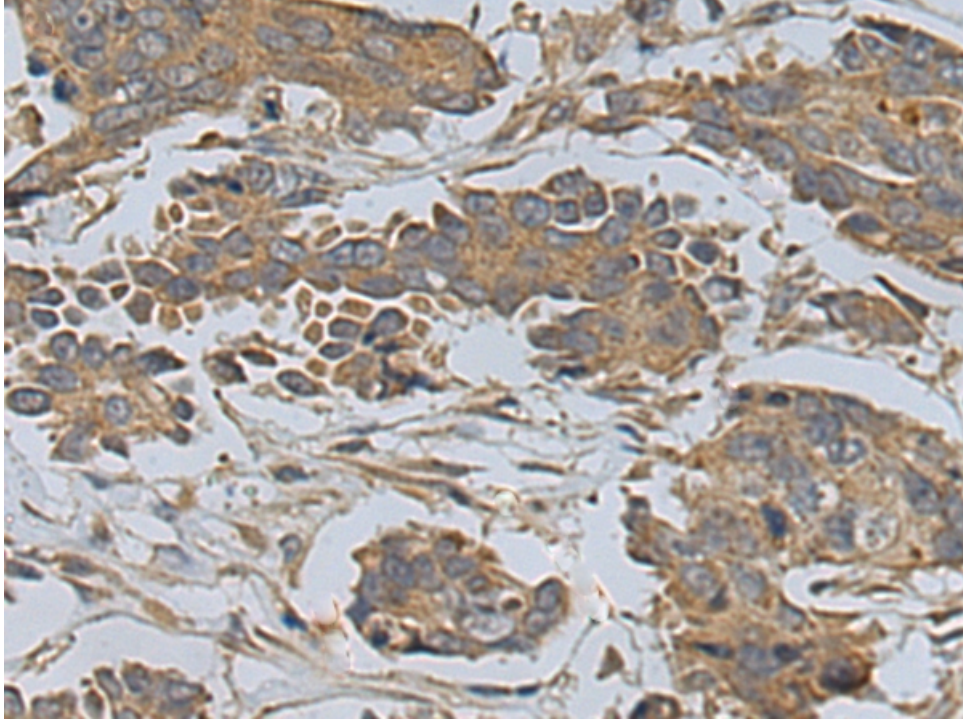
克隆类型：rabbit polyclonal

技术规格

Background:	Calcitonin receptor-like (CALCRL), also known as the calcitonin receptor-like receptor (CRLR), is a human protein. The protein encoded by the CALCRL gene is a G protein-coupled receptor related to the calcitonin receptor. CALCRL is linked to one of three single transmembrane domain receptor activity-modifying proteins (RAMPs) that are essential for functional activity.
Applications:	ELISA, WB, IHC
Name of antibody:	CALCRL
Immunogen:	Synthetic peptide of human CALCRL
Full name:	calcitonin receptor like receptor

Synonyms:	CRLR; CGRPR
SwissProt:	Q16602
ELISA Recommended dilution:	5000-10000
IHC positive control:	Human colorectal cancer and Human liver cancer
IHC Recommend dilution:	50-100
WB Predicted band size:	53 kDa
WB Positive control:	A549 and HUVEC cell lysates
WB Recommended dilution:	500-2000





mlbio 梅联生物
Good elisakit producers