

## 兔抗 CAMKK1 多克隆抗体

中文名称：兔抗 CAMKK1 多克隆抗体

英文名称：Anti-CAMKK1 rabbit polyclonal antibody

别名：calcium/calmodulin dependent protein kinase kinase 1; CAMKKA

抗原：CAMKK1

相关类别：一抗

储存：冷冻（-20℃）

宿主：Rabbit

反应种属：Human, Mouse, Rat

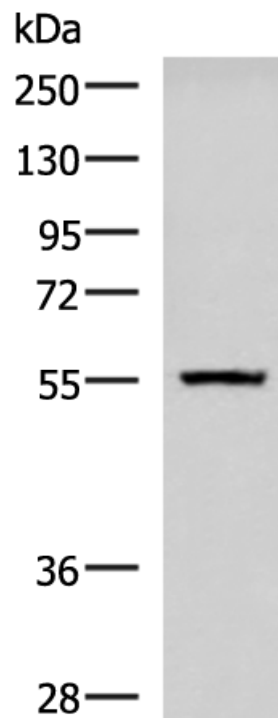
标记物：Unconjugate

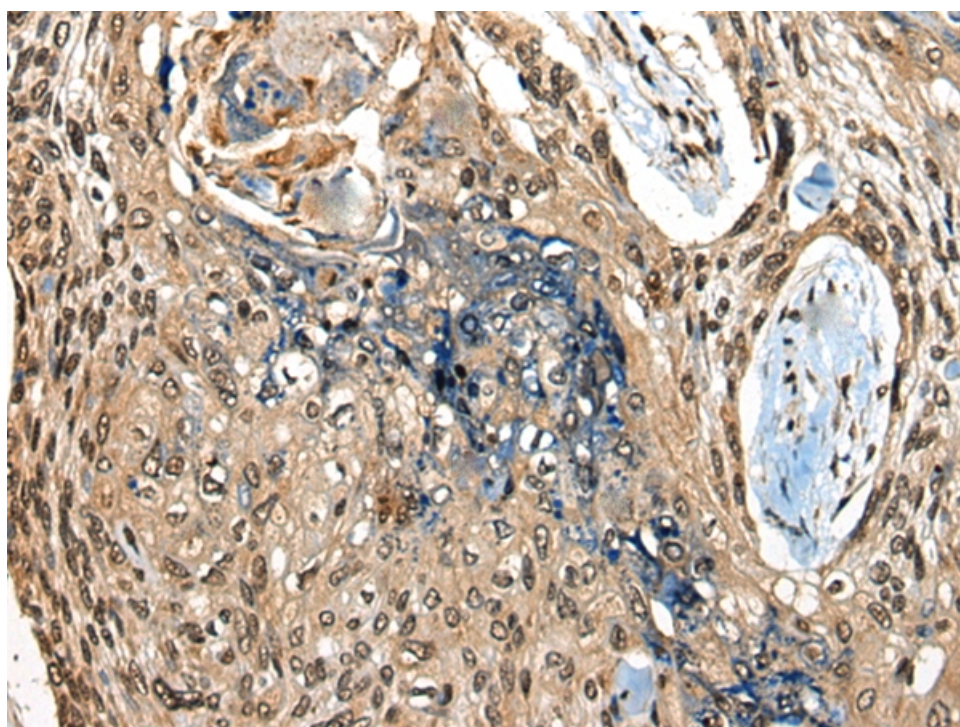
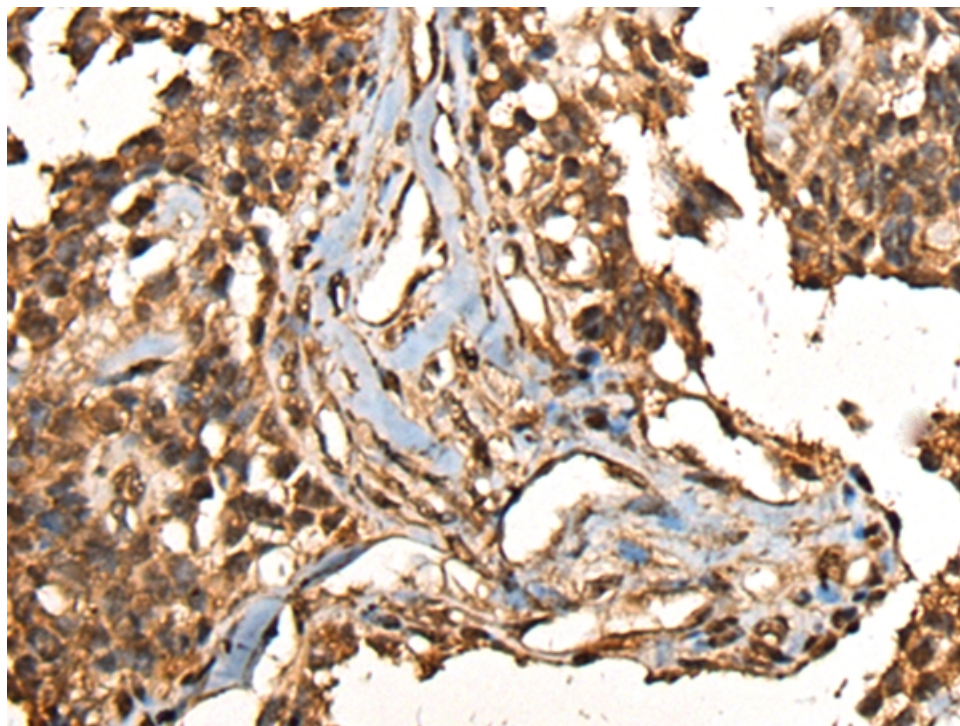
克隆类型：rabbit polyclonal

### 技术规格

<b>Background:</b>	The product of this gene belongs to the Serine/Threonine protein kinase family, and to the Ca(2+)/calmodulin-dependent protein kinase subfamily. This protein plays a role in the calcium/calmodulin-dependent (CaM) kinase cascade. Three transcript variants encoding two distinct isoforms have been identified for this gene.
<b>Applications:</b>	ELISA, WB, IHC
<b>Name of antibody:</b>	CAMKK1
<b>Immunogen:</b>	Fusion protein of human CAMKK1
<b>Full name:</b>	calcium/calmodulin dependent protein kinase kinase 1

<b>Synonyms:</b>	CAMKKA
<b>SwissProt:</b>	Q8N5S9
<b>ELISA Recommended dilution:</b>	500-1000
<b>IHC positive control:</b>	Human ovarian cancer and Human esophagus cancer
<b>IHC Recommend dilution:</b>	30-150
<b>WB Predicted band size:</b>	56 kDa
<b>WB Positive control:</b>	Human cerebella tissue lysate
<b>WB Recommended dilution:</b>	500-2000





**mlbio** 梅联生物  
Good elisakit producers