

兔抗 CCNB1 (phospho-Ser147)多克隆抗体

中文名称：兔抗 CCNB1 (phospho-Ser147)多克隆抗体

英文名称：Anti-CCNB1 (phospho-Ser147) rabbit polyclonal antibody

别名：CCNB

相关类别：一抗

储存：冷冻（-20℃）避光

宿主：Rabbit

抗原：CCNB1 (phospho-Ser147)

反应种属：Human, Mouse, Rat

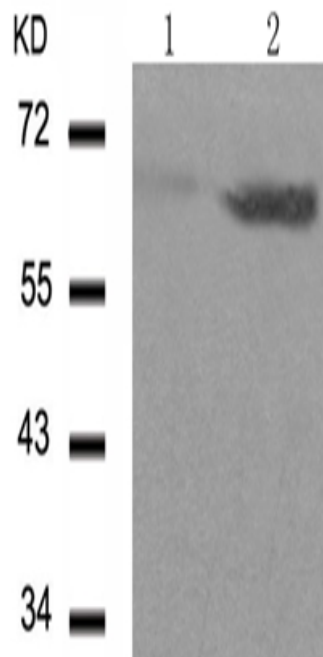
标记物：Unconjugate

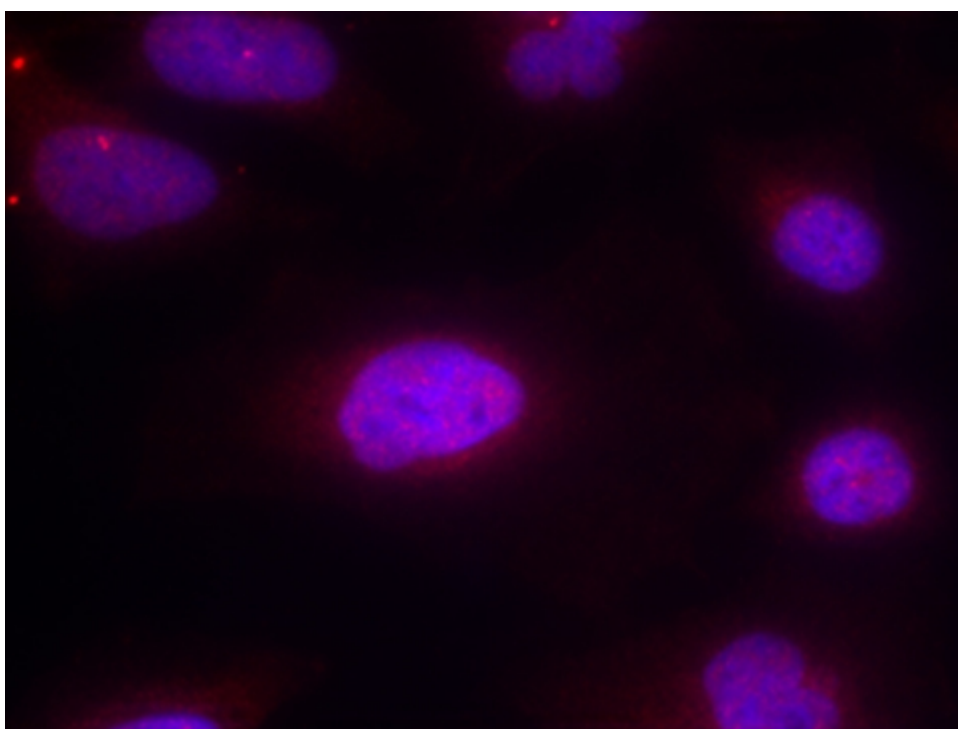
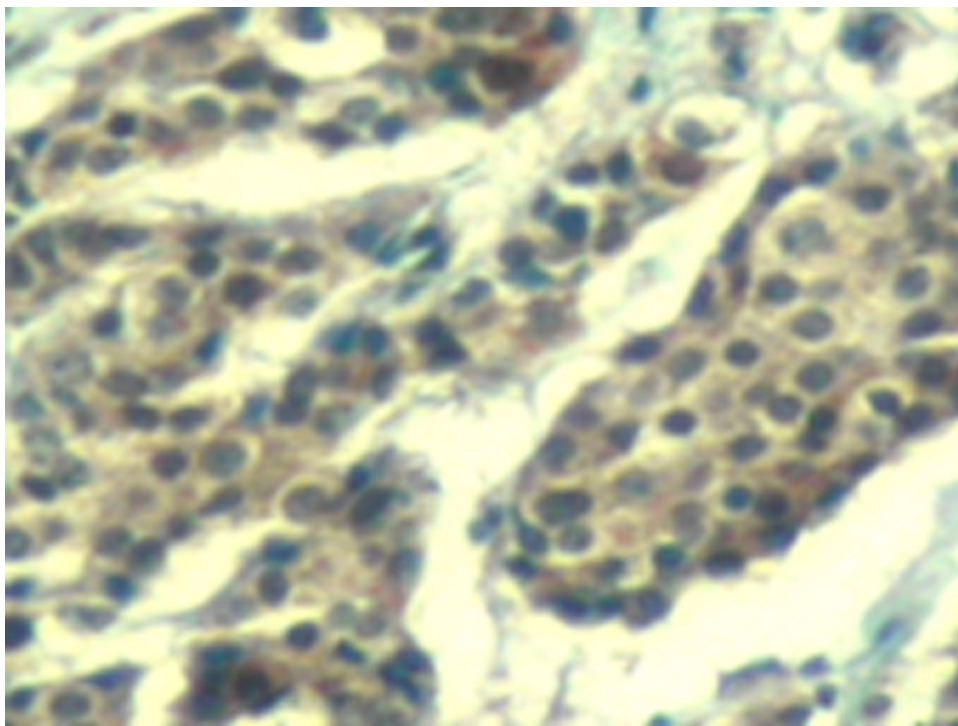
克隆类型：rabbit polyclonal

技术规格

Background:	The protein encoded by Cyclin B1 is a regulatory protein involved in mitosis. The gene product complexes with p34(cdc2) to form the maturation-promoting factor (MPF). Two alternative transcripts have been found, a constitutively expressed transcript and a cell cycle-regulated transcript, that is expressed predominantly during G2/M phase. The different transcripts result from the use of alternate transcription initiation sites.
Applications:	WB, IHC, IF
Name of antibody:	CCNB1 (phospho-Ser147)
Immunogen:	Synthetic peptide of human CCNB1 (phospho-Ser147)

Full name:	cyclin B1 (phospho-Ser147)
Synonyms :	CCNB
SwissProt:	P14635
IHC positive control:	Human breast carcinoma
IHC Recommend dilution:	50-100
WB Predicted band size:	60 kDa
WB Positive control:	MDA cells treated with Anisomycin
WB Recommended dilution:	500-1000
IF Positive control:	Hela cells
IF Recommended dilution	100-200





mlbio 梅联生物
Good elisakit producers