

## 兔抗 DUSP6 多克隆抗体

中文名称：兔抗 DUSP6 多克隆抗体

英文名称： Anti-DUSP6 rabbit polyclonal antibody

别名： MKP3, PYST1

抗原： DUSP6

储存： 冷冻（-20℃）

宿主： Rabbit

相关类别： 一抗

反应种属： Human, Mouse, Rat

标记物： Unconjugate

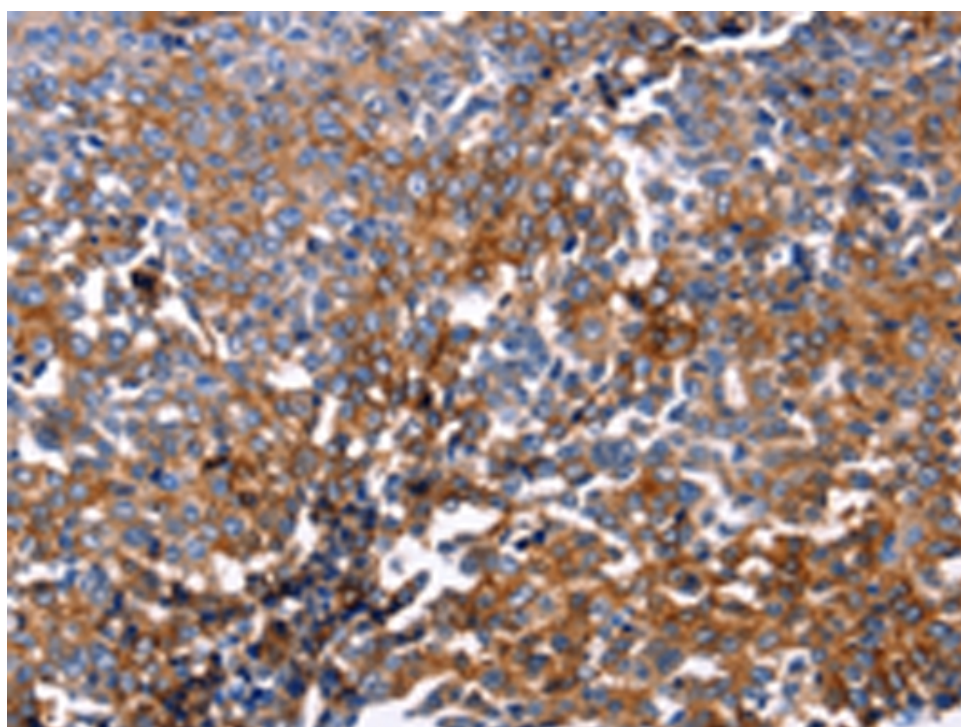
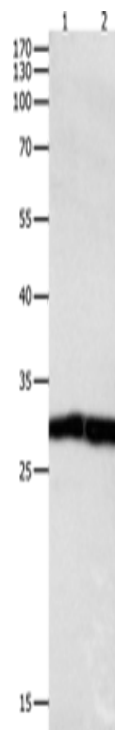
克隆类型： rabbit polyclonal

### 技术规格

#### Background:

The protein encoded by this gene is a member of the dual specificity protein phosphatase subfamily. These phosphatases inactivate their target kinases by dephosphorylating both the phosphoserine/threonine and phosphotyrosine residues. They negatively regulate members of the mitogen-activated protein (MAP) kinase superfamily (MAPK/ERK, SAPK/JNK, p38), which are associated with cellular proliferation and differentiation. Different members of the family of dual specificity phosphatases show distinct substrate specificities for various MAP kinases, different tissue distribution and subcellular localization,

|                                    |  |
|------------------------------------|--|
|                                    | and different modes of inducibility of their expression by extracellular stimuli. This gene product inactivates ERK 2, is expressed in a variety of tissues with the highest levels in heart and pancreas, and unlike most other members of this family, is localized in the cytoplasm. Two transcript variants encoding different isoforms have been found for this gene. |
| <b>Applications:</b>               | ELISA, WB, IHC   |
| <b>Name of antibody:</b>           | DUSP6  |
| <b>Immunogen:</b>                  | Fusion protein of human DUSP6  |
| <b>Full name:</b>                  | dual specificity phosphatase 6   |
| <b>Synonyms :</b>                  | MKP3, PYST1  |
| <b>SwissProt:</b>                  | Q16828   |
| <b>ELISA Recommended dilution:</b> | 1000-5000  |
| <b>IHC positive control:</b>       | Human ovarian cancer and human tonsil  |
| <b>IHC Recommend dilution:</b>     | 25-100   |
| <b>WB Predicted band size:</b>     | 27 kDa   |
| <b>WB Positive control:</b>        | Jurkat cells and human fetal kidney tissue   |
| <b>WB Recommended dilution:</b>    | 500-2000   |



**mlbio** 梅联生物  
Good elisakit producers