

兔抗 CDK6 (phospho-Tyr24)多克隆抗体

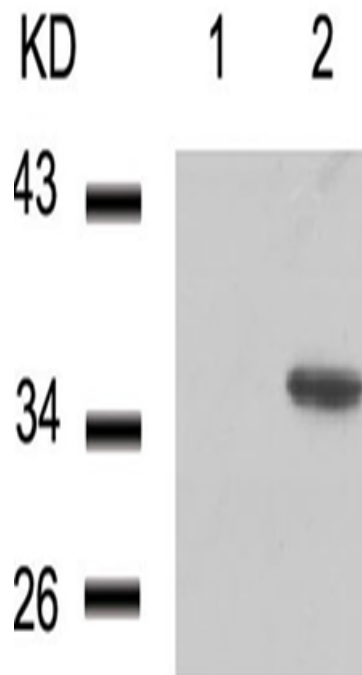
- 中文名称： 兔抗 CDK6 (phospho-Tyr24)多克隆抗体
- 英文名称： Anti-CDK6 (phospho-Tyr24) rabbit polyclonal antibody
- 别名： PLSTIRE
- 相关类别： 一抗
- 储存： 冷冻（-20℃） 避光
- 宿主： Rabbit
- 抗原： CDK6 (phospho-Tyr24)
- 反应种属： Human Mouse Rat
- 标记物： Unconjugate
- 克隆类型： rabbit polyclonal

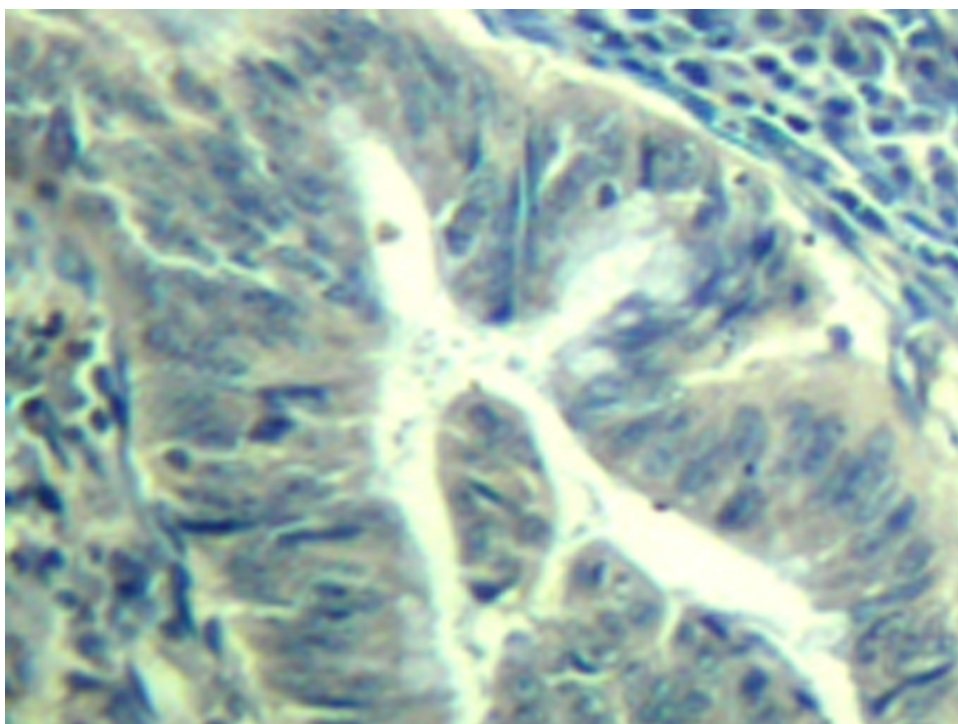
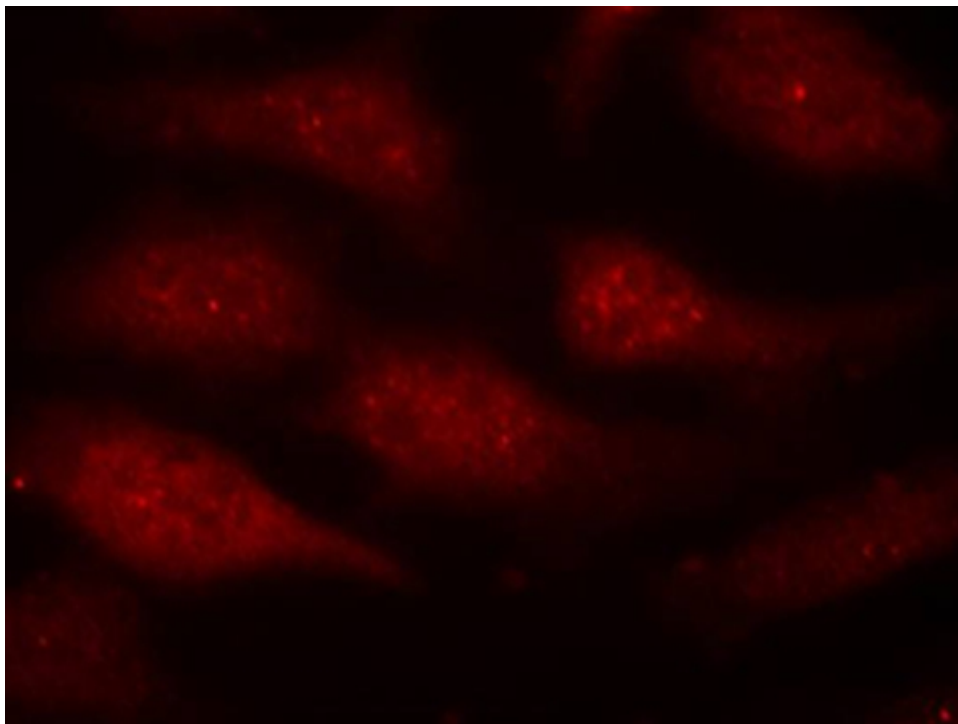
技术规格

Background:

The protein encoded by this gene is a member of the cyclin-dependent protein kinase (CDK) family. CDK family members are highly similar to the gene products of *Saccharomyces cerevisiae* cdc28, and *Schizosaccharomyces pombe* cdc2, and are known to be important regulators of cell cycle progression. This kinase is a catalytic subunit of the protein kinase complex that is important for cell cycle G1 phase progression and G1/S transition. The activity of this kinase first appears in mid-G1 phase, which is controlled by the regulatory subunits including D-type cyclins and members of INK4 family of CDK inhibitors. This kinase, as well as C

	DK4, has been shown to phosphorylate, and thus regulate the activity of, tumor suppressor protein Rb. Expression of this gene is up-regulated in some types of cancer. Multiple alternatively spliced variants, encoding the same protein, have been identified.
Applications:	WB, IHC, IF
Name of antibody:	CDK6 (phospho-Tyr24)
Immunogen:	Synthetic peptide of human CDK6 (phospho-Tyr24)
Full name:	cyclin-dependent kinase 6 (phospho-Tyr24)
Synonyms :	PLSTIRE
SwissProt:	Q00534
IHC positive control:	Human colon carcinoma
IHC Recommend dilution:	50-100
WB Predicted band size:	37 kDa
WB Positive control:	293 cells treated with starvation
WB Recommended dilution:	500-1000
IF Positive control:	Hela cells
IF Recommended dilution	100-200





mlbio 梅联生物
Good elisakit producers