

兔抗 EFNA5 多克隆抗体

中文名称：兔抗 EFNA5 多克隆抗体

英文名称：Anti-EFNA5 rabbit polyclonal antibody

别名：AF1; EFL5; RAGS; EPLG7; GLC1M; LERK7

相关类别：一抗

储存：冷冻（-20℃）

宿主：Rabbit

抗原：EFNA5

反应种属：Human, Mouse, Rat

标记物：Unconjugate

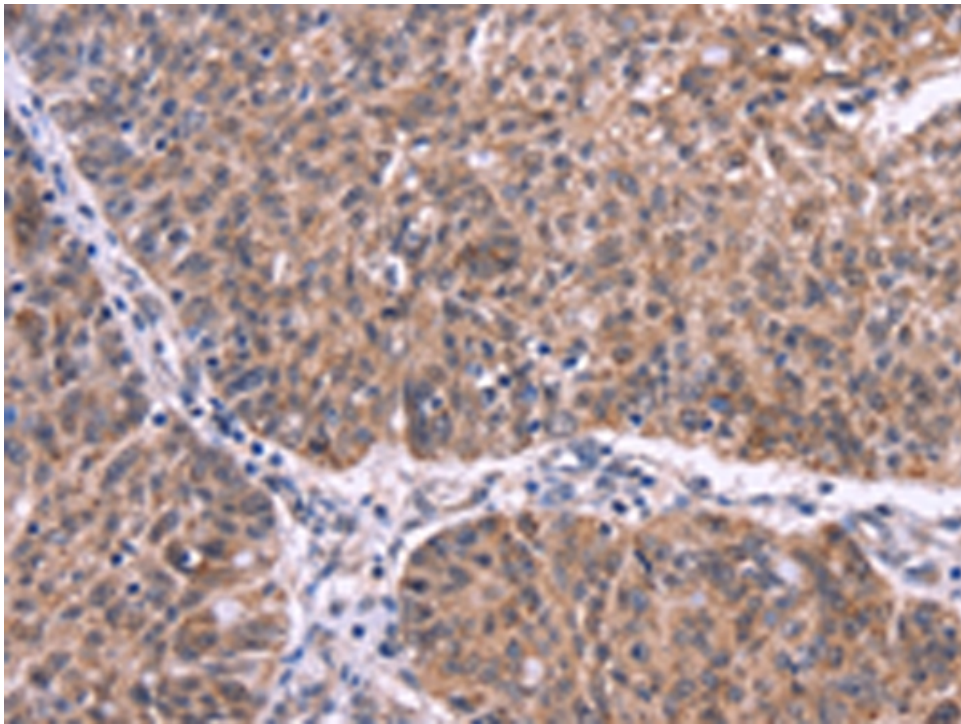
克隆类型：rabbit polyclonal

技术规格

Background:

Ephrin-A5, a member of the ephrin gene family, prevents axon bundling in cocultures of cortical neurons with astrocytes, a model of late stage nervous system development and differentiation. The EPH and EPH-related receptors comprise the largest subfamily of receptor protein-tyrosine kinases and have been implicated in mediating developmental events, particularly in the nervous system. EPH receptors typically have a single kinase domain and an extracellular region containing a Cys-rich domain and 2 fibronectin type III repeats. The ephrin ligands and receptors have been nam

	ed by the Eph Nomenclature Committee (1997).
Applications:	ELISA, IHC
Name of antibody:	EFNA5
Immunogen:	Synthetic peptide of human EFNA5
Full name:	ephrin-A5
Synonyms :	AF1; EFL5; RAGS; EPLG7; GLC1M; LERK7
SwissProt:	P52803
ELISA Recommended dilution:	2000-5000
IHC positive control:	Human ovarian cancer and Human colon cancer
IHC Recommend dilution:	50-200



mlbio 梅联生物
Good elisakit producers