

兔抗 EMILIN1 多克隆抗体

中文名称：兔抗 EMILIN1 多克隆抗体

英文名称： Anti-EMILIN1 rabbit polyclonal antibody

别名： elastin microfibril interfacier 1; EMI; gp115; EMILIN

相关类别： 一抗

储存： 冷冻（-20℃）

宿主： Rabbit

抗原： EMILIN1

反应种属： Human, Mouse

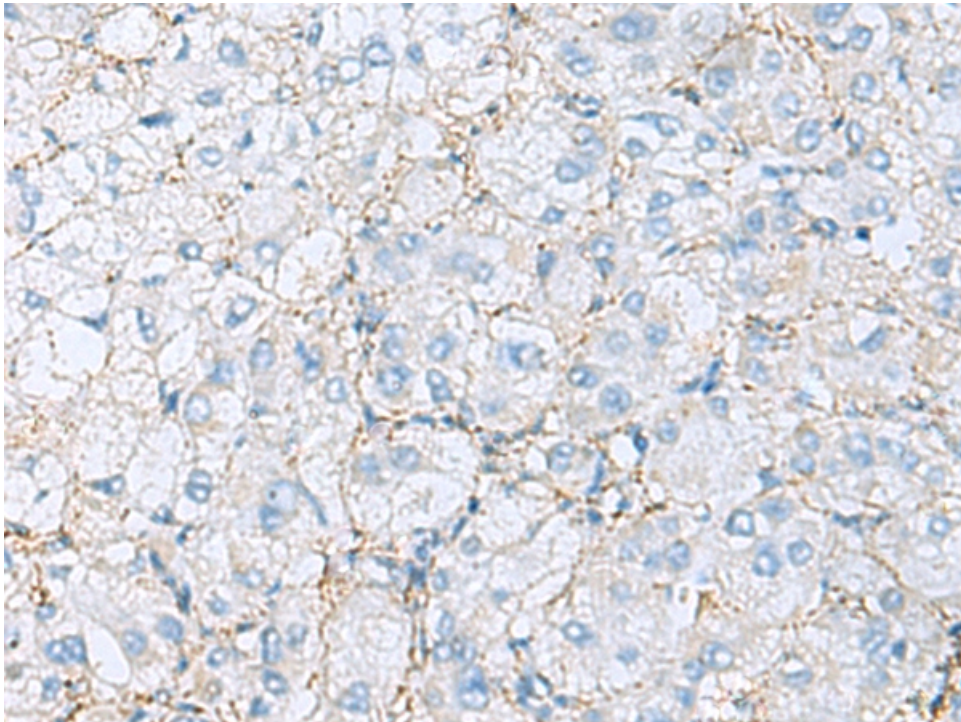
标记物： Unconjugate

克隆类型： rabbit polyclonal

技术规格

Background:	This gene encodes an extracellular matrix glycoprotein that is characterized by an N-terminal microfibril interface domain, a coiled-coiled alpha-helical domain, a collagenous domain and a C-terminal globular C1q domain. The encoded protein associates with elastic fibers at the interface between elastin and microfibrils and may play a role in the development of elastic tissues including large blood vessels, dermis, heart and lung.
Applications:	ELISA, IHC
Name of antibody:	EMILIN1

Immunogen:	Fusion protein of human EMILIN1
Full name:	elastin microfibril interfacier 1
Synonyms:	EMI; gp115; EMILIN
SwissProt:	Q9Y6C2
ELISA Recommended dilution:	5000-10000
IHC positive control:	Human tonsil and Human liver cancer
IHC Recommend dilution:	50-100



mlbio 梅联生物
Good elisakit producers

