

兔抗 EMP2 多克隆抗体

中文名称：兔抗 EMP2 多克隆抗体

英文名称：Anti-EMP2 rabbit polyclonal antibody

别名：XMP

相关类别：一抗

储存：冷冻（-20℃）

宿主：Rabbit

抗原：EMP2

反应种属：Human

标记物：Unconjugate

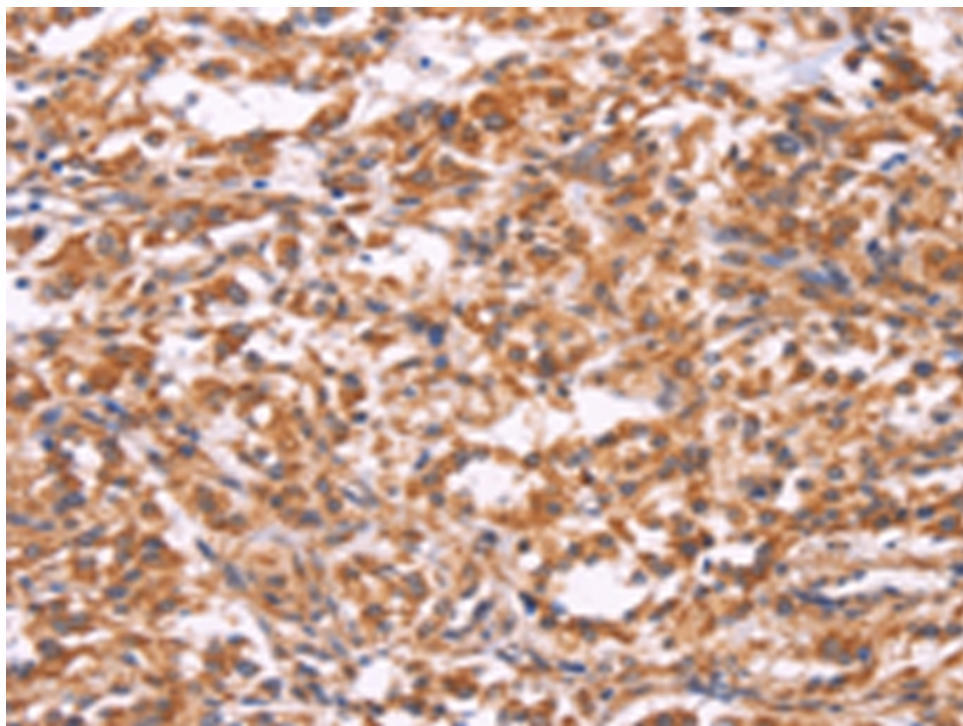
克隆类型：rabbit polyclonal

技术规格

Background:

EMP-2 (epithelial membrane protein 2), also known as XMP, is a 167 amino acid multi-pass membrane protein that contains four-transmembrane domains and belongs to the GAS3/PMP22 (growth arrest-specific-3/peripheral myelin protein-22) family. Localized to lipid raft domains in the plasma membrane, EMP-2 regulates the expression of several target proteins and is necessary for blastocyst implantation in the uterine endometrium. Specifically, EMP-2 mediates blastocyst implantation by controlling the cell membrane expression of MHC and glycosylphosphatidylinositol-anchored proteins,

	as well as Integrins and caveolin-1. In adult tissues, EMP-2 is expressed in heart, lung, ovary and intestine, while fetal expression is highest in kidney, brain and liver. Overexpression of EMP-2 is associated with endometrial adenocarcinoma, suggesting a possible role for EMP-2 in tumorigenesis.
Applications:	ELISA, IHC
Name of antibody:	EMP2
Immunogen:	Synthetic peptide of human EMP2
Full name:	epithelial membrane protein 2
Synonyms :	XMP
SwissProt:	P54851
ELISA Recommended dilution:	2000-5000
IHC positive control:	Human thyroid cancer and Human ovarian cancer
IHC Recommend dilution:	50-200



mlbio 梅联生物
Good elisakit producers