

兔抗 ERBB2 多克隆抗体

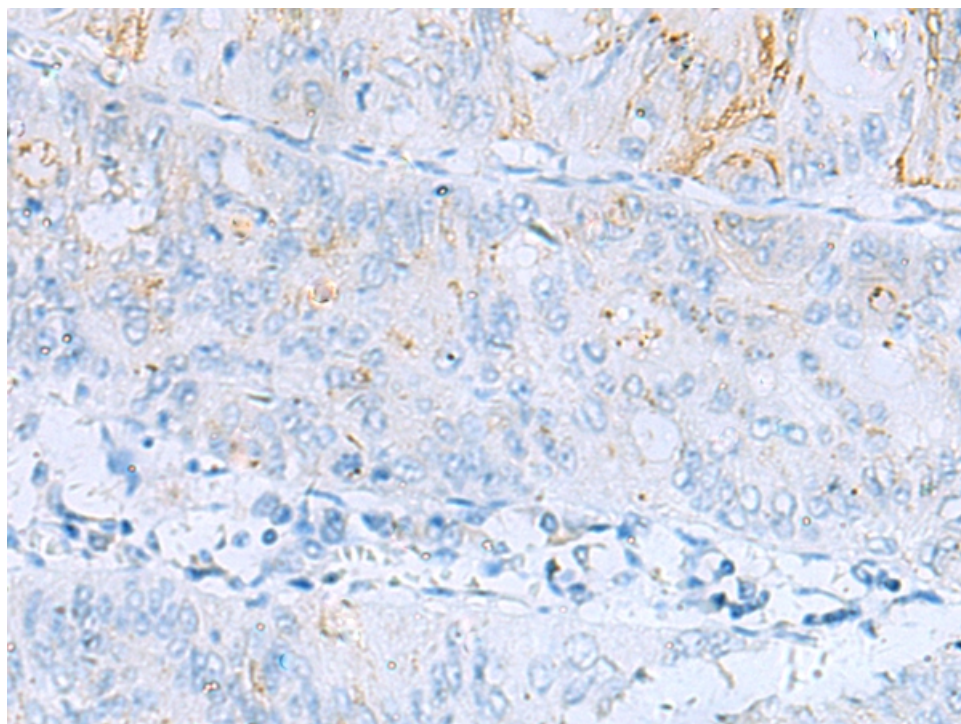
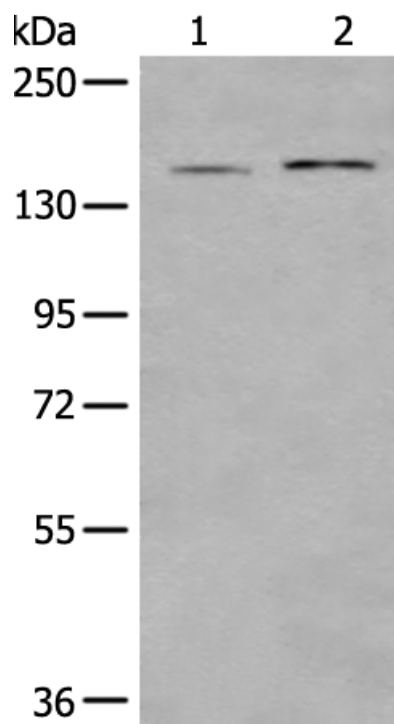
- 中文名称：兔抗 ERBB2 多克隆抗体
- 英文名称：Anti-ERBB2 rabbit polyclonal antibody
- 别名：NEU; NGL; HER2; TKR1; CD340; HER-2; MLN 19; HER-2/neu
- 相关类别：一抗
- 储存：冷冻（-20℃）
- 宿主：Rabbit
- 抗原：ERBB2
- 反应种属：Human, Mouse, Rat
- 标记物：Unconjugate
- 克隆类型：rabbit polyclonal

技术规格

Background:

The ErbB2 (HER2) proto-oncogene encodes a 185 kDa transmembrane, receptor-like glycoprotein with intrinsic tyrosine kinase activity. While ErbB2 lacks an identified ligand, ErbB2 kinase activity can be activated in the absence of a ligand when overexpressed and through heteromeric associations with other ErbB family members. Amplification of the ErbB2 gene and overexpression of its product are detected in almost 40% of human breast cancers. Binding of the c-Cbl ubiquitin ligase to ErbB2 at Tyr1112 leads to ErbB2 poly-ubiquitination and enhances degradation of this kinase. ErbB2 is a key therapeutic target in the treatment of

	breast cancer and other carcinomas and targeting the regulation of ErbB2 degradation by the c-Cbl-regulated proteolytic pathway is one potential therapeutic strategy. Phosphorylation of the kinase domain residue Tyr877 of ErbB2 (homologous to Tyr416 of pp60c-Src) may be involved in regulating ErbB2 biological activity. The major autophosphorylation sites in ErbB2 are Tyr1248 and Tyr1221/1222; phosphorylation of these sites couples ErbB2 to the Ras-Raf-MAP kinase signal transduction pathway.
Applications:	ELISA, WB, IHC
Name of antibody:	ERBB2
Immunogen:	Synthetic peptide of human ERBB2
Full name:	erb-b2 receptor tyrosine kinase 2
Synonyms:	NEU; NGL; HER2; TKR1; CD340; HER-2; MLN 19; HER-2/neu
SwissProt:	P04626
ELISA Recommended dilution:	5000-10000
IHC positive control:	Human brain and human ovarian cancer
IHC Recommend dilution:	20-100
WB Predicted band size:	138 kDa
WB Positive control:	231 and Hela cell lysates
WB Recommended dilution:	200-1000



mlbio 梅联生物
Good elisakit producers