

兔抗 CRACR2A 多克隆抗体

中文名称：兔抗 CRACR2A 多克隆抗体

英文名称：Anti-CRACR2A rabbit polyclonal antibody

别名：calcium release activated channel regulator 2A; EFCAB4B

相关类别：一抗

储存：冷冻（-20℃）

宿主：Rabbit

抗原：CRACR2A

反应种属：Human

标记物：Unconjugate

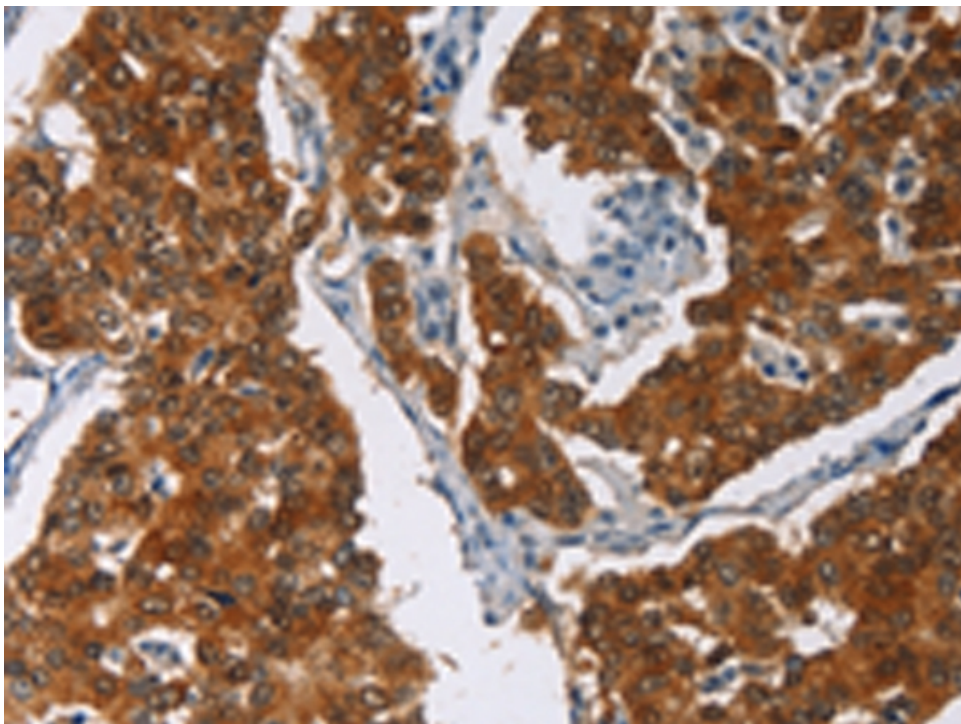
克隆类型：rabbit polyclonal

技术规格

Background:

Ca²⁺-binding protein that plays a key role in store-operated Ca²⁺ entry (SOCE) in T-cells by regulating CRAC channel activation. Acts as a cytoplasmic calcium-sensor that facilitates the clustering of ORAI1 and STIM1 at the junctional regions between the plasma membrane and the endoplasmic reticulum upon low Ca²⁺ concentration. It thereby regulates CRAC channel activation, including translocation and clustering of ORAI1 and STIM1. Upon increase of cytoplasmic Ca²⁺-resulting from opening of CRAC channels, dissociates from ORAI1 and STIM1, thereby destabilizing the ORAI1-STIM1 complex.

	ex.
Applications:	ELISA, IHC
Name of antibody:	CRACR2A
Immunogen:	Fusion protein of human CRACR2A
Full name:	calcium release activated channel regulator 2A
Synonyms:	EFCAB4B
SwissProt:	Q9BSW2
ELISA Recommended dilution:	5000-10000
IHC positive control:	Human brain
IHC Recommend dilution:	50-200



mlbio 梅联生物
Good elisakit producers