

兔抗 EXTL3 多克隆抗体

中文名称：兔抗 EXTL3 多克隆抗体

英文名称：Anti-EXTL3 rabbit polyclonal antibody

别名：RPR; BOTV; REGR; EXTR1; EXTL1L

相关类别：一抗

储存：冷冻（-20℃）

宿主：Rabbit

反应种属：Human, Mouse

标记物：Unconjugate

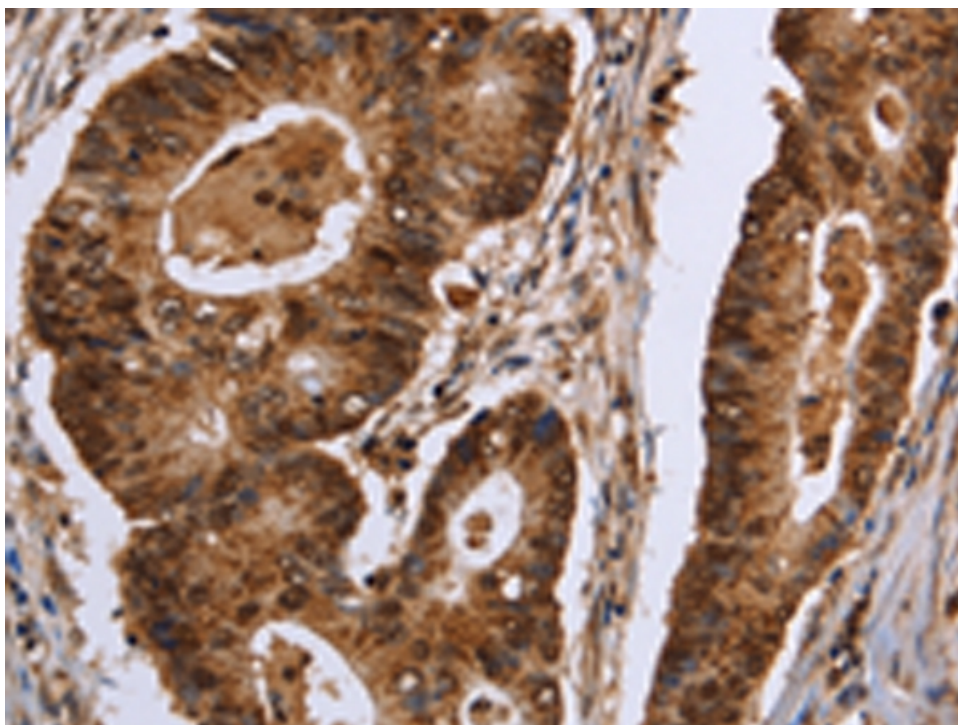
克隆类型：rabbit polyclonal

抗原：EXTL3

技术规格

Background:	This gene encodes a single-pass membrane protein which functions as a glycosyltransferase. The encoded protein catalyzes the transfer of N-acetylglucosamine to glycosaminoglycan chains. This reaction is important in heparin and heparan sulfate synthesis. Alternative splicing results in the multiple transcript variants.
Applications:	ELISA, IHC
Name of antibody:	EXTL3
Immunogen:	Fusion protein of human EXTL3
Full name:	exostosin-like glycosyltransferase 3

Synonyms :	RPR; BOTV; REGR; EXTR1; EXTL1L
SwissProt:	O43909
ELISA Recommended dilution:	2000-5000
IHC positive control:	Human colon cancer and human brain
IHC Recommend dilution:	50-200



W