

兔抗 Fbxl21 多克隆抗体

中文名称：兔抗 Fbxl21 多克隆抗体

英文名称：Anti-Fbxl21 rabbit polyclonal antibody

别名：F-box and leucine rich repeat protein 21, pseudogene; FBL3B; Fbl21; FBXL21; FBXL3B; FBXL3P

相关类别：一抗

储存：冷冻（-20℃）

宿主：Rabbit

抗原：FBXL21P

反应种属：Human

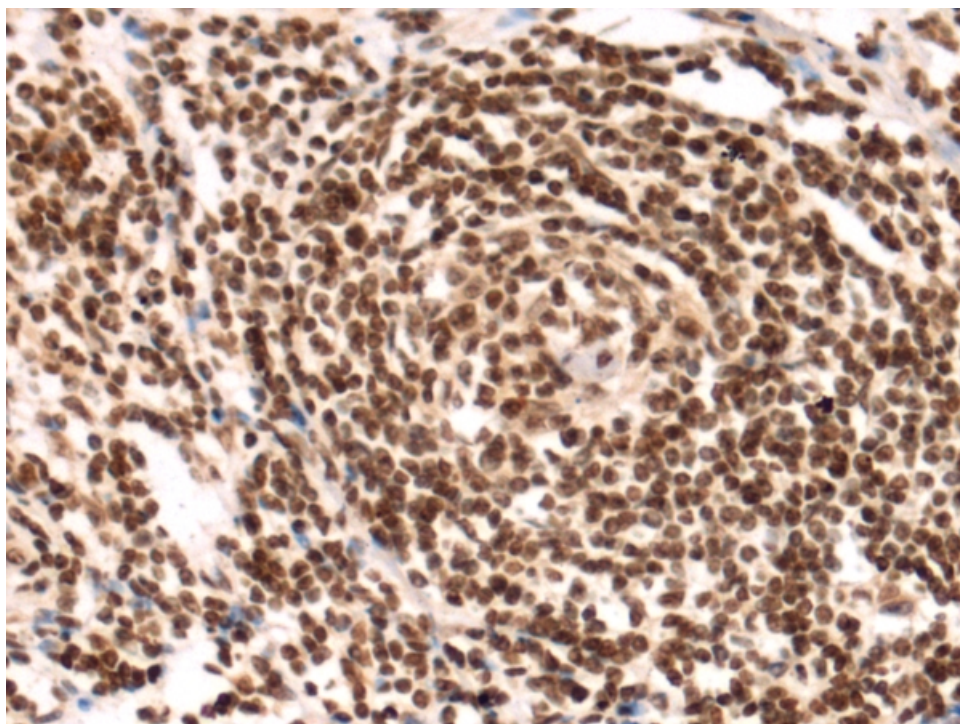
标记物：Unconjugate

克隆类型：rabbit polyclonal

技术规格

Background:	This locus represents a transcribed pseudogene that is related to genes encoding members of the F-box family of proteins. [provided by RefSeq, Nov 2017]
Applications:	ELISA, IHC
Name of antibody:	FBXL21P
Immunogen:	Fusion protein of human FBXL21P
Full name:	F-box and leucine rich repeat protein 21, pseudogene
Synonyms:	FBL3B; Fbl21; FBXL21; FBXL3B; FBXL3P
SwissProt:	Q9UKT6

ELISA Recommended dilution:	5000-10000
IHC positive control:	Human gastric cancer
IHC Recommend dilution:	200-300



mlbio 梅联生物
Good elisakit producers