

## 兔抗 FEM1B 多克隆抗体

中文名称：兔抗 FEM1B 多克隆抗体

英文名称：Anti-FEM1B rabbit polyclonal antibody

别名：F1AA; F1A-ALPHA; FEM1-beta

相关类别：一抗

储存：冷冻（-20℃）

宿主：Rabbit

抗原：FEM1B

反应种属：Human, Mouse, Rat

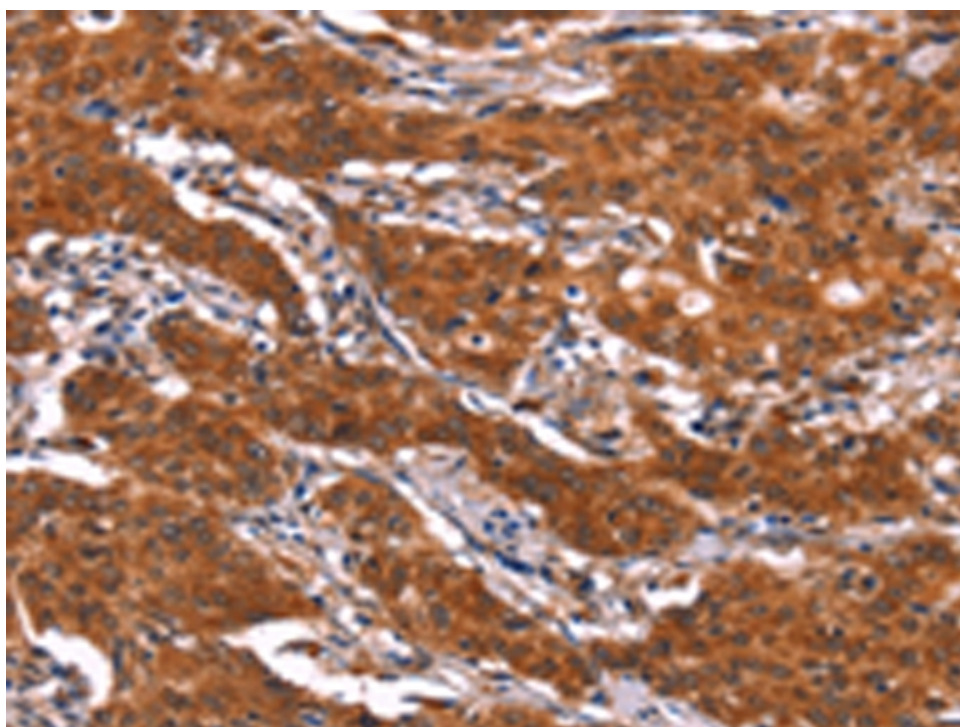
标记物：Unconjugate

克隆类型：rabbit polyclonal

### 技术规格

<b>Background:</b>	This gene encodes an ankyrin repeat protein that belongs to the death receptor-associated family of proteins and plays a role in mediating apoptosis. The encoded protein is also thought to function in the replication stress-induced checkpoint signaling pathway via interaction with checkpoint kinase 1.
<b>Applications:</b>	ELISA, IHC
<b>Name of antibody:</b>	FEM1B
<b>Immunogen:</b>	Synthetic peptide of human FEM1B
<b>Full name:</b>	fem-1 homolog B
<b>Synonyms:</b>	F1AA; F1A-ALPHA; FEM1-beta

<b>SwissProt:</b>	Q9UK73
<b>ELISA Recommended dilution:</b>	1000-2000
<b>IHC positive control:</b>	Human gasrtic cancer and Human liver cancer
<b>IHC Recommend dilution:</b>	25-100



**mlbio** 梅联生物  
Good elisakit producers