

兔抗 FGF20 多克隆抗体

中文名称：兔抗 FGF20 多克隆抗体

英文名称：Anti-FGF20 rabbit polyclonal antibody

别名：FGF-20

相关类别：一抗

储存：冷冻（-20℃）

宿主：Rabbit

抗原：FGF20

反应种属：Human, Mouse, Rat

标记物：Unconjugate

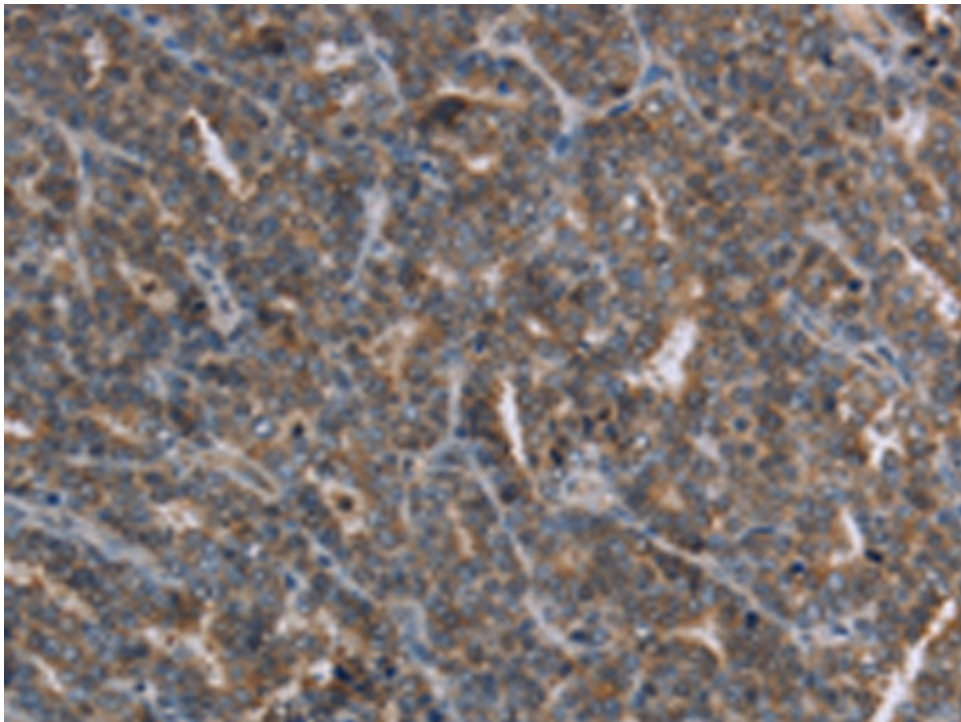
克隆类型：rabbit polyclonal

技术规格

Background:

The protein encoded by this gene is a member of the fibroblast growth factor family. The fibroblast growth factors possess broad mitogenic and cell survival activities, and are involved in a variety of biological processes including embryonic development, cell growth, morphogenesis, tissue repair, tumor growth and invasion. This gene product is a secreted neurotrophic factor but lacks a typical signal peptide. It is expressed in normal brain, particularly the cerebellum, and may regulate central nervous system development and function. Homodimerization of this protein was shown to regulate its receptor

	or binding activity and concentration gradient in the extracellular matrix. Genetic variations of this gene have been associated with Parkinson disease susceptibility.
Applications:	ELISA, IHC
Name of antibody:	FGF20
Immunogen:	Synthetic peptide of human FGF20
Full name:	fibroblast growth factor 20
Synonyms :	FGF-20
SwissProt:	Q9NP95
ELISA Recommended dilution:	1000-2000
IHC positive control:	Human ovarian cancer and Human cervical cancer
IHC Recommend dilution:	25-100



mlbio 梅联生物
Good elisakit producers