

兔抗 FKBP1A 多克隆抗体

中文名称: 兔抗 FKBP1A 多克隆抗体

英文名称: Anti-FKBP1A rabbit polyclonal antibody

别名: FK506 binding protein 1A; FKBP1; PKC12; PKC12; FKBP12; PPIASE; FKBP-12; FKBP-1A

储存: 冷冻 (-20℃)

抗原: FKBP1A

宿主: Rabbit

反应种属: Human, Mouse, Rat

相关类别: 一抗

标记物: Unconjugate

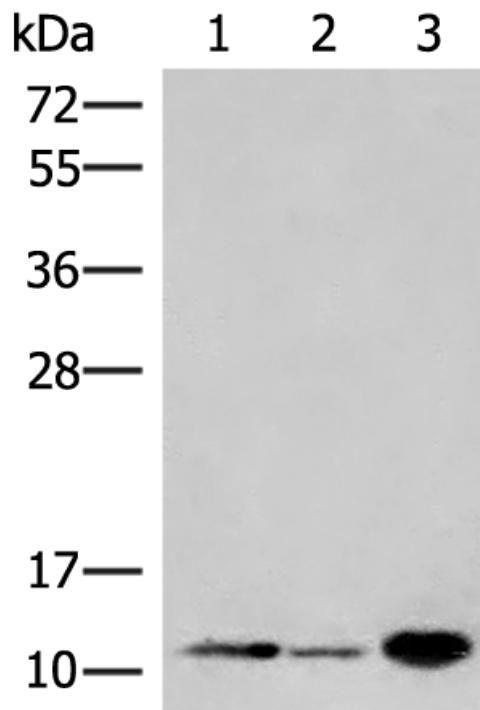
克隆类型: rabbit polyclonal

技术规格

Background:

The protein encoded by this gene is a member of the immunophilin protein family, which play a role in immunoregulation and basic cellular processes involving protein folding and trafficking. The protein is a cis-trans prolyl isomerase that binds the immunosuppressants FK506 and rapamycin. It interacts with several intracellular signal transduction proteins including type I TGF-beta receptor. It also interacts with multiple intracellular calcium release channels, and coordinates multi-protein complex formation of the tetrameric skeletal muscle ryanodine receptor. I

	<p>n mouse, deletion of this homologous gene causes congenital heart disorder known as noncompaction of left ventricular myocardium. Multiple alternatively spliced variants, encoding the same protein, have been identified. The human genome contains five pseudogenes related to this gene, at least one of which is transcribed.</p>
Applications:	ELISA, IHC
Name of antibody:	FKBP1A
Immunogen:	Fusion protein of human FKBP1A
Full name:	FK506 binding protein 1A
Synonyms:	FKBP1; PKC12; PKCI2; FKBP12; PPIASE; FKBP-12; FKBP-1A
SwissProt:	P62942
ELISA Recommended dilution:	5000-10000
IHC positive control:	Human cervical cancer
IHC Recommend dilution:	50-300



mlbio 梅联生物
Good elisakit producers

