

## 兔抗 FLG 多克隆抗体

中文名称：兔抗 FLG 多克隆抗体

英文名称：Anti-FLG rabbit polyclonal antibody

别名：ATOD2

相关类别：一抗

储存：冷冻（-20℃）

宿主：Rabbit

抗原：FLG

反应种属：Human

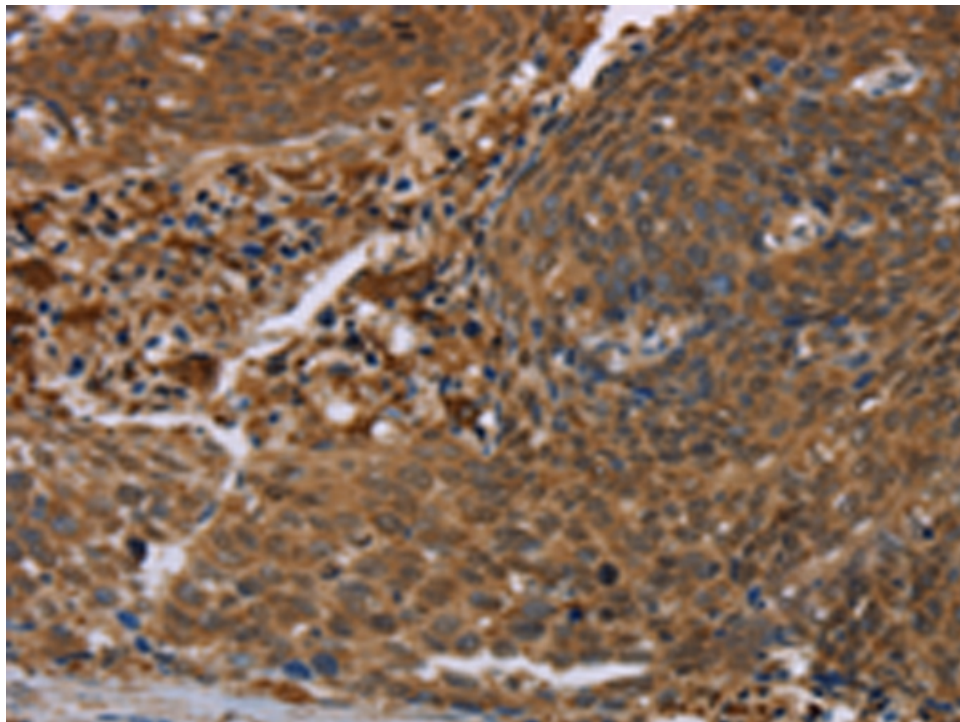
标记物：Unconjugate

克隆类型：rabbit polyclonal

### 技术规格

<b>Background:</b>	The protein encoded by this gene is an intermediate filament-associated protein that aggregates keratin intermediate filaments in mammalian epidermis. It is initially synthesized as a polyprotein precursor, profilaggrin (consisting of multiple filaggrin units of 324 aa each), which is localized in keratohyalin granules, and is subsequently proteolytically processed into individual functional filaggrin molecules. Mutations in this gene are associated with ichthyosis vulgaris.
<b>Applications:</b>	ELISA, IHC
<b>Name of antibody:</b>	FLG

<b>Immunogen:</b>	Synthetic peptide of human FLG
<b>Full name:</b>	filaggrin
<b>Synonyms :</b>	ATOD2
<b>SwissProt:</b>	P20930
<b>ELISA Recommended dilution:</b>	1000-2000
<b>IHC positive control:</b>	Human cervical cancer and Human liver cancer
<b>IHC Recommend dilution:</b>	25-100



**mlbio** 梅联生物  
Good elisakit producers