

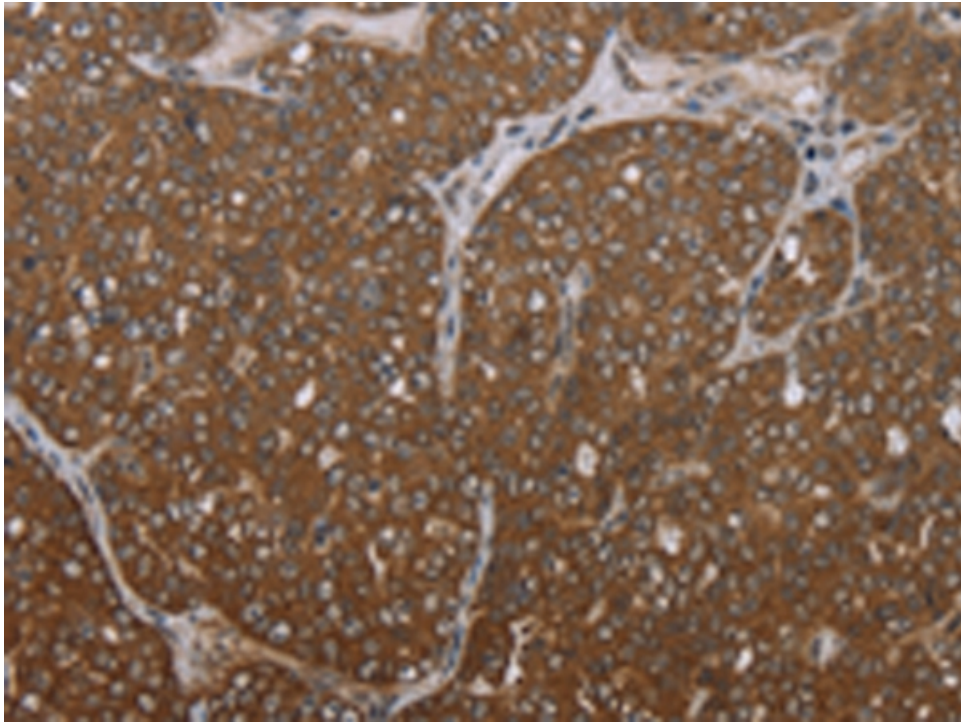
## 兔抗 FOLH1B 多克隆抗体

- 中文名称：兔抗 FOLH1B 多克隆抗体
- 英文名称：Anti-FOLH1B rabbit polyclonal antibody
- 别名：PSM; GCP3; FOLH2; FOLHP; PSMAL; GCPIII; PSMA-LIKE
- 相关类别：一抗
- 储存：冷冻（-20℃）
- 宿主：Rabbit
- 抗原：FOLH1B
- 反应种属：Human
- 标记物：Unconjugate
- 克隆类型：rabbit polyclonal

### 技术规格

<b>Background:</b>	PSM is an integral membrane protein, and PCTA-1 is related to the galectin gene family, which mediate both cell-cell and cell-matrix interactions in a manner similar to the selectin subgroup of C-type lectins. STEAP is a serpentine transmembrane cell-surface tumor-antigen that is predicted to function as a channel or transporter protein. In addition to prostate cancers, STEAP is also upregulated in bladder, colon and ovarian cancers.
<b>Applications:</b>	ELISA, IHC
<b>Name of antibody:</b>	FOLH1B

<b>Immunogen:</b>	Synthetic peptide of human FOLH1B
<b>Full name:</b>	folate hydrolase 1B
<b>Synonyms :</b>	PSM; GCP3; FOLH2; FOLHP; PSMAL; GCPIII; PSMA-LIKE
<b>SwissProt:</b>	Q9HBA9
<b>ELISA Recommended dilution:</b>	2000-5000
<b>IHC positive control:</b>	Human ovarian cancer and Human colon cancer
<b>IHC Recommend dilution:</b>	50-200



**mlbio** 梅联生物  
Good elisakit producers