

兔抗 GPR18 多克隆抗体

中文名称：兔抗 GPR18 多克隆抗体

英文名称： Anti-GPR18 rabbit polyclonal antibody

别名： G protein-coupled receptor 18

相关类别： 一抗

储存： 冷冻（-20℃）

宿主： Rabbit

抗原： GPR18

反应种属： Human, Mouse, Rat

标记物： Unconjugate

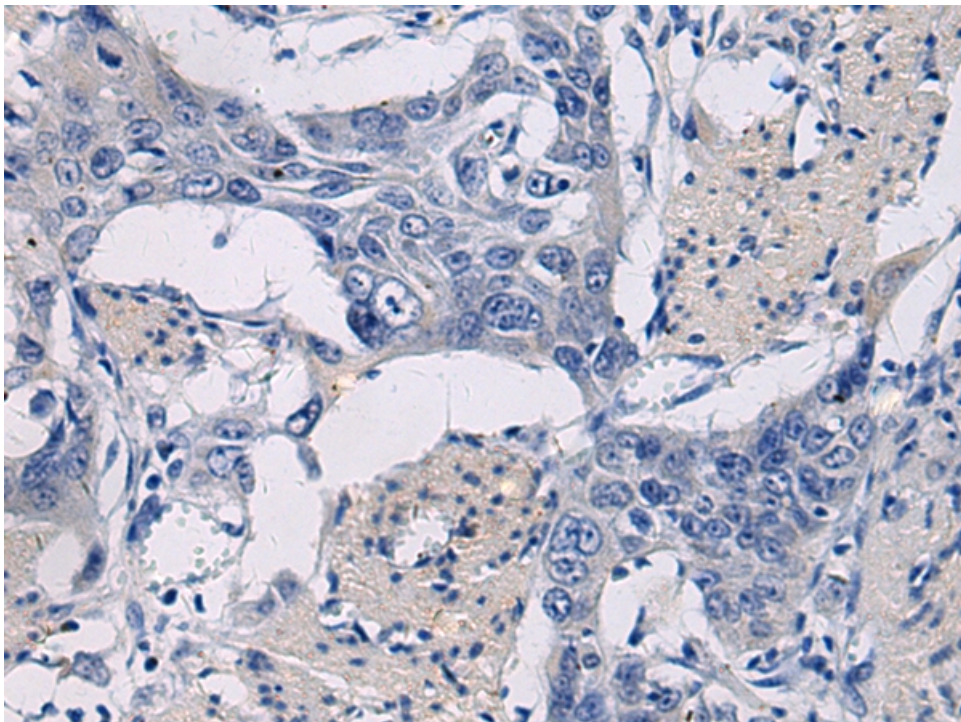
克隆类型： rabbit polyclonal

技术规格

Background:

Receptor for endocannabinoid N-arachidonyl glycine (NAGly) (PubMed:16844083, PubMed:24762058, PubMed:27572937). However, conflicting results about the role of NAGly as an agonist are reported (PubMed:27018161). Can also be activated by plant-derived and synthetic cannabinoid agonists (PubMed:24762058). The activity of this receptor is mediated by G proteins which inhibit adenylyl cyclase (PubMed:16844083). May contribute to regulation of the immune system. Is required for normal homeostasis of CD8+ subsets of intraepithelial lymphocytes (IELs) (CD8alphaalpha and

	CD8alphabeta IELs)in small intestine by supporting preferential migration of CD8alphaalpha T-cells to intraepithelial compartment over lamina propria compartment, and by mediating their reconstitution into small intestine after bone marrow transplant (By similarity). Plays a role in hypotensive responses, mediating reduction in intraocular and blood pressure (By similarity). Mediates NAGly-induced process of reorganization of actin filaments and induction of acrosomal exocytosis (PubMed:27572937).
Applications:	ELISA, IHC
Name of antibody:	GPR18
Immunogen:	Synthetic peptide of human GPR18
Full name:	G protein-coupled receptor 18
SwissProt:	Q14330
ELISA Recommended dilution:	500-1000
IHC positive control:	Human esophagus cancer
IHC Recommend dilution:	25-50



mlbio 梅联生物
Good elisakit producers