

## 兔抗 GPR89A/GPR89B 多克隆抗体

中文名称: 兔抗 GPR89A/GPR89B 多克隆抗体

英文名称: Anti-GPR89A/GPR89B rabbit polyclonal antibody

别名: G protein-coupled receptor 89A/B; GPHR; GPR89; SH120; GPR89B; GPR89C; UNQ192

抗原: GPR89A/GPR89B

储存: 冷冻 (-20°C)

宿主: Rabbit

相关类别: 一抗

反应种属: Human, Mouse

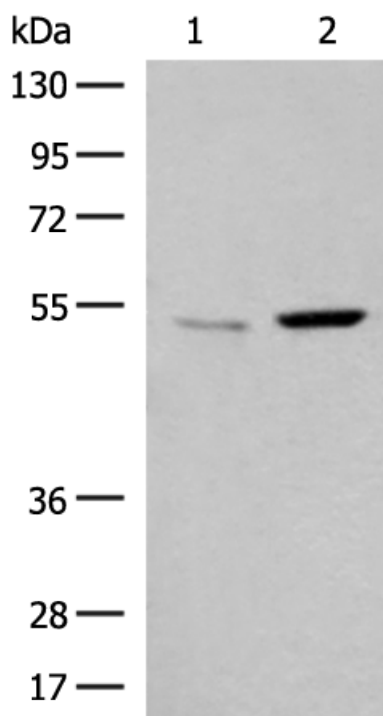
标记物: Unconjugate

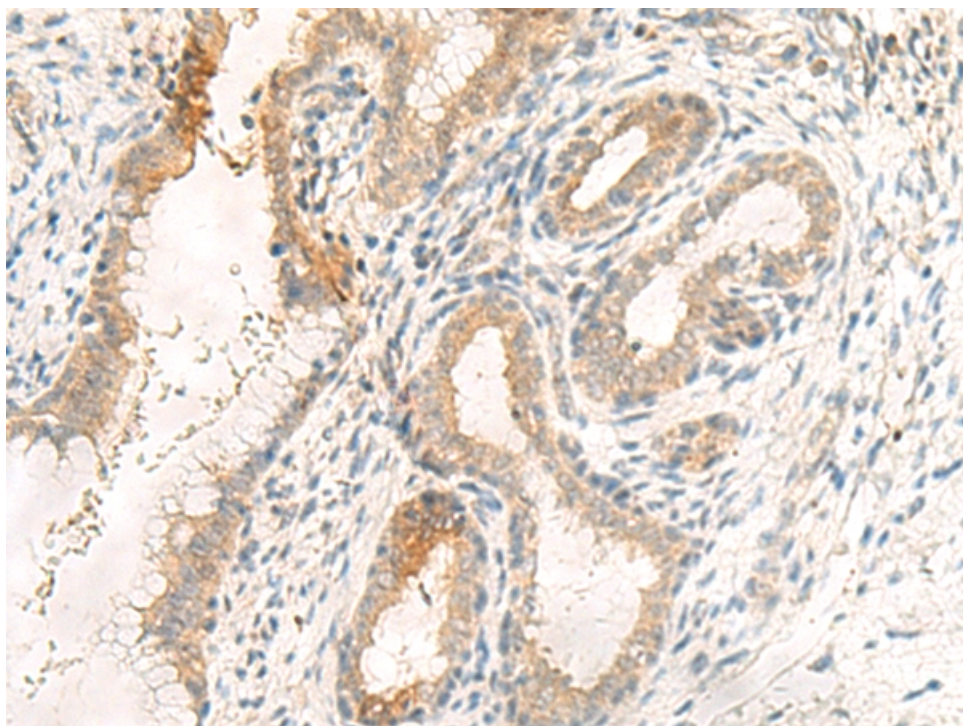
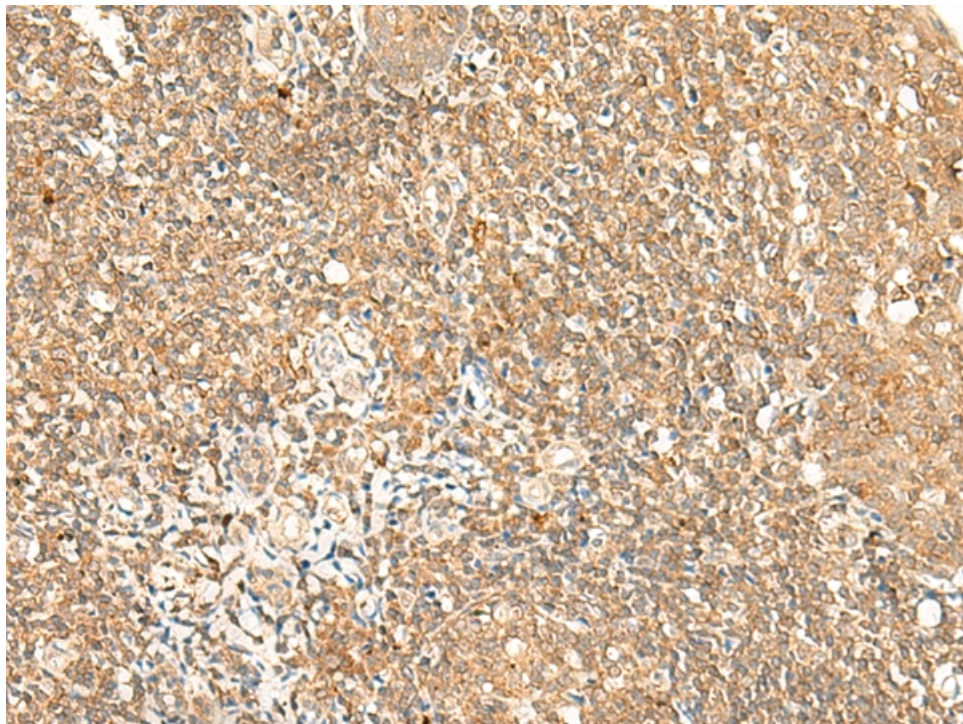
克隆类型: rabbit polyclonal

### 技术规格

<b>Background:</b>	GPR89A is a nearly identical copy of the GPR89B gene (MIM 612806). Voltage dependent anion channel required for acidification and functions of the Golgi apparatus that may function in counter-ion conductance.
<b>Applications:</b>	ELISA, IHC
<b>Name of antibody:</b>	GPR89A/GPR89B
<b>Immunogen:</b>	Synthetic peptide of human GPR89A/GPR89B
<b>Full name:</b>	G protein-coupled receptor 89A/B
<b>Synonyms:</b>	GPHR; GPR89; SH120; GPR89B; GPR89C; UNQ192
<b>SwissProt:</b>	B7ZAQ6/P0CG08
<b>ELISA Recommended dilution:</b>	5000-10000

<b>IHC positive control:</b>	Human tonsil and Human cervical cancer
<b>IHC Recommend dilution:</b>	30-150





**mlbio** 梅联生物  
Good elisakit producers