

兔抗 GPR146 多克隆抗体

中文名称: 兔抗 GPR146 多克隆抗体

英文名称: Anti-GPR146 rabbit polyclonal antibody

别名: G protein-coupled receptor 146; PGR8

抗原: GPR146

储存: 冷冻 (-20°C)

宿主: Rabbit

反应种属: Human

相关类别: 一抗

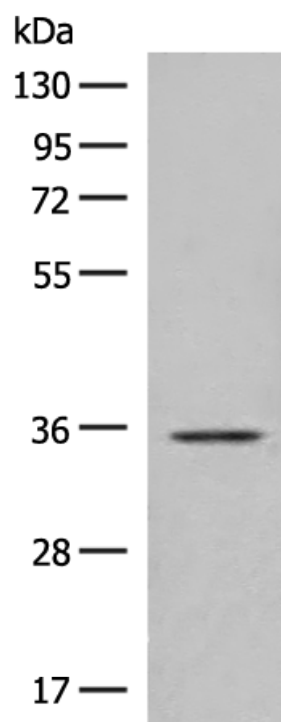
标记物: Unconjugate

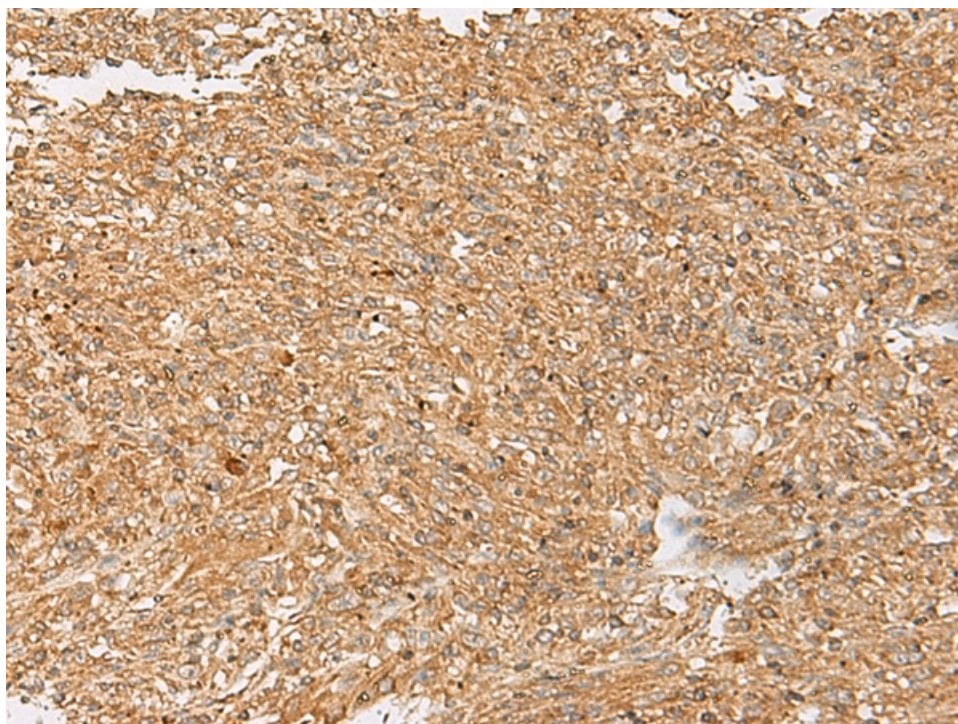
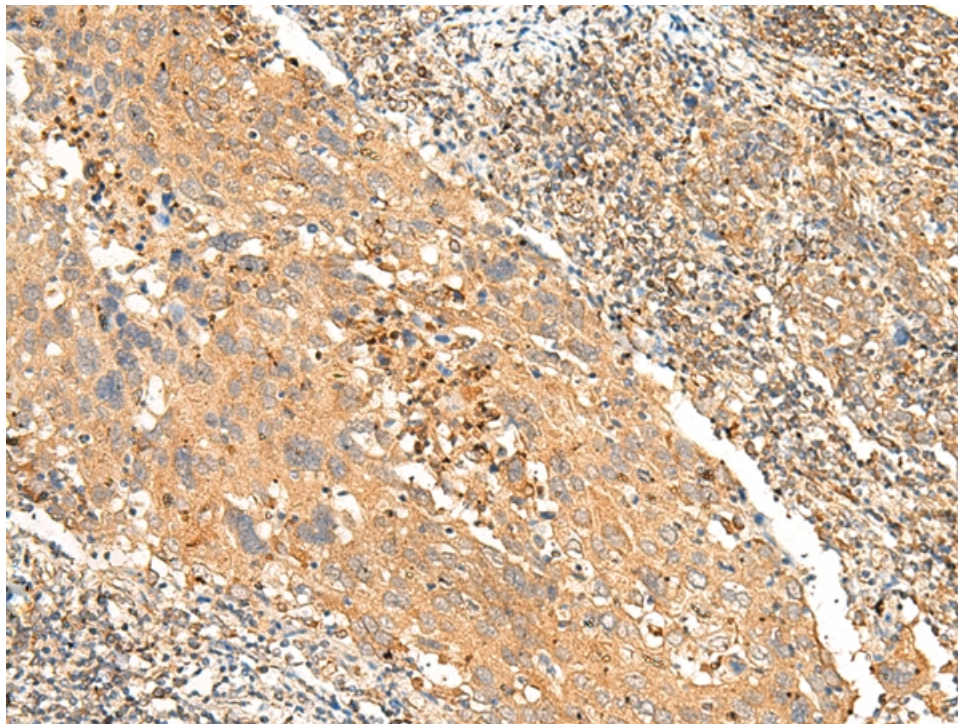
克隆类型: rabbit polyclonal

技术规格

Background:	Orphan receptor.
Applications:	ELISA, WB, IHC
Name of antibody:	GPR146
Immunogen:	Synthetic peptide of human GPR146
Full name:	G protein-coupled receptor 146
Synonyms:	PGR8
SwissProt:	Q96CH1
ELISA Recommended dilution:	5000-10000
IHC positive control:	Human cervical cancer and Human liver cancer
IHC Recommend dilution:	30-150
WB Predicted band size:	36 kDa

WB Positive control:	A172 cell lysate
WB Recommended dilution:	200-1000





mlbio 梅联生物
Good elisakit producers