

兔抗 GPR176 多克隆抗体

中文名称: 兔抗 GPR176 多克隆抗体

英文名称: Anti-GPR176 rabbit polyclonal antibody

别名: G protein-coupled receptor 176; HB-954

抗原: GPR176

储存: 冷冻 (-20℃)

宿主: Rabbit

反应种属: Human, Mouse, Rat

相关类别: 一抗

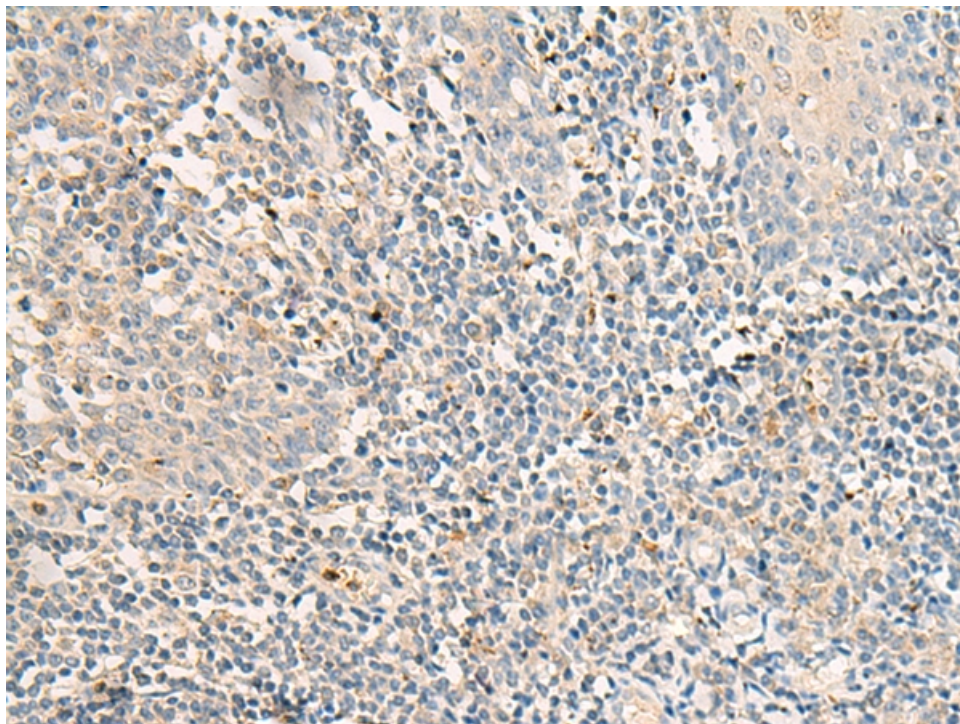
标记物: Unconjugate

克隆类型: rabbit polyclonal

技术规格

Background:	Members of the G protein-coupled receptor family, such as GPR176, are cell surface receptors involved in responses to hormones, growth factors, and neurotransmitters (Hata et al., 1995 [PubMed 7893747]).
Applications:	ELISA, IHC
Name of antibody:	GPR176
Immunogen:	Synthetic peptide of human GPR176
Full name:	G protein-coupled receptor 176
Synonyms:	HB-954
SwissProt:	Q14439
ELISA Recommended dilution:	5000-10000

IHC positive control:	Human tonsil
IHC Recommend dilution:	20-100



mlbio 梅联生物
Good elisakit producers