

## 兔抗 MAP3K11 多克隆抗体

中文名称: 兔抗 MAP3K11 多克隆抗体

英文名称: Anti-MAP3K11 rabbit polyclonal antibody

别名: MLK3; PTK1; SPRK; MLK-3; MEKK11

相关类别: 一抗

储存: 冷冻 (-20℃)

宿主: Rabbit

抗原: MAP3K11

反应种属: Human, Mouse, Rat

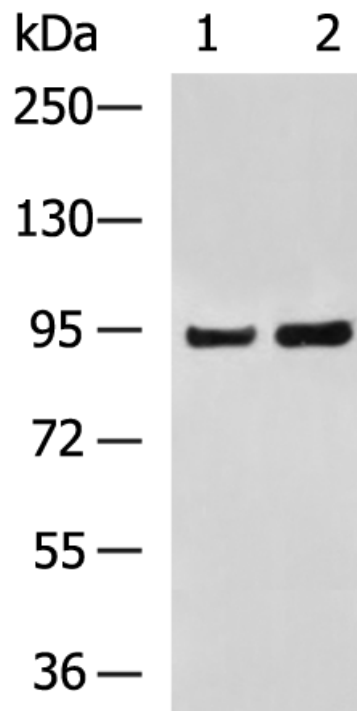
标记物: Unconjugate

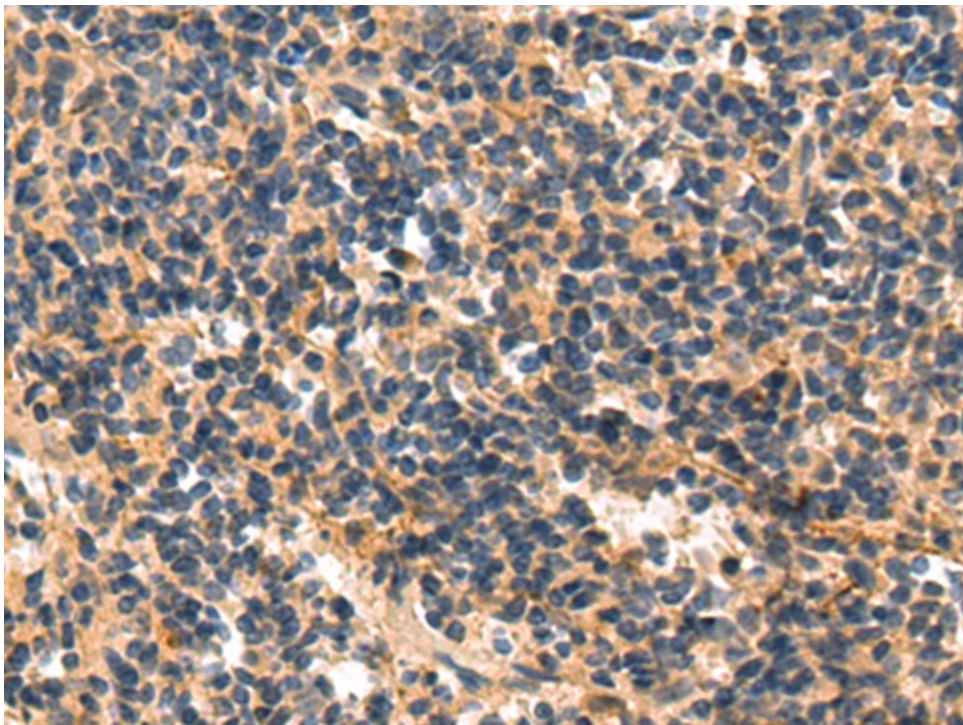
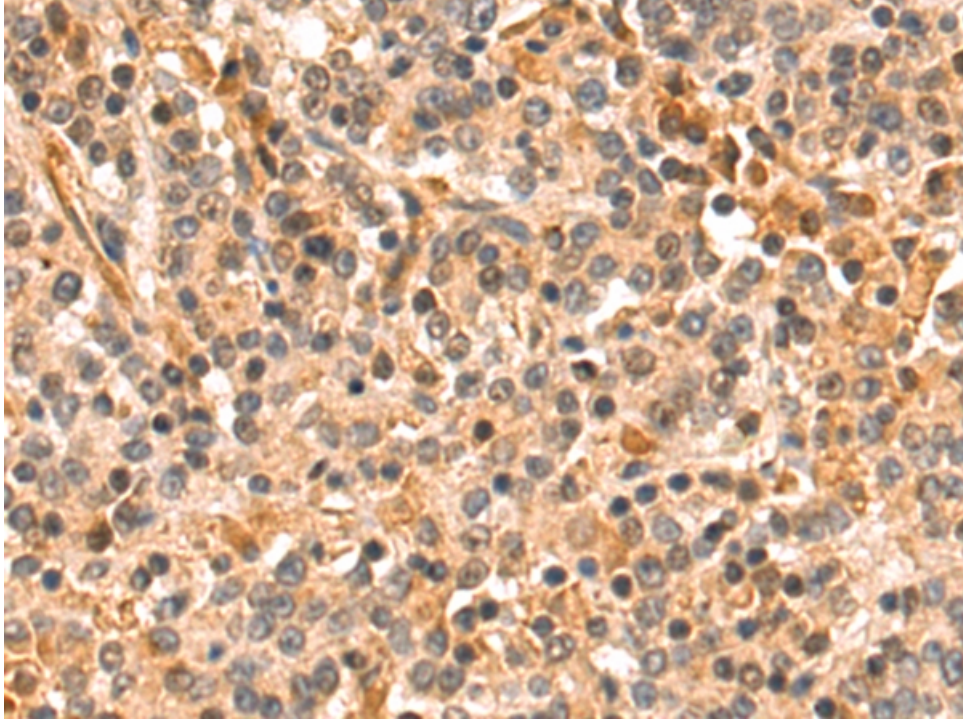
克隆类型: rabbit polyclonal

### 技术规格

<b>Background:</b>	The protein encoded by this gene is a member of the serine/threonine kinase family. This kinase contains a SH3 domain and a leucine zipper-basic motif. This kinase preferentially activates MAPK8/JNK kinase, and functions as a positive regulator of JNK signaling pathway. This kinase can directly phosphorylate, and activates I $\kappa$ B kinase alpha and beta, and is found to be involved in the transcription activity of NF- $\kappa$ B mediated by Rho family GTPases and CDC42.
<b>Applications:</b>	ELISA, WB, IHC
<b>Name of antibody:</b>	MAP3K11
<b>Immunogen:</b>	Synthetic peptide of human MAP3K11

<b>Synonyms:</b>	MLK3; PTK1; SPRK; MLK-3; MEKK11
<b>SwissProt:</b>	Q16584
<b>ELISA Recommended dilution:</b>	5000-10000
<b>IHC positive control:</b>	Human tonsil and Human gastric cancer
<b>IHC Recommend dilution:</b>	50-100
<b>WB Predicted band size:</b>	93 kDa
<b>WB Positive control:</b>	LO2 and PC-3 cell lysates
<b>WB Recommended dilution:</b>	500-2000
<b>Full name:</b>	mitogen-activated protein kinase kinase kinase 11





**mlbio** 梅联生物  
Good elisakit producers