

兔抗 GPR78 多克隆抗体

中文名称: 兔抗 GPR78 多克隆抗体

英文名称: Anti-GPR78 rabbit polyclonal antibody

别名: G protein-coupled receptor 78

抗原: GPR78

储存: 冷冻 (-20℃)

宿主: Rabbit

反应种属: Human

相关类别: 一抗

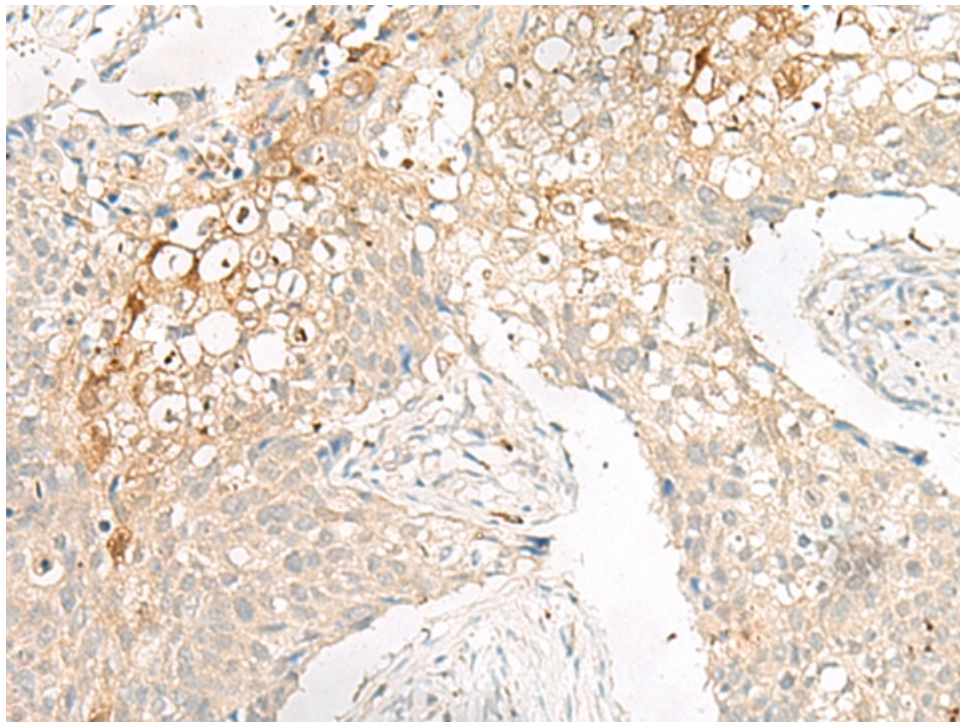
标记物: Unconjugate

克隆类型: rabbit polyclonal

技术规格

Background:	The protein encoded by this gene belongs to the G protein-coupled receptor family, which contain 7 transmembrane domains and transduce extracellular signals through heterotrimeric G proteins. This is an orphan receptor, which displays significant level of constitutive activity. Association analysis shows preliminary evidence for the involvement of this gene in susceptibility to bipolar affective disorder and schizophrenia. Alternatively spliced transcript variants have been found for this gene.
Applications:	ELISA, IHC

Name of antibody:	GPR78
Immunogen:	Synthetic peptide of human GPR78
Full name:	G protein-coupled receptor 78
SwissProt:	Q96P69
ELISA Recommended dilution:	5000-10000
IHC positive control:	Human lung cancer
IHC Recommend dilution:	20-100



mlbio 梅联生物
Good elisakit producers