

## 兔抗 HCRTR1 多克隆抗体

中文名称：兔抗 HCRTR1 多克隆抗体

英文名称：Anti-HCRTR1 rabbit polyclonal antibody

别名：OX1R

相关类别：一抗

储存：冷冻（-20℃）

宿主：Rabbit

抗原：HCRTR1

反应种属：Human, Mouse, Rat

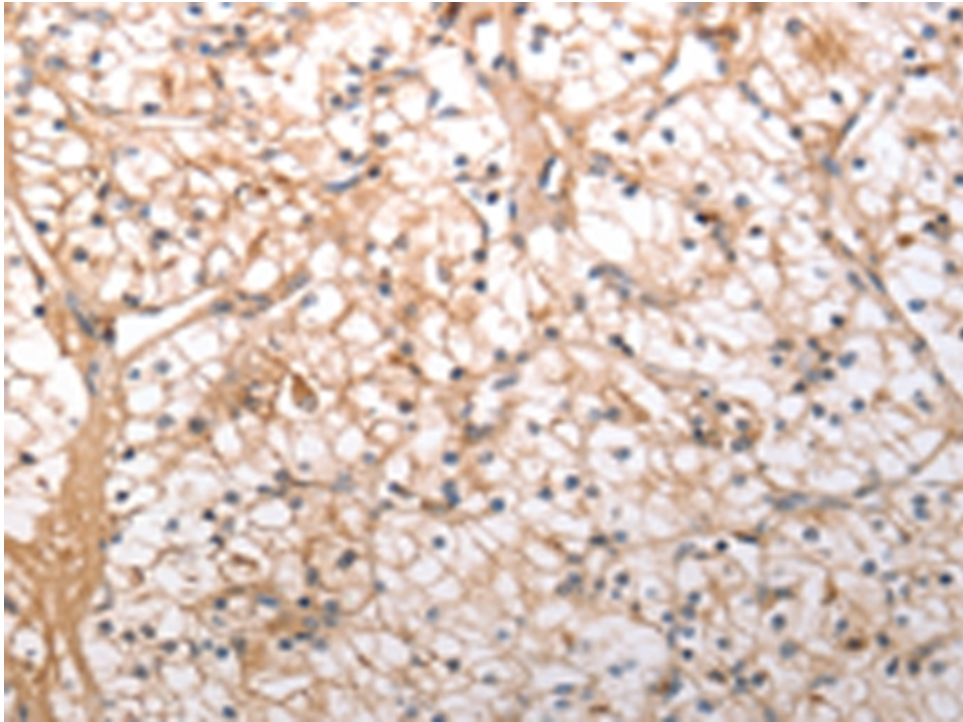
标记物：Unconjugate

克隆类型：rabbit polyclonal

### 技术规格

<b>Background:</b>	The protein encoded by this gene is a G-protein coupled receptor involved in the regulation of feeding behavior. The encoded protein selectively binds the hypothalamic neuropeptide orexin A. A related gene (HCRTR2) encodes a G-protein coupled receptor that binds orexin A and orexin B.
<b>Applications:</b>	ELISA, IHC
<b>Name of antibody:</b>	HCRTR1
<b>Immunogen:</b>	Synthetic peptide of human HCRTR1

<b>Full name:</b>	Hypocretin (orexin) receptor 1
<b>Synonyms :</b>	OX1R
<b>SwissProt:</b>	O43613
<b>ELISA Recommended dilution:</b>	2000-10000
<b>IHC positive control:</b>	Human colon cancer and Human liver cancer
<b>IHC Recommend dilution:</b>	50-200



**mlbio** 梅联生物  
Good elisakit producers