

## 兔抗 HEBP1 多克隆抗体

中文名称：兔抗 HEBP1 多克隆抗体

英文名称：Anti-HEBP1 rabbit polyclonal antibody

别名：heme binding protein 1; HBP; HEBP

相关类别：一抗

储存：冷冻（-20℃）

宿主：Rabbit

反应种属：Human

反应种属：Human

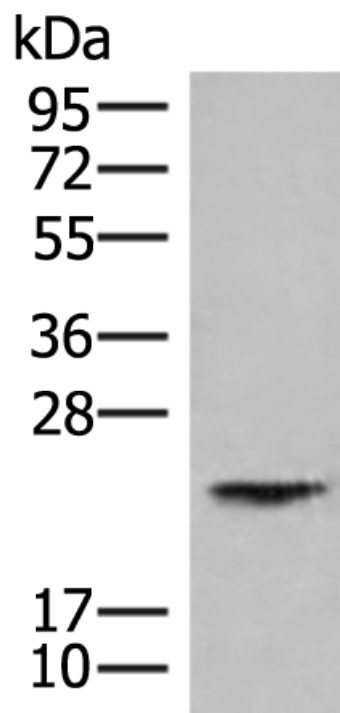
标记物：Unconjugate

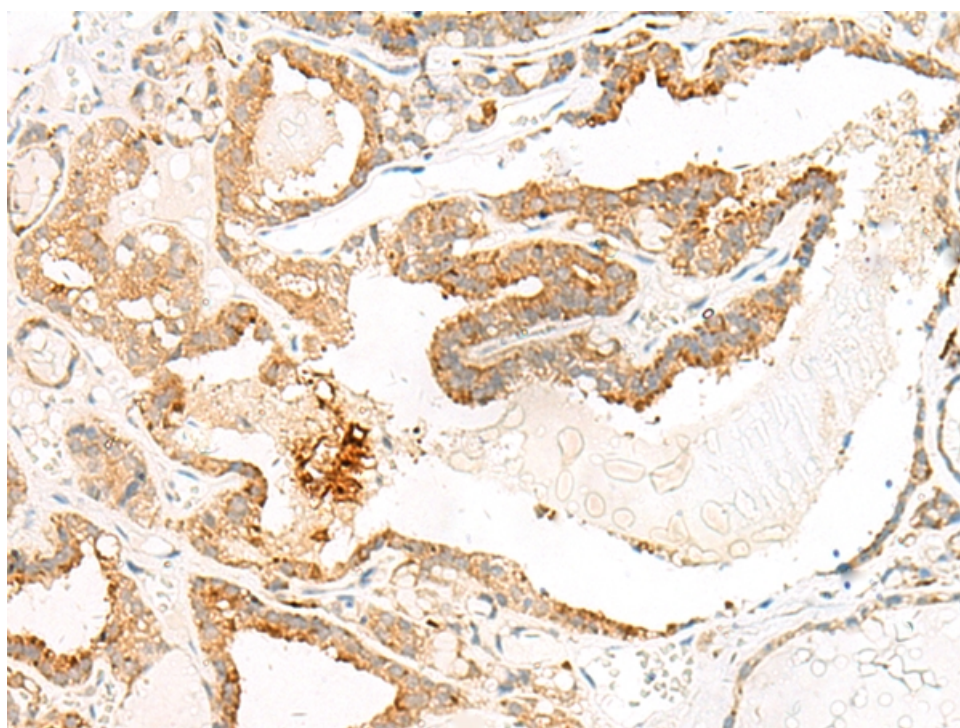
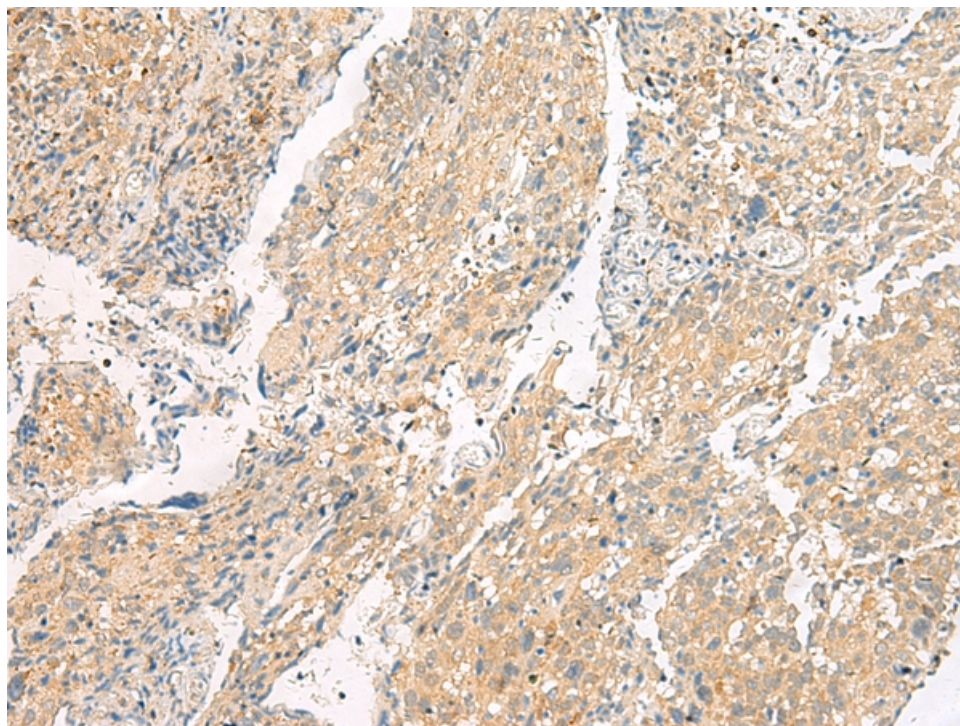
克隆类型：rabbit polyclonal

### 技术规格

<b>Background:</b>	The full-length protein encoded by this gene is an intracellular tetrapyrrole-binding protein. This protein includes a natural chemoattractant peptide of 21 amino acids at the N-terminus, which is a natural ligand for formyl peptide receptor-like receptor 2 (FPRL2) and promotes calcium mobilization and chemotaxis in monocytes and dendritic cells.
<b>Applications:</b>	ELISA, WB, IHC
<b>Name of antibody:</b>	HEBP1
<b>Immunogen:</b>	Synthetic peptide of human HEBP1
<b>Full name:</b>	heme binding protein 1
<b>Synonyms:</b>	HBP; HEBP

<b>SwissProt:</b>	Q9NRV9
<b>ELISA Recommended dilution:</b>	5000-10000
<b>IHC positive control:</b>	Human cervical cancer and Human thyroid cancer
<b>IHC Recommend dilution:</b>	50-300
<b>WB Predicted band size:</b>	21 kDa
<b>WB Positive control:</b>	Human kidney tissue lysate
<b>WB Recommended dilution:</b>	500-2000





**mlbio** 梅联生物  
Good elisakit producers