

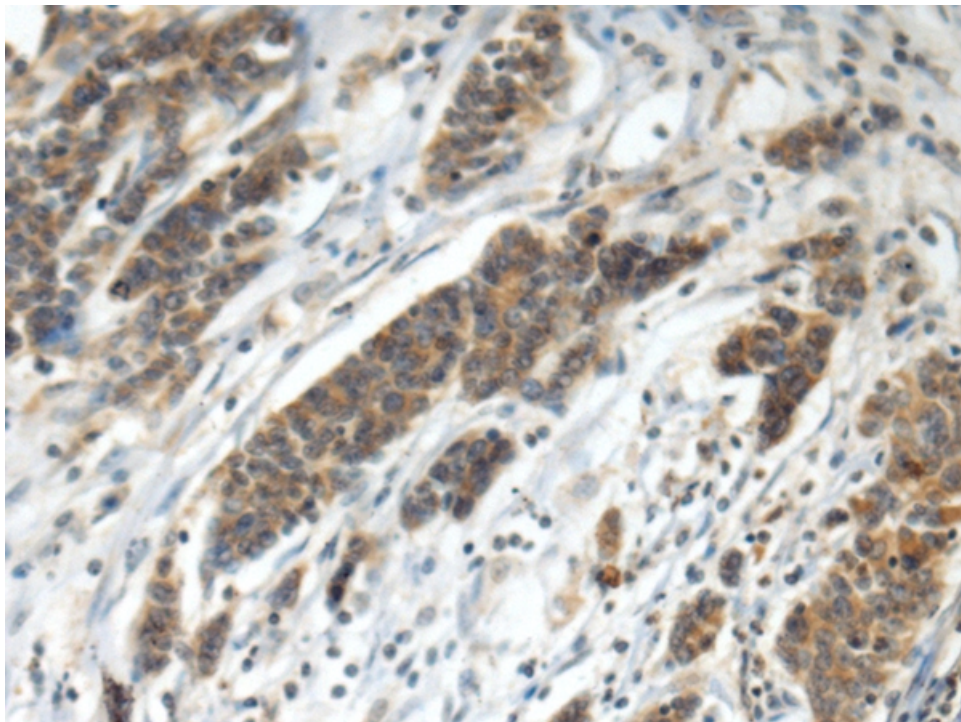
## 兔抗 HEPH 多克隆抗体

- 中文名称：兔抗 HEPH 多克隆抗体
- 英文名称：Anti-HEPH rabbit polyclonal antibody
- 别名：hephaestin; CPL
- 相关类别：一抗
- 储存：冷冻（-20℃）
- 宿主：Rabbit
- 抗原：HEPH
- 反应种属：Human, Mouse, Rat
- 标记物：Unconjugate
- 克隆类型：rabbit polyclonal

### 技术规格

<b>Background:</b>	This gene encodes a member of the multicopper oxidase protein family. The encoded protein is involved in the transport of dietary iron from epithelial cells of the intestinal lumen into the circulatory system, and may be involved in copper transport and homeostasis. In mouse, defects in this gene can lead to severe microcytic anemia. Alternative splicing results in multiple transcript variants. [provided by RefSeq, Aug 2013]
<b>Applications:</b>	ELISA, IHC

<b>Name of antibody:</b>	HEPH
<b>Immunogen:</b>	Fusion protein of human HEPH
<b>Full name:</b>	hephaestin
<b>Synonyms:</b>	CPL
<b>SwissProt:</b>	Q9BQS7
<b>ELISA Recommended dilution:</b>	5000-10000
<b>IHC positive control:</b>	Human colorectal cancer
<b>IHC Recommend dilution:</b>	100-300



**mlbio** 梅联生物  
Good elisakit producers