

兔抗 MCM4 多克隆抗体

中文名称：兔抗 MCM4 多克隆抗体

英文名称：Anti-MCM4 rabbit polyclonal antibody

别名：CDC21, CDC54, hCdc21, P1-CDC21

相关类别：一抗

储存：冷冻（-20℃）

宿主：Rabbit

抗原：MCM4

反应种属：Human, Mouse

标记物：Unconjugate

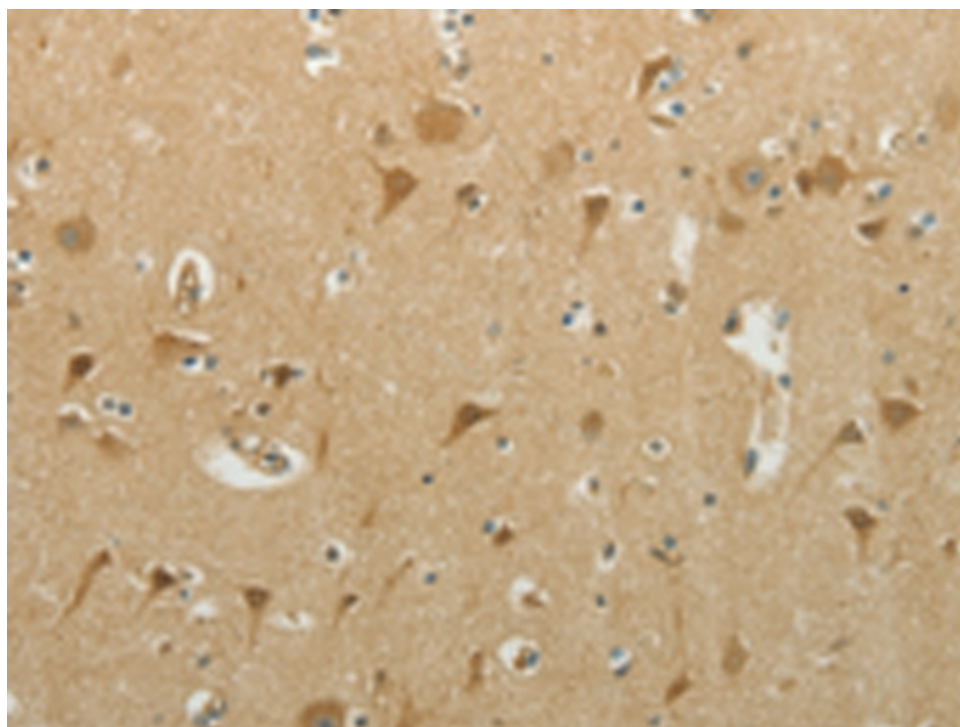
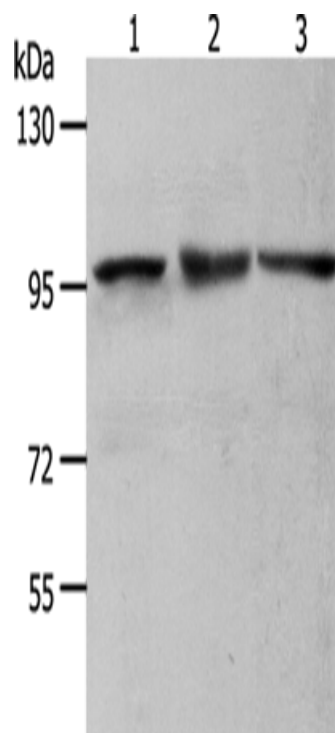
克隆类型：rabbit polyclonal

技术规格

Background:

The protein encoded by this gene is one of the highly conserved mini-chromosome maintenance proteins (MCM) that are essential for the initiation of eukaryotic genome replication. The hexameric protein complex formed by MCM proteins is a key component of the pre-replication complex (pre-RC) and may be involved in the formation of replication forks and in the recruitment of other DNA replication related proteins. The MCM complex consisting of this protein and MCM2, 6 and 7 proteins possesses DNA helicase activity, and may act as a DNA unwinding enzyme. The phosphorylation of this protein by CDC2 kinase reduces t

	<p>he DNA helicase activity and chromatin binding of the MCM complex. This gene is mapped to a region on the chromosome 8 head-to-head next to the PRKDC/DNA-PK, a DNA-activated protein kinase involved in the repair of DNA double-strand breaks. Alternatively spliced transcript variants encoding the same protein have been reported.</p>
Applications:	ELISA, WB, IHC
Name of antibody:	MCM4
Immunogen:	Synthetic peptide of human MCM4
Full name:	Minichromosome maintenance complex component 4
Synonyms :	CDC21, CDC54, hCdc21, P1-CDC21
SwissProt:	P33991
ELISA Recommended dilution:	1000-5000
IHC positive control:	Human brain and Human breast cancer
IHC Recommend dilution:	50-200
WB Predicted band size:	97 kDa
WB Positive control:	NIH/3T3, HeLa and K562 cells
WB Recommended dilution:	500-2000



mlbio 梅联生物
Good elisakit producers