

兔抗 HLA-G 多克隆抗体

中文名称: 兔抗 HLA-G 多克隆抗体

英文名称: Anti-HLA-G rabbit polyclonal antibody

别名: major histocompatibility complex, class I, G; MHC-G

储存: 冷冻 (-20℃)

抗原: HLA-G

宿主: Rabbit

相关类别: 一抗

反应种属: Human

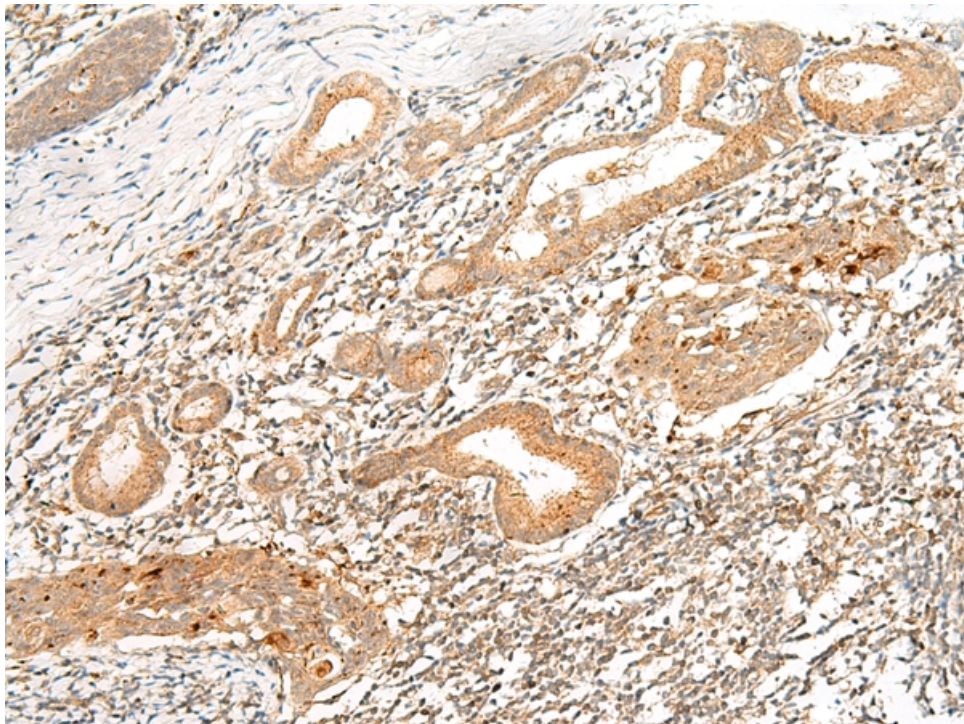
标记物: Unconjugate

克隆类型: rabbit polyclonal

技术规格

Background:	HLA-G belongs to the HLA class I heavy chain paralogues. This class I molecule is a heterodimer consisting of a heavy chain and a light chain (beta-2 microglobulin). The heavy chain is anchored in the membrane. HLA-G is expressed on fetal derived placental cells. The heavy chain is approximately 45 kDa and its gene contains 8 exons. Exon one encodes the leader peptide, exons 2 and 3 encode the alpha1 and alpha2 domain, which both bind the peptide, exon 4 encodes the alpha3 domain, exon 5 encodes the transmembrane region, and exon 6 encodes the cytoplasmic tail.
Applications:	ELISA, IHC

Name of antibody:	HLA-G
Immunogen:	Synthetic peptide of human HLA-G
Full name:	major histocompatibility complex, class I, G
Synonyms:	MHC-G
SwissProt:	P17693
ELISA Recommended dilution:	5000-10000
IHC positive control:	Human esophagus cancer
IHC Recommend dilution:	50-300



mlbio 梅联生物
Good elisakit producers