

兔抗 GABBR1 多克隆抗体

中文名称：兔抗 GABBR1 多克隆抗体

英文名称：Anti-GABBR1 rabbit polyclonal antibody

别名：GB1; GPRC3A; GABABR1; GABBR1-3; dJ271M21.1.1.1; dJ271M21.1.2

相关类别：一抗

储存：冷冻（-20℃）

宿主：Rabbit

抗原：GABBR1

反应种属：Human, Mouse, Rat

标记物：Unconjugate

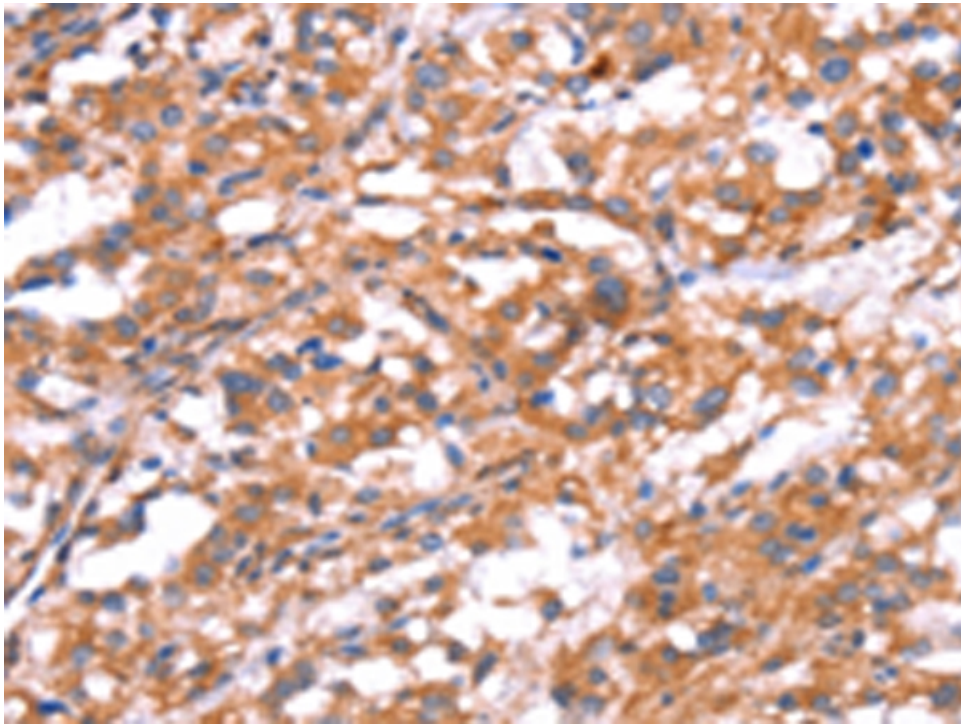
克隆类型：rabbit polyclonal

技术规格

Background:

Gamma-aminobutyric acid (GABA) is the main inhibitory neurotransmitter in the mammalian central nervous system. GABA exerts its effects through ionotropic [GABA(A/C)] receptors, to produce fast synaptic inhibition, and metabotropic [GABA(B)] receptors, to produce slow, prolonged inhibitory signals. The GABA (B) receptor consists of a heterodimer of two related 7-transmembrane receptors, GABA(B) receptor 1 and GABA(B) receptor 2. The GABA(B) receptor 1 gene is mapped to chromosome 6p21.3 within the HLA class I region close to the HLA-F gene. Susceptibility

	loci for multiple sclerosis, epilepsy, and schizophrenia have also been mapped in this region. Alternative splicing of this gene generates multiple transcript variants.
Applications:	ELISA, IHC
Name of antibody:	GABBR1
Immunogen:	Synthetic peptide of human GABBR1
Full name:	gamma-aminobutyric acid (GABA) B receptor, 1
Synonyms :	GB1; GPRC3A; GABABR1; GABBR1-3; dJ271M21.1.1; dJ271M21.1.2
SwissProt:	Q9UBS5
ELISA Recommended dilution:	1000-2000
IHC positive control:	Human thyroid cancer
IHC Recommend dilution:	25-100



mlbio 梅联生物
Good elisakit producers