

兔抗 GTF2H2 多克隆抗体

中文名称：兔抗 GTF2H2 多克隆抗体

英文名称：Anti-GTF2H2 rabbit polyclonal antibody

别名：p44; BTF2; TFIIH; BTF2P44; T-BTF2P44

抗原：GTF2H2

相关类别：一抗

储存：冷冻（-20℃）

宿主：Rabbit

反应种属：Human, Mouse, Rat

标记物：Unconjugate

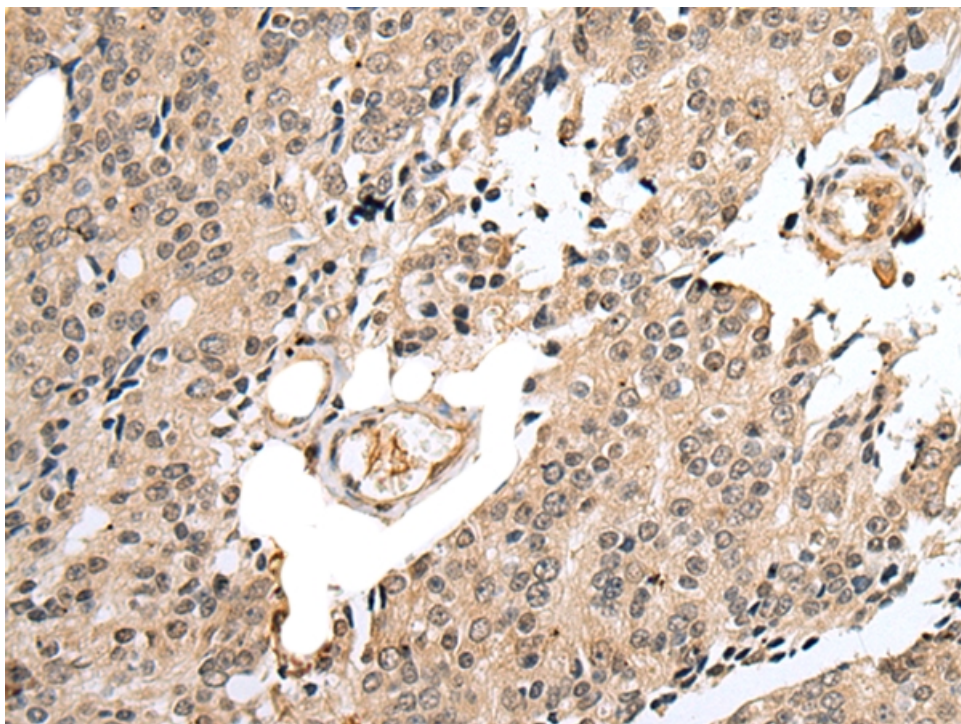
克隆类型：rabbit polyclonal

技术规格

Background:

This gene is part of a 500 kb inverted duplication on chromosome 5q13. This duplicated region contains at least four genes and repetitive elements which make it prone to rearrangements and deletions. The repetitiveness and complexity of the sequence have also caused difficulty in determining the organization of this genomic region. This gene is within the telomeric copy of the duplication. Deletion of this gene sometimes accompanies deletion of the neighboring SMN1 gene in spinal muscular atrophy (SMA) patients but it is unclear if deletion of this gene contributes to the SMA phenotype. This gene encode

	<p>s the 44 kDa subunit of RNA polymerase II transcription initiation factor IIH which is involved in basal transcription and nucleotide excision repair. Transcript variants for this gene have been described, but their full length nature has not been determined. A second copy of this gene within the centromeric copy of the duplication has been described in the literature. It is reported to be different by either two or four base pairs; however, no sequence data is currently available for the centromeric copy of the gene.</p>
Applications:	ELISA, IHC
Name of antibody:	GTF2H2
Immunogen:	Fusion protein of human GTF2H2
Full name:	general transcription factor IIH, polypeptide 2, 44kDa
Synonyms :	p44; BTF2; TFIIH; BTF2P44; T-BTF2P44
SwissProt:	Q13888
ELISA Recommended dilution:	5000-10000
IHC positive control:	Human prostate cancer and Human brain
IHC Recommend dilution:	25-100



mlbio 梅联生物
Good elisakit producers