

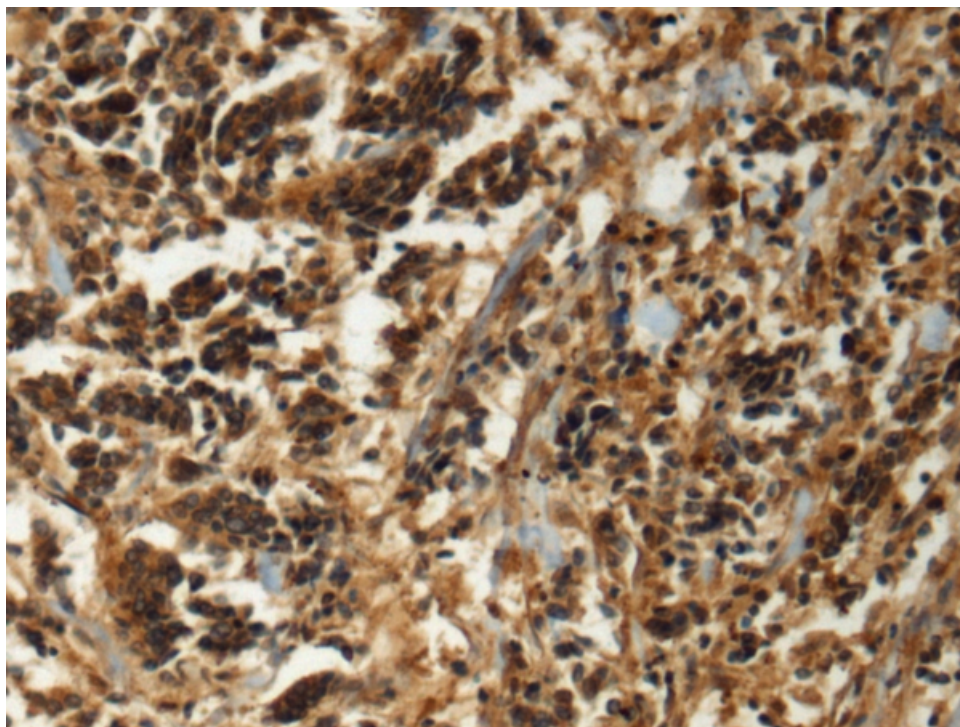
## 兔抗 GAN 多克隆抗体

- 中文名称：兔抗 GAN 多克隆抗体
- 英文名称：Anti-GAN rabbit polyclonal antibody
- 别名：gigaxonin; GAN1; KLHL16
- 相关类别：一抗
- 储存：冷冻（-20℃）
- 宿主：Rabbit
- 抗原：GAN
- 反应种属：Human, Mouse
- 标记物：Unconjugate
- 克隆类型：rabbit polyclonal

### 技术规格

<b>Background:</b>	This gene encodes a member of the cytoskeletal BTB/kelch (Broad-Complex, Tramtrack and Bric a brac) repeat family. The encoded protein plays a role in neurofilament architecture and is involved in mediating the ubiquitination and degradation of some proteins. Defects in this gene are a cause of giant axonal neuropathy (GAN). [provided by RefSeq, Oct 2008]
<b>Applications:</b>	ELISA, IHC
<b>Name of antibody:</b>	GAN
<b>Immunogen:</b>	Fusion protein of human GAN
<b>Full name:</b>	gigaxonin

<b>Synonyms:</b>	GAN1; KLHL16
<b>SwissProt:</b>	Q9H2C0
<b>ELISA Recommended dilution:</b>	5000-10000
<b>IHC positive control:</b>	Human breast cancer
<b>IHC Recommend dilution:</b>	150-300



**mlbio** 梅联生物  
Good elisakit producers