

兔抗 GUCY1A1 多克隆抗体

中文名称：兔抗 GUCY1A1 多克隆抗体

英文名称： Anti-GUCY1A1 rabbit polyclonal antibody

别名： guanylate cyclase 1 soluble subunit alpha 1; GUCA3

相关类别： 一抗

储存： 冷冻 (-20℃)

抗原： GUCY1A1

宿主： Rabbit

反应种属： Human, Mouse, Rat

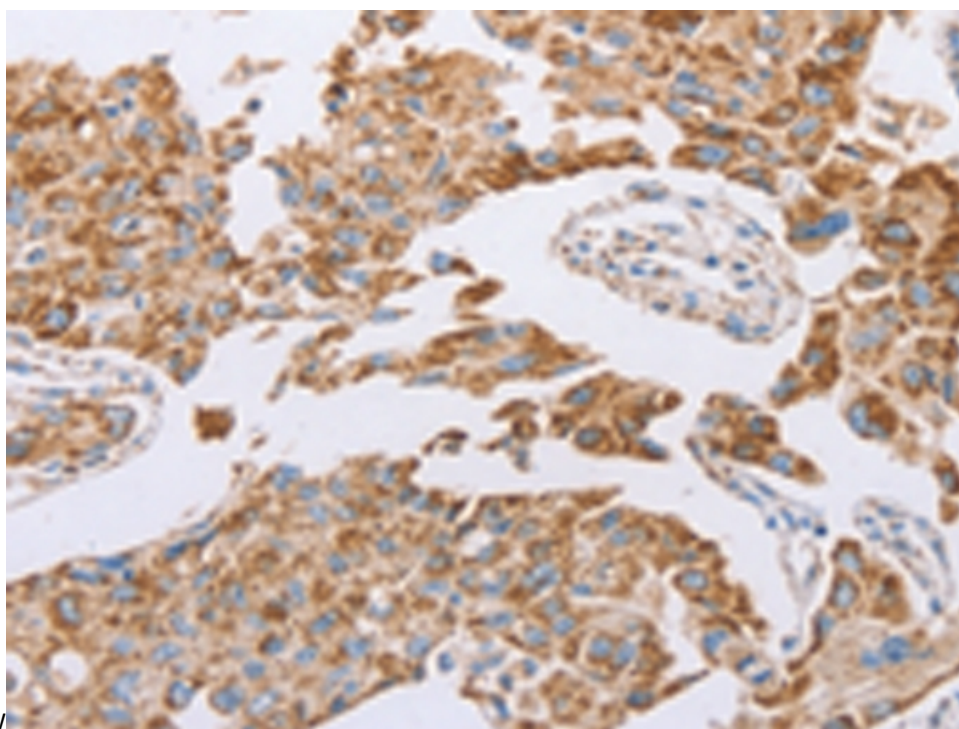
标记物： Unconjugate

克隆类型： rabbit polyclonal

技术规格

Background:	Soluble guanylate cyclases are heterodimeric proteins that catalyze the conversion of GTP to 3',5'-cyclic GMP and pyrophosphate. The protein encoded by this gene is an alpha subunit of this complex and it interacts with a beta subunit to form the guanylate cyclase enzyme, which is activated by nitric oxide. Several transcript variants encoding a few different isoforms have been found for this gene. [provided by RefSeq, Jan 2012]
Applications:	ELISA, IHC
Name of antibody:	GUCY1A1
Immunogen:	Fusion protein of human GUCY1A1

Full name:	guanylate cyclase 1 soluble subunit alpha 1
Synonyms:	GUCA3; MYMY6; GC-SA3; GUC1A3; GUCSA3; GUCY1A3
SwissProt:	Q02108
IHC positive control:	Human lung cancer and Human thyroid cancer
IHC Recommend dilution:	25-100



W