

## 兔抗 GUCY1B1 多克隆抗体

中文名称：兔抗 GUCY1B1 多克隆抗体

英文名称：Anti-GUCY1B1 rabbit polyclonal antibody

别名：guanylate cyclase 1 soluble subunit beta 1; GUCB3; GC-SB3; GUC1B3; GUCSB3; GUCY1B3;

相关类别：一抗

储存：冷冻 (-20℃)

宿主：Rabbit

抗原：GUCY1B1

反应种属：Human, Mouse, Rat

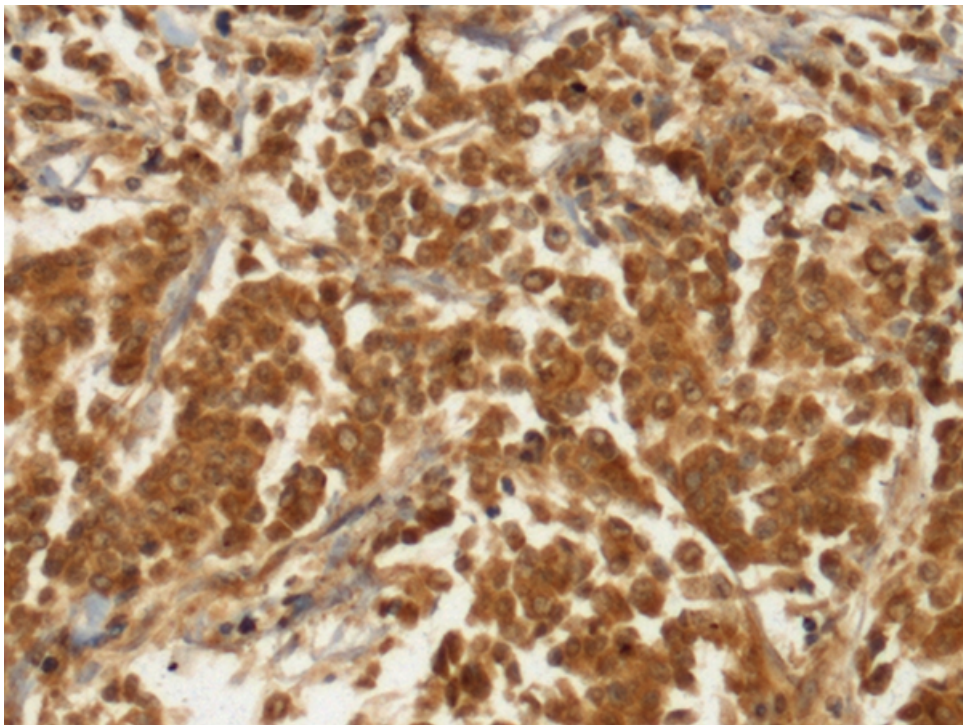
标记物：Unconjugate

克隆类型：rabbit polyclonal

### 技术规格

<b>Background:</b>	This gene encodes the beta subunit of the soluble guanylate cyclase (sGC), which catalyzes the conversion of GTP (guanosine triphosphate) to cGMP (cyclic guanosine monophosphate). The encoded protein contains an HNOX domain, which serves as a receptor for ligands such as nitric oxide, oxygen and nitrovasodilator drugs. Alternative splicing results in multiple transcript variants. [provided by RefSeq, May 2014]
<b>Applications:</b>	ELISA, IHC
<b>Name of antibody:</b>	GUCY1B1

<b>Immunogen:</b>	Fusion protein of human GUCY1B1
<b>Full name:</b>	guanylate cyclase 1 soluble subunit beta 1
<b>Synonyms:</b>	GUCB3; GC-SB3; GUC1B3; GUCSB3; GUCY1B3; GC-S-beta-1
<b>SwissProt:</b>	Q02153
<b>IHC positive control:</b>	Human breast cancer
<b>IHC Recommend dilution:</b>	150-300



**mlbio** 梅联生物  
Good elisakit producers