

## 兔抗 MRGPRD 多克隆抗体

中文名称: 兔抗 MRGPRD 多克隆抗体

英文名称: Anti-MRGPRD rabbit polyclonal antibody

别名: MAS related GPR family member D; MRGD; TGR7

抗原: MRGPRD

储存: 冷冻 (-20℃)

宿主: Rabbit

相关类别: 一抗

反应种属: Human

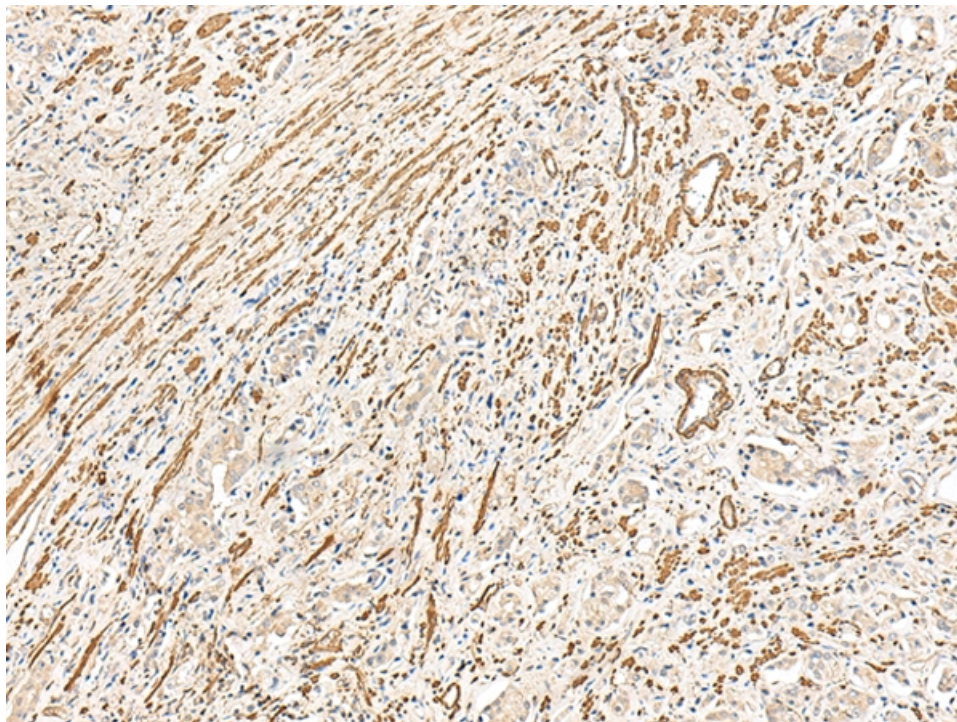
标记物: Unconjugate

克隆类型: rabbit polyclonal

### 技术规格

<b>Background:</b>	May regulate nociceptor function and/or development, including the sensation or modulation of pain. Functions as a specific membrane receptor for beta-alanine. Beta-alanine at micromolar doses specifically evoked Ca <sup>2+</sup> influx in cells expressing the receptor. Beta-alanine decreases forskolin-stimulated cAMP production in cells expressing the receptor, suggesting that the receptor couples with G-protein G(q) and G(i).
<b>Applications:</b>	ELISA, IHC
<b>Name of antibody:</b>	MRGPRD
<b>Immunogen:</b>	Synthetic peptide of human MRGPRD

<b>Full name:</b>	MAS related GPR family member D
<b>Synonyms:</b>	MRGD; TGR7
<b>SwissProt:</b>	Q8TDS7
<b>ELISA Recommended dilution:</b>	5000-10000
<b>IHC positive control:</b>	Human prostate cancer
<b>IHC Recommend dilution:</b>	25-100



**mlbio** 梅联生物  
Good elisakit producers