

兔抗 GAS8 多克隆抗体

中文名称：兔抗 GAS8 多克隆抗体

英文名称：Anti-GAS8 rabbit polyclonal antibody

别名：GAS11

相关类别：一抗

储存：冷冻（-20℃）

宿主：Rabbit

抗原：GAS8

反应种属：Human, Mouse, Rat

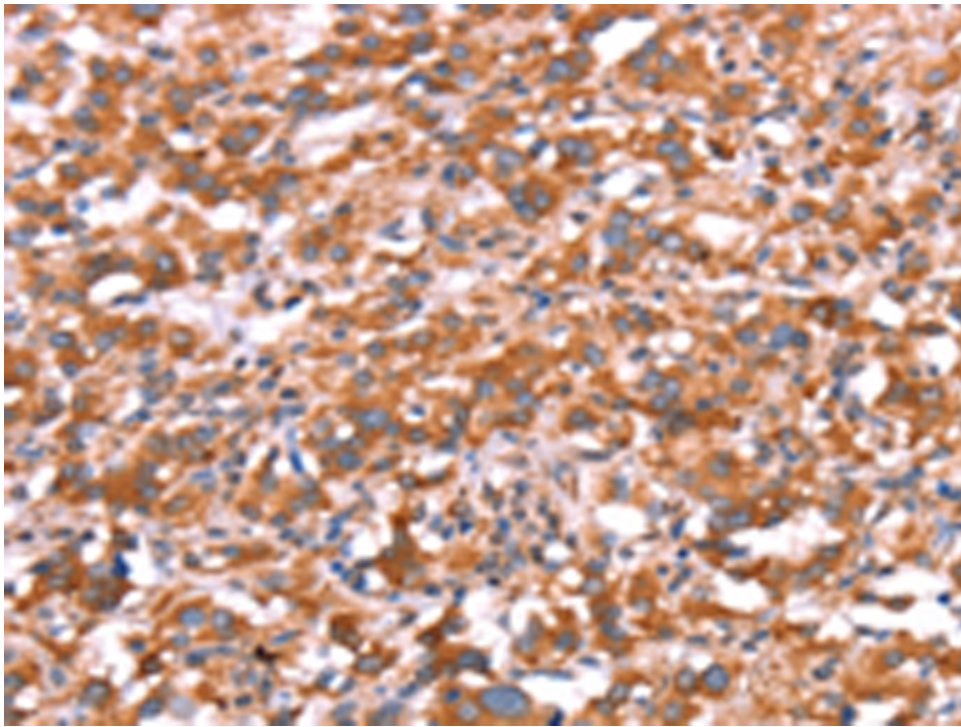
标记物：Unconjugate

克隆类型：rabbit polyclonal

技术规格

Background:	This gene includes 11 exons spanning 25 kb and maps to a region of chromosome 16 that is sometimes deleted in breast and prostate cancer. The second intron contains an apparently intronless gene, C16orf3, that is transcribed in the opposite orientation. This gene is a putative tumor suppressor gene. Several transcript variants encoding different isoforms have been found for this gene.
Applications:	ELISA, IHC
Name of antibody:	GAS8
Immunogen:	Synthetic peptide of human GAS8

Full name:	growth arrest-specific 8
Synonyms :	GAS11
SwissProt:	O95995
ELISA Recommended dilution:	1000-2000
IHC positive control:	Human thyroid cancer and Human gastric cancer
IHC Recommend dilution:	25-100



mlbio 梅联生物
Good elisakit producers