

## 兔抗 HPDL 多克隆抗体

中文名称：兔抗 HPDL 多克隆抗体

英文名称：Anti-HPDL rabbit polyclonal antibody

别名：4-hydroxyphenylpyruvate dioxygenase like; GLOXD1; 4-HPPD-L

相关类别：一抗

储存：冷冻（-20℃）

宿主：Rabbit

抗原：HPDL

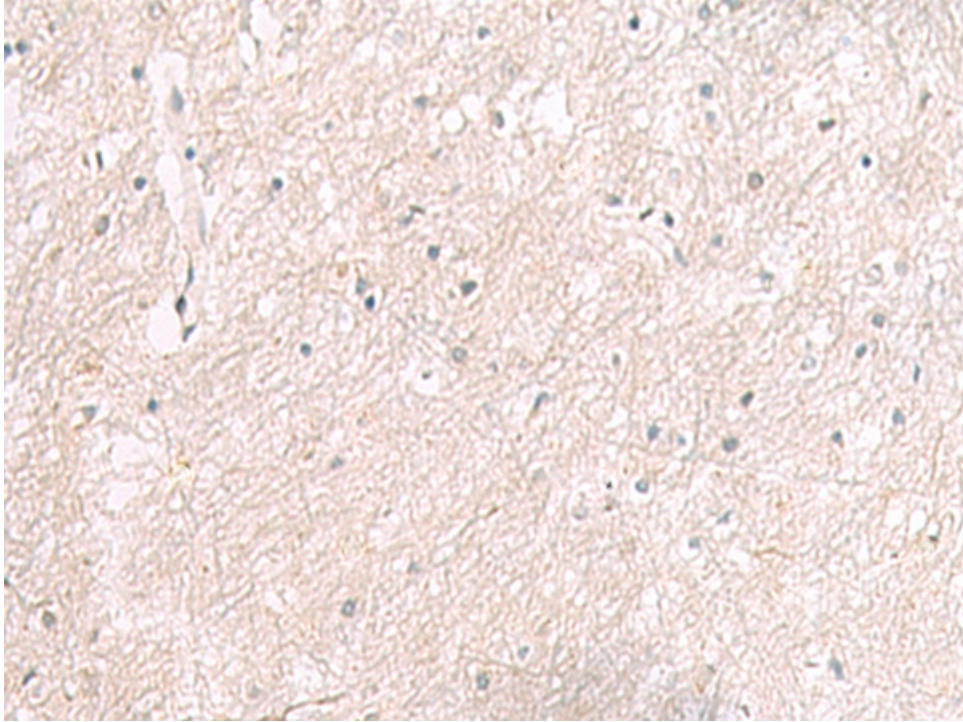
反应种属：Human

标记物：Unconjugate

克隆类型：rabbit polyclonal

### 技术规格

<b>Background:</b>	May have dioxygenase activity.
<b>Applications:</b>	ELISA, IHC
<b>Name of antibody:</b>	HPDL
<b>Immunogen:</b>	Synthetic peptide of human HPDL
<b>Full name:</b>	4-hydroxyphenylpyruvate dioxygenase like
<b>Synonyms:</b>	GLOXD1; 4-HPPD-L
<b>SwissProt:</b>	Q96IR7
<b>ELISA Recommended dilution:</b>	5000-10000
<b>IHC positive control:</b>	Human tonsil and Human brain
<b>IHC Recommend dilution:</b>	25-100



**mlbio** 梅联生物  
Good elisakit producers

