

## 兔抗 MS4A1 多克隆抗体

中文名称: 兔抗 MS4A1 多克隆抗体

英文名称: Anti-MS4A1 rabbit polyclonal antibody

别名: membrane spanning 4-domains A1; B1; S7; Bp35; CD20; CVID5; MS4A2; LEU-16

抗原: MS4A1

储存: 冷冻 (-20℃)

宿主: Rabbit

反应种属: Human

相关类别: 一抗

标记物: Unconjugate

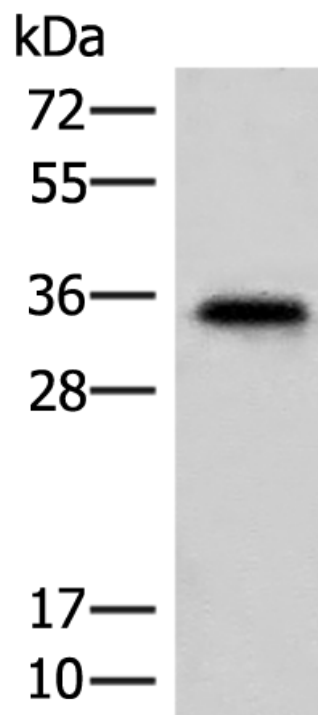
克隆类型: rabbit polyclonal

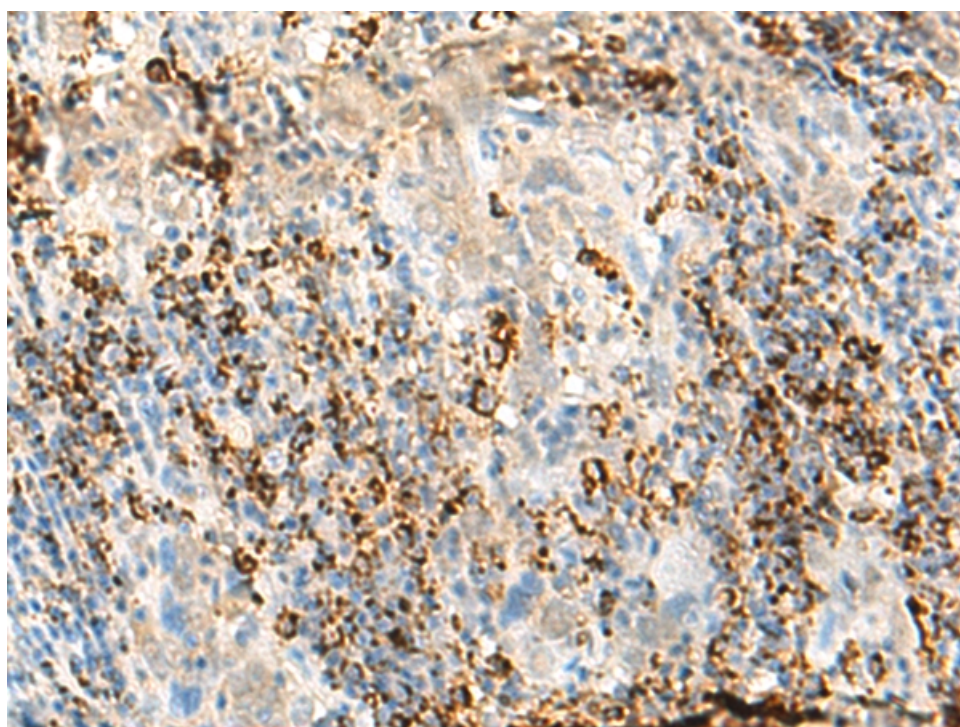
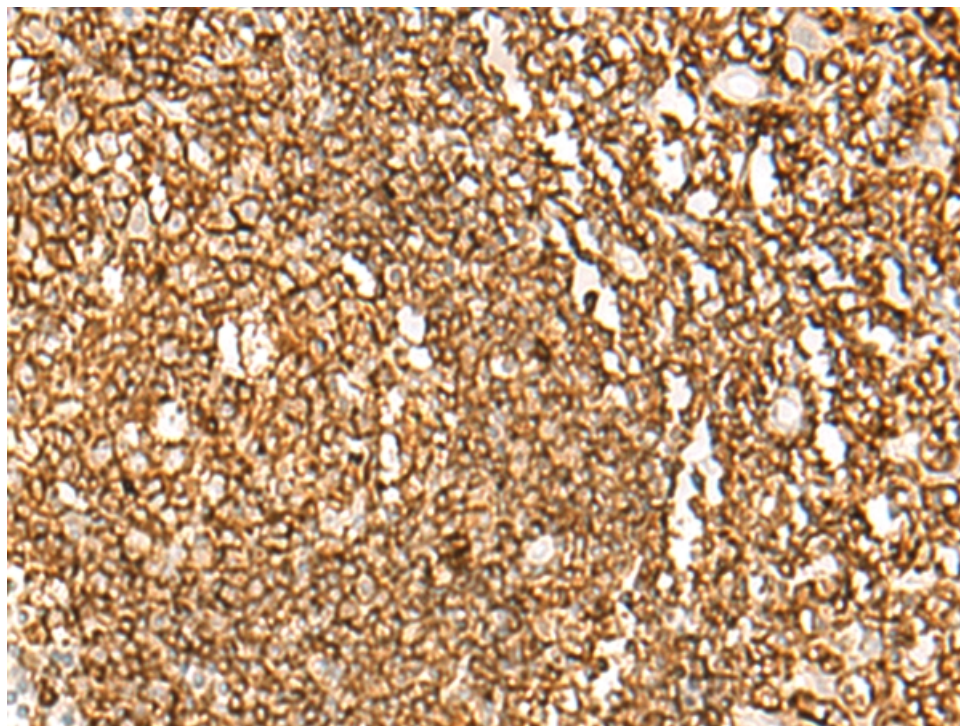
### 技术规格

#### Background:

This gene encodes a member of the membrane-spanning 4A gene family. Members of this nascent protein family are characterized by common structural features and similar intron/exon splice boundaries and display unique expression patterns among hematopoietic cells and nonlymphoid tissues. This gene encodes a B-lymphocyte surface molecule which plays a role in the development and differentiation of B-cells into plasma cells. This family member is localized to 11q12, among a cluster of family members. Alternative splicing of this gene results in two transcript variants which encode the same protein.

<b>Applications:</b>	ELISA, WB, IHC
<b>Name of antibody:</b>	MS4A1
<b>Immunogen:</b>	Synthetic peptide of human MS4A1
<b>Full name:</b>	membrane spanning 4-domains A1
<b>Synonyms:</b>	B1; S7; Bp35; CD20; CVID5; MS4A2; LEU-16
<b>SwissProt:</b>	P11836
<b>ELISA Recommended dilution:</b>	5000-10000
<b>IHC positive control:</b>	Human tonsil and Human cervical cancer
<b>IHC Recommend dilution:</b>	30-150
<b>WB Predicted band size:</b>	33 kDa
<b>WB Positive control:</b>	Raji cell lysate
<b>WB Recommended dilution:</b>	200-1000





**mlbio** 梅联生物  
Good elisakit producers