

兔抗 GCSAM 多克隆抗体

中文名称：兔抗 GCSAM 多克隆抗体

英文名称：Anti-GCSAM rabbit polyclonal antibody

别名：HGAL; GCAT2; GCET2

相关类别：一抗

储存：冷冻（-20℃）

宿主：Rabbit

抗原：GCSAM

反应种属：Human

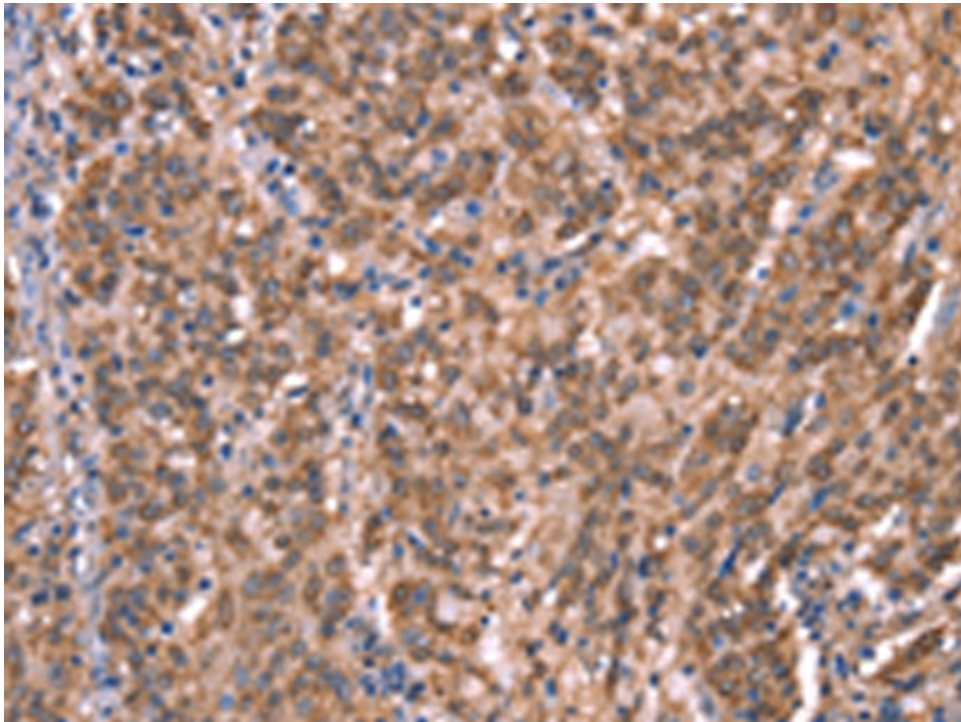
标记物：Unconjugate

克隆类型：rabbit polyclonal

技术规格

Background:	This gene encodes a protein which may function in signal transduction pathways and whose expression is elevated in germinal cell lymphomas. It contains a putative PDZ-interacting domain, an immunoreceptor tyrosine-based activation motif (ITAM), and two putative SH2 binding sites. In B cells, its expression is specifically induced by interleukin-4. Alternative splicing results in multiple transcript variants encoding different isoforms.
Applications:	ELISA, IHC
Name of antibody:	GCSAM
Immunogen:	Synthetic peptide of human GCSAM

Full name:	germinal center-associated, signaling and motility
Synonyms:	HGAL; GCAT2; GCET2
SwissProt:	Q8N6F7
IHC positive control:	Human gastric cancer and human liver cancer
IHC Recommend dilution:	50-200



mlbio 酶联生物
Good elisakit producers