

兔抗 PTPRA 多克隆抗体

中文名称：兔抗 PTPRA 多克隆抗体

英文名称：Anti-PTPRA rabbit polyclonal antibody

别名：LRP; HLPR; PTPA; HEPTP; HPTPA; RPTPA; PTPRL2; HPTPalpha; R-PTP-alpha

储存：冷冻（-20℃）

抗原：PTPRA

宿主：Rabbit

反应种属：Human, Mouse, Rat

相关类别：一抗

标记物：Unconjugate

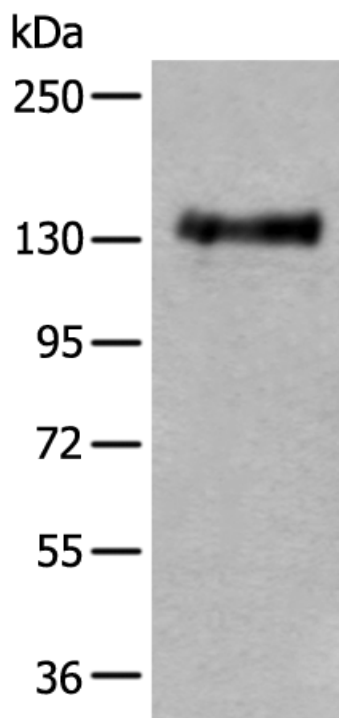
隆类型：rabbit polyclonal

技术规格

Background:

The protein encoded by this gene is a member of the protein tyrosine phosphatase (PTP) family. PTPs are known to be signaling molecules that regulate a variety of cellular processes including cell growth, differentiation, mitotic cycle, and oncogenic transformation. This PTP contains an extracellular domain, a single transmembrane segment and two tandem intracytoplasmic catalytic domains, and thus represents a receptor-type PTP. This PTP has been shown to dephosphorylate and activate Src family tyrosine kinase.

	ses, and is implicated in the regulation of integrin signaling, cell adhesion and proliferation. Three alternatively spliced variants of this gene, which encode two distinct isoforms, have been reported.
Applications:	ELISA, WB
Name of antibody:	PTPRA
Immunogen:	Fusion protein of human PTPRA
Full name:	protein tyrosine phosphatase, receptor type A
Synonyms:	LRP; HLPR; PTPA; HEPTP; HPTPA; RPTPA; PTPRL2; HPTPalpha; R-PTP-alpha
SwissProt:	P18433
ELISA Recommended dilution:	5000-10000
WB Predicted band size:	91 kDa
WB Positive control:	Mouse brain tissue lysate
WB Recommended dilution:	500-2000



mlbio 酶联生物
Good elisakit producers