

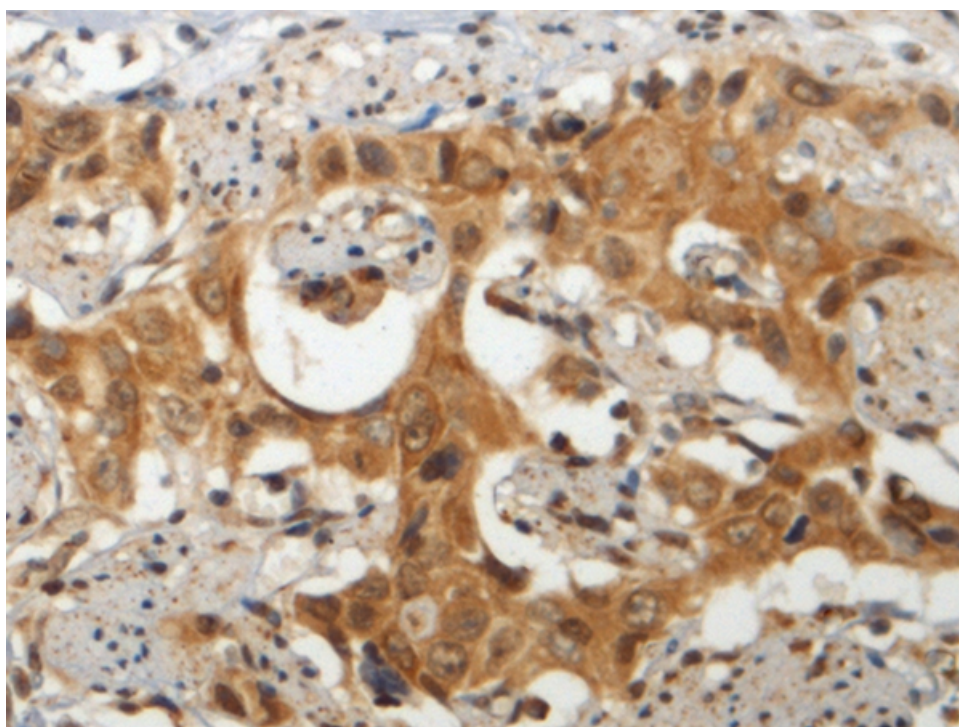
## 兔抗 GEMIN6 多克隆抗体

中文名称:	兔抗 GEMIN6 多克隆抗体
英文名称:	Anti-GEMIN6 rabbit polyclonal antibody
别名:	gem nuclear organelle associated protein 6
相关类别:	一抗
储存:	冷冻 (-20℃)
宿主:	Rabbit
抗原:	GEMIN6
反应种属:	Human, Mouse
标记物:	Unconjugate
克隆类型:	rabbit polyclonal

### 技术规格

<b>Background:</b>	GEMIN6 is part of a large macromolecular complex, localized to both the cytoplasm and the nucleus, that plays a role in the cytoplasmic assembly of small nuclear ribonucleoproteins (snRNPs). Other members of this complex include SMN (MIM 600354), GEMIN2 (SIP1; MIM 602595), GEMIN3 (DDX20; MIM 606168), GEMIN4 (MIM 606969), and GEMIN5 (MIM 607005).[supplied by OMIM, Jul 2002]
<b>Applications:</b>	ELISA, IHC
<b>Name of antibody:</b>	GEMIN6
<b>Immunogen:</b>	Fusion protein of human GEMIN6

<b>Full name:</b>	gem nuclear organelle associated protein 6
<b>SwissProt:</b>	Q8WXD5
<b>ELISA Recommended dilution:</b>	5000-10000
<b>IHC positive control:</b>	Human esophagus cancer
<b>IHC Recommend dilution:</b>	150-300



**mlbio** 梅联生物  
Good elisakit producers