

兔抗 TSC22D1 多克隆抗体

中文名称：兔抗 TSC22D1 多克隆抗体

英文名称： Anti-TSC22D1 rabbit polyclonal antibody

别名： Ptg-2; TSC22; TGFB1I4

相关类别： 一抗

储存： 冷冻（-20℃） 避光

宿主： Rabbit

抗原： TSC22D1

反应种属： Human Mouse Rat

标记物： Unconjugate

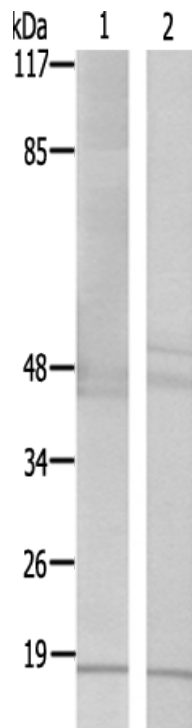
克隆类型： Unconjugate

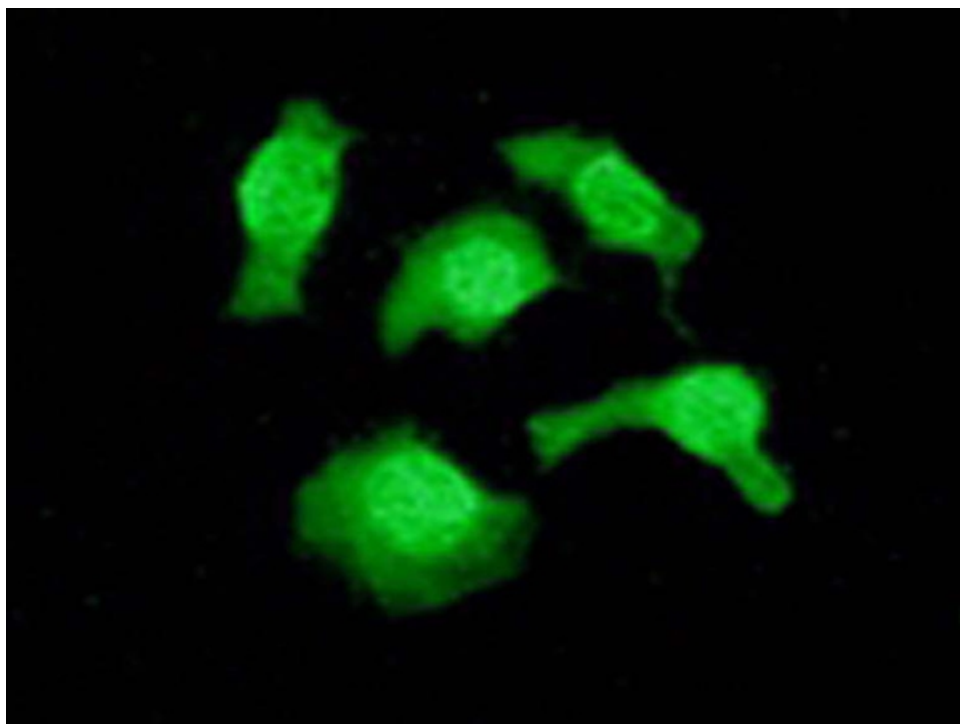
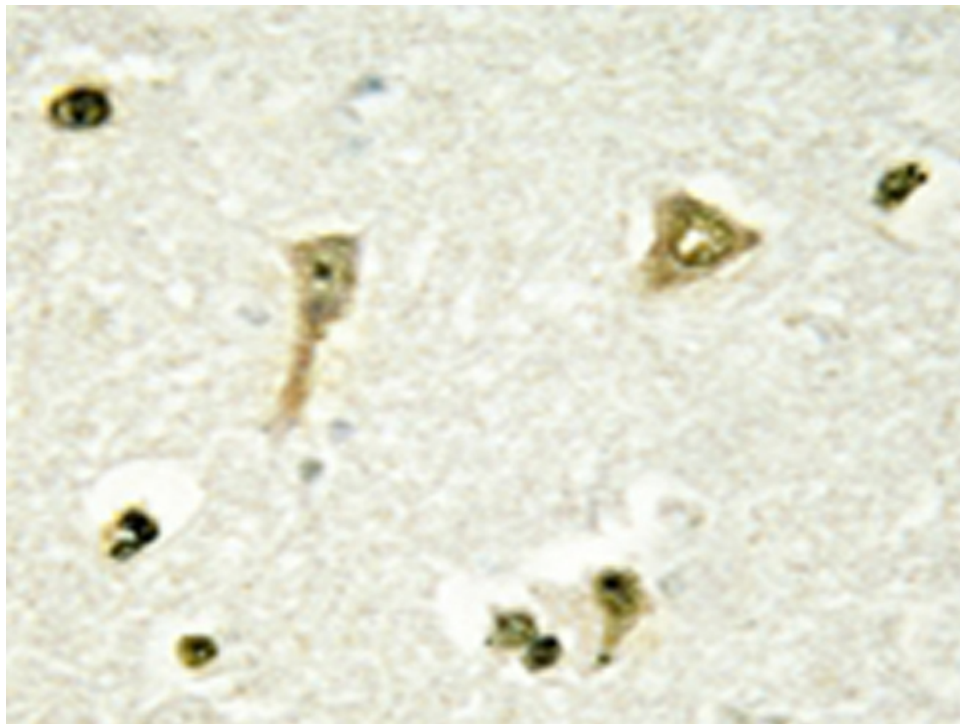
技术规格

Background:

This gene encodes a member of the TSC22 domain family of leucine zipper transcription factors. The encoded protein is stimulated by transforming growth factor beta, and regulates the transcription of multiple genes including C-type natriuretic peptide. The encoded protein may play a critical role in tumor suppression through the induction of cancer cell apoptosis, and a single nucleotide polymorphism in the promoter of this gene has been associated with diabetic nephropathy. Alternatively spliced transcript variants encoding multiple isoforms have been observed for this gene.

Applications:	WB, IHC, IF
Name of antibody:	TSC22D1
Immunogen:	Synthesized peptide derived from internal of human TSC2 2D1.
Full name:	TSC22 domain family, member 1
Synonyms :	Ptg-2; TSC22; TGFB1I4
SwissProt:	Q15714
IHC positive control:	Human brain tissue
IHC Recommend dilution:	50-100
WB Predicted band size:	110 kDa
WB Positive control:	Mouse liver tissue and Rat liver tissue lysates
WB Recommended dilution:	500-3000
IF positive control:	HepG2 cells
IF Recommend dilution:	100-500





mlbio 梅联生物
Good elisakit producers