

## 兔抗 TUBD1 多克隆抗体

中文名称：兔抗 TUBD1 多克隆抗体

英文名称： Anti-TUBD1 rabbit polyclonal antibody

别名： tubulin delta 1; TUBD

相关类别： 一抗

储存： 冷冻（-20℃）

宿主： Rabbit

抗原： TUBD1

反应种属： Human, Mouse

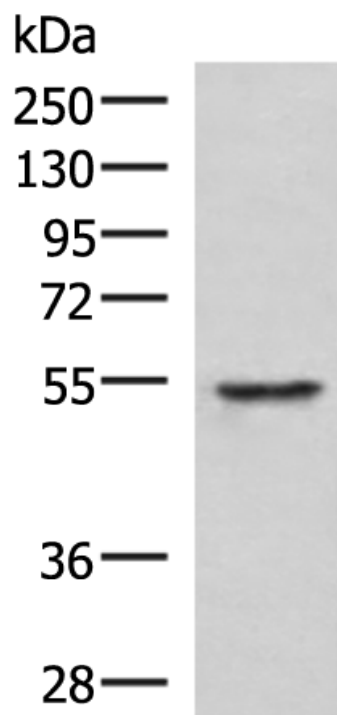
标记物： Unconjugate

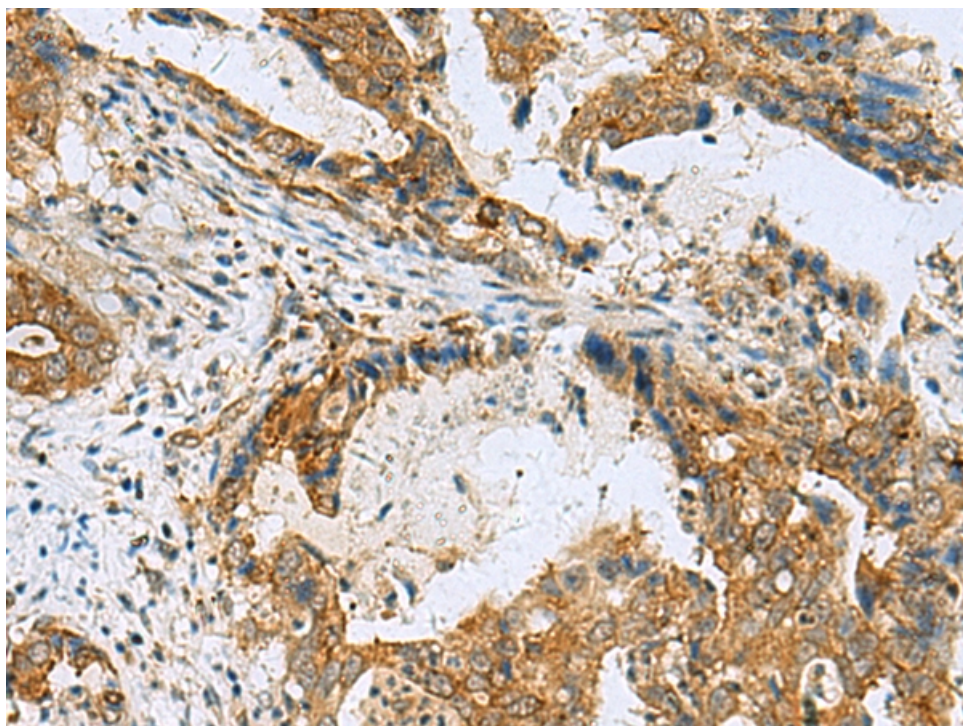
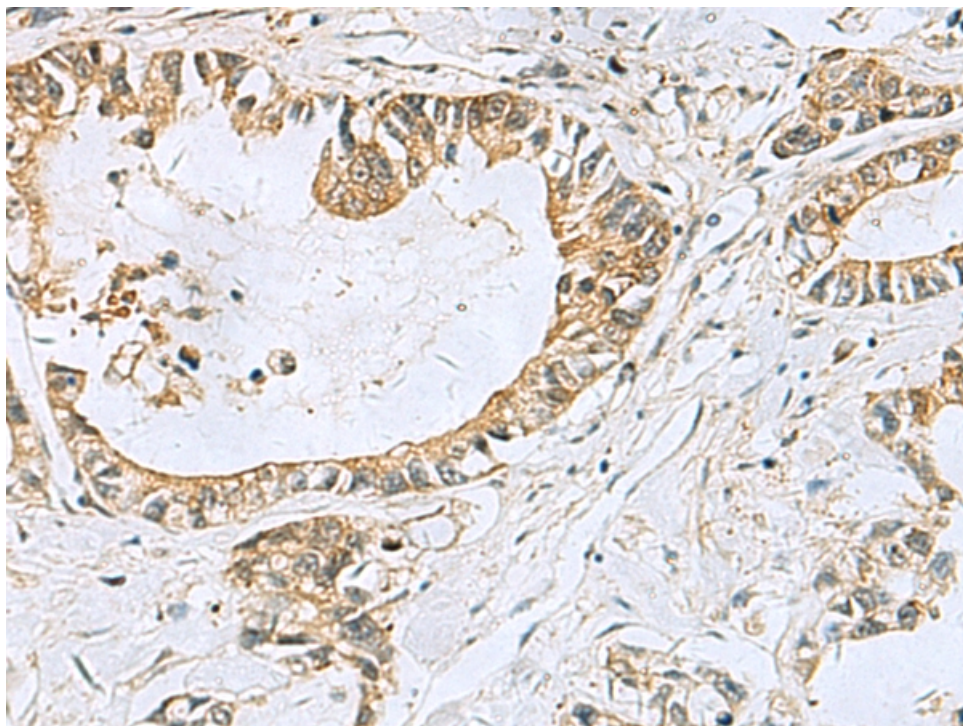
克隆类型： rabbit polyclonal

### 技术规格

<b>Background:</b>	In the elongating spermatid it is associated with the manchette, a specialized microtubule system present during reshaping of the sperm head.
<b>Applications:</b>	ELISA, WB, IHC
<b>Name of antibody:</b>	TUBD1
<b>Immunogen:</b>	Fusion protein of human TUBD1
<b>Full name:</b>	tubulin delta 1
<b>Synonyms:</b>	TUBD
<b>SwissProt:</b>	Q9UJT1
<b>ELISA Recommended dilution:</b>	5000-10000
<b>IHC positive control:</b>	Human cervical cancer and Human gastric cancer

<b>IHC Recommend dilution:</b>	50-300
<b>WB Predicted band size:</b>	51 kDa
<b>WB Positive control:</b>	Jurkat cell lysate
<b>WB Recommended dilution:</b>	1000-5000





**mlbio** 梅联生物  
Good elisakit producers