

## 兔抗 TXLNA 多克隆抗体

中文名称：兔抗 TXLNA 多克隆抗体

英文名称： Anti-TXLNA rabbit polyclonal antibody

别名： IL14; TXLN

相关类别： 一抗

抗原： TXLNA

储存： 冷冻（-20℃）

宿主： Rabbit

反应种属： Human, Mouse

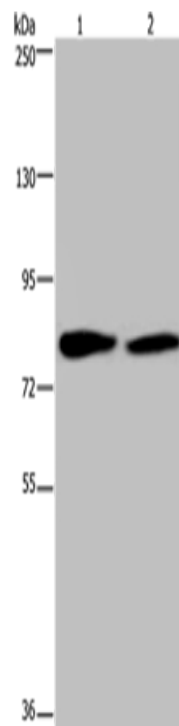
标记物： Unconjugate

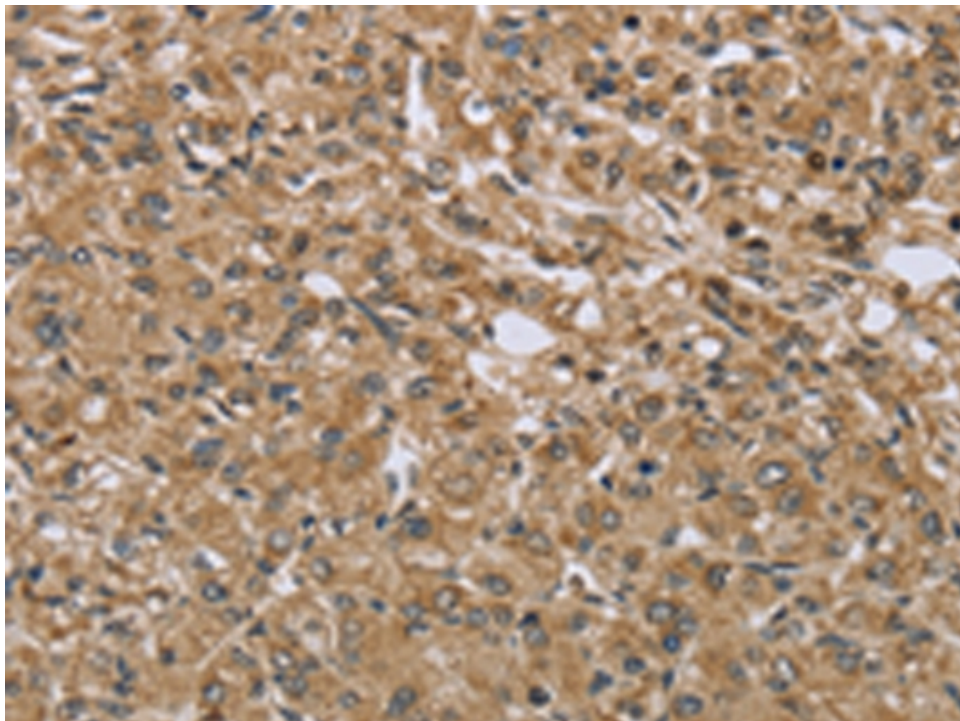
克隆类型： rabbit polyclonal

### 技术规格

|                          |  |
|--------------------------|--|
| <b>Background:</b>       | $\alpha$ -taxilin is a novel binding partner of the syntaxin family which is implicated in intracellular vesicle trafficking. Through its C-terminal coiled-coil region, $\alpha$ -taxilin interacts with the nascent polypeptide-associated complex (NAC), which acts as a transcriptional coactivator. |
| <b>Applications:</b>     | ELISA, WB, IHC   |
| <b>Name of antibody:</b> | TXLNA  |
| <b>Immunogen:</b>        | Fusion protein of human TXLNA  |
| <b>Full name:</b>        | taxilin alpha  |
| <b>Synonyms :</b>        | IL14; TXLN   |
| <b>SwissProt:</b>        | P40222   |

|                                    |                       |
|------------------------------------|-----------------------|
| <b>ELISA Recommended dilution:</b> | 2000-5000             |
| <b>IHC positive control:</b>       | Human prostate cancer |
| <b>IHC Recommend dilution:</b>     | 25-100                |
| <b>WB Predicted band size:</b>     | 62 kDa                |
| <b>WB Positive control:</b>        | K562 and 293T cells   |
| <b>WB Recommended dilution:</b>    | 500-2000              |





说