

兔抗 RERG 多克隆抗体

中文名称：兔抗 RERG 多克隆抗体

英文名称：Anti-RERG rabbit polyclonal antibody

相关类别：一抗

储 存：冷冻 (-20℃)

宿 主：Rabbit

抗 原：RERG

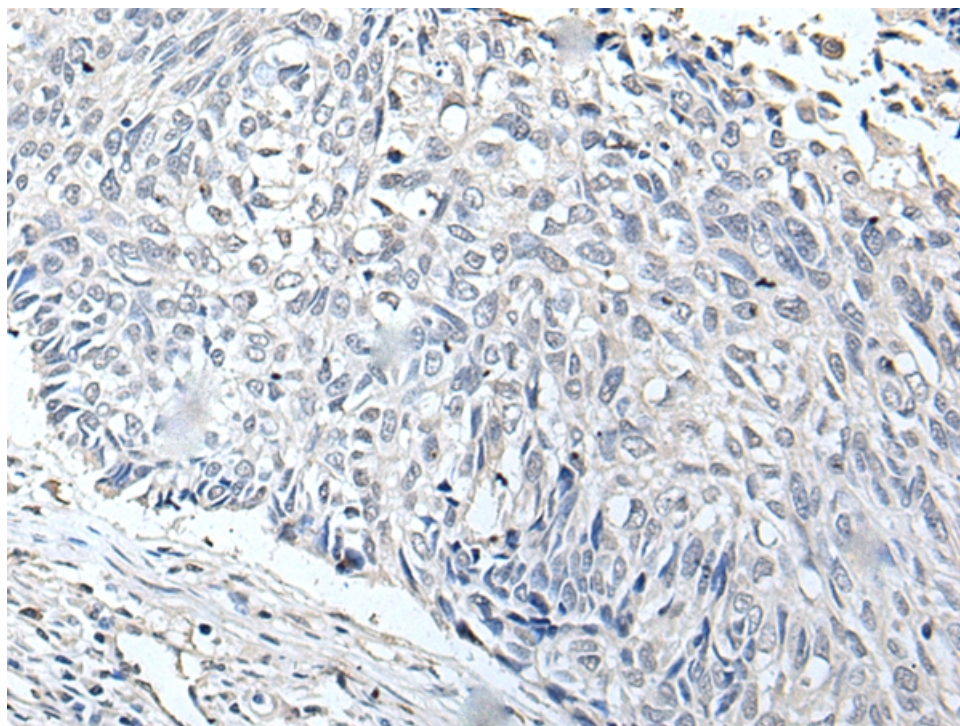
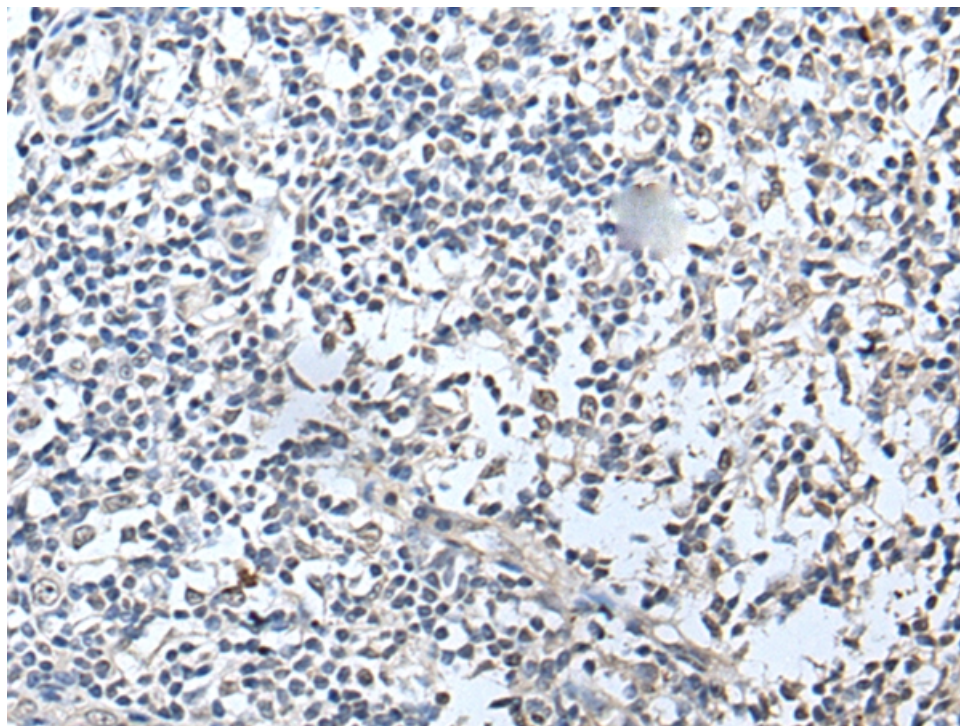
反应种属：Human, Mouse

标 记 物：Unconjugate

克隆类型：rabbit polyclonal

技术规格

Background:	RERG, a member of the RAS superfamily of GTPases , inhibits cell proliferation and tumor formation (Finlin et al., 2001 [PubMed 11533059]).
Applications:	ELISA, IHC
Name of antibody:	RERG
Immunogen:	Full length fusion protein
Full name:	RAS-like, estrogen-regulated, growth inhibitor
SwissProt:	Q96A58
ELISA Recommended dilution:	5000-10000
IHC positive control:	Human tonsil
IHC Recommend dilution:	30-150



mlbio 梅联生物
Good elisakit producers